

THE MOUNTAINS TO SOUND GREENWAY TRUST
MINUTES OF THE ANNUAL MEETING OF THE BOARD OF DIRECTORS
November 9, 2022

TIME AND PLACE

Pursuant to timely notice, the Meeting of the Board of Directors of the Mountains to Sound Greenway Trust was held on November 9, 2022, beginning at 6:30pm for dinner and 7:15 for the meeting at the Jim Ellis Preston Community Center. Attendees had the option to join virtually as well.

PRESENT

Present were 35 voting Directors and 3 non -voting Directors whose names are indicated on the attached Record of Board Attendance (Attachment 1). Several guests were also present (Attachment 1).

Vice President/President Elect Josh Lipsky served as Chair of the meeting and Sharon Linton as Secretary. A copy of the Agenda for this meeting is attached to these minutes (Attachment 2).

PRELIMINARY ITEMS

Welcome

Josh Lipsky welcomed everyone to the meeting, introduced new board members and invited introductions around the room and from the Zoom room.

ACTION ITEMS

Action was taken on the following matters:

Approval of the Board Minutes. Minutes of the September 21, 2022 Board Meeting were reviewed. A motion was made by Sharon Linton and seconded by Andrew Kenefick. The board voted to approve the September 21, 2022 minutes.

BOARD MEETING BUSINESS

1. Conflict of Interest, Board Pledge Forms. Josh Lipsky reminded board members to submit these forms annually. They can be found mtsgreenway.org/boardmember.

3. Fundraising Committee Report. Mike Woodsum thanked key donors, and corporate donors including several Board Members, for their support at this critical time. He gave a reminder to RSVP for the upcoming Annual Dinner & Celebration, taking place at the Seattle Convention Center on November 30, 2022. Mike also shared the date of the Spring Fundraising Breakfast, which will take place on Saturday, May 20, 2023 at Lake Sammamish State Park – an outdoor event similar to the 2022 Breakfast.

ANNOUNCEMENTS AND UPDATES

- Jon Hoekstra introduced staff who have recently joined the Greenway Trust, shared current hiring news including currently posted and upcoming positions to be posted, and shared a photo of staff member, Mackenzie Dolstad's twins, who stopped by the tree planting event in Greenway Onesies.

- The Greenway recently collaborated with the Snoqualmie tribe on a social media post about the Snoqualmie Tribe Ancestral Lands Movement.
- During Native American Heritage Month (November) there are many local events and exhibits to experience including the Burke Museum, Seattle Art Museum, Stonington Gallery, Henry Art Gallery, and Vashon Center for the Arts. More details were in a recent Seattle Times article.
- National Public Lands Day in the Teanaway was a success with great volunteer participation.
- A delegation of forestry officials from the country of Georgia visited the Mt. Baker-Snoqualmie National Forest which included presentations and activities related to USFS partnerships with the Greenway Trust.
- More than 100 volunteers participated in the Annual Tree Planting Celebration at Lake Sammamish State Park and planted nearly 1000 trees along Issaquah Creek.
- Dan Hintz was recently interviewed in part of an NPR report on urban forest carbon credits relating to the Ballinger Open Space project. The program aired nationally on All Things Considered on October 4, 2022. Listen at www.npr.org/2022/10/04/1126806846/two-groups-want-to-put-focus-on-carbon-credits-from-urban-forests

PRESENTATIONS

Diversity Moment: DEI Definitions. Board member Cora Johnson introduced definitions of the terms Diversity, Equity, and Inclusion in an effort for the organization to come together on language we'd like to adopt as an organization. Selecting a common language helps give us a shared vocabulary to use around the topic and allows us to start conversations, to find our common ground, and focus on what we all want to achieve. Board members participated in table discussions about the draft definitions and what specific words resonate with us.

Inclusion is the act of creating an environment in which any individual or group can feel a sense of belonging and that they are respected, supported, and valued.

Equity is the guarantee of fair treatment, access, and opportunity for all; including Greenway Trust staff, board members, volunteers, and participants, while at the same time striving to identify and eliminate barriers that have prevented the full participation of marginalized groups.

Diversity refers to the variety of personal experiences, values, and perspectives that arise from differences of culture and circumstance. Some of the human differences include race, ethnicity, gender, age, religion, language, abilities/disabilities, sexual orientation, socioeconomic state, and geographic region, and more. We endeavor to empower people from all walks of life to enjoy and benefit from our shared natural environment.

State Budget Requests Laurie Benson of WA Department of Natural Resources and Peter Herzog of WA State Parks and Recreation presented legislative priorities for each agency and how we can support these efforts.

Wildlife Restoration in the North Cascades. Jason Ransom, a researcher for the National Park Service, gave a presentation about the Wildlife Program in North Cascades National Park. He discussed the program's ecosystem scale, conservation methods, science-based decision making, adaptive management efforts, and coexistence focus. The current restoration focus of the Wildlife Program is on fisher and grizzly bear populations in the Cascade Mountains. Full text of reports shared by Jason are available at <https://www.researchgate.net/profile/Jason-Ransom>.

CONCLUDING REMARKS AND ADJOURNMENT

Josh shared closing remarks, provided a reminder about upcoming events, and noted Board Meeting dates for the upcoming fiscal year.

FY23 BOARD MEETING CALENDAR

Wednesday, February 8, 2023, 7:00-8:30 by Zoom (virtual only)

Wednesday, April 26, 2023, 6:00-8:30PM, Swauk-Teaway Grange, Cle Elum

Wednesday, June 7, 6:30-9:00PM, Jim Ellis Memorial Preston Community Center

RSVP! ANNUAL DINNER AND CELEBRATION:

Wednesday, November 1, 6PM, Seattle Convention Center

SAVE THE DATE! SPRING FUNDRAISING BREAKFAST:

Saturday, May 20, 2023, Lake Sammamish State Park

The meeting was adjourned at 9:00pm.



Sharon Linton, Secretary

DIRECTORS SIGN IN
Mountains to Sound Greenway Trust Board Meeting 11-09-2022

First Name	Last Name	Ex-Officio Director	Initials	First Name	Last Name	Ex-Officio Director	Initials
Kristin	Bail	X		Yvonne	Kraus		
Cathy	Baker			Ken	Krivanec		
Jim	Becker			Daniel	Levine		
Laurie	Benson	X	LB	Sharon	Linton		SL
Gary	Berndt			Joshua	Lipsky		JML
Mark	Boyar			Elizabeth	Lunney		
Jason	Broenneke		JB	Robert	Manelski		
Allison	Capen		AMC	Ben	Mayer		
Susan	Carlson			Douglas	McClelland		DM
Bill	Chapman			Roberta	McFarland		
Dow	Constantine	X		Roger	Millar	X	
Kathleen	Craig			Chad	Nesland		
Deloa	Dalby			Thomas	O'Keefe		
Diana	Dupuis	X		Amanda	O'Rourke		
Bob	Ellis	✓	TBE	Kizz	Prusia		
Karl	Forsgaard	X	KFF	Marie	Quasius		
Kurt	Fraese			Charlie	Raines		CR
Hilary	Franz	X		Janet	Ray		
Lindsay	Frickle			Jim	Reinhardsen		
Jen	Gradisher		TO	Vikram	Sahney		VA
Matthew	Grimm			Kate	Schaefer		
Jon	Hoekstra			Meredith	Shank		MS
Laura	Hoffman			Jill	Simmons		
Katherine	Hollis			Al	Smith		
Mitsu	Iwasaki	X		David	Sturtevant		
Warren	Jimenez	X		Harry	Thomas		HAT
Cora	Johnson	X	CLJ	Christopher	Thomas		OT
Andrew	Kenefick	X	AMC	Leah	Tivoli		
Melanie	Kitzan		MKK	Adam	Torem		
Janet	Knox			Alison	Washburn		
Ken	Konigsmark			Jody	Weil	X	



Mountains to Sound Greenway Trust
 Meeting of the Board of Directors
 November 9, 2022

Advisors & Guests SIGN-IN

Name	Advisor or Guest?
Sarah Beards	Guest (for Warren Jimenez)
Jim Freiburg	Guest
LARRY PHILLIPS	
Mits was	
JASON RANSOM	GUEST
Kate Fancher	Staff
Sornesarwanh Phungvanin	Staff
Rachel Lodge	guest
Travis Klaes	Advisor
Andrew Ellis	Guest
Todd Trepanier	
PETER HERZOG	GUEST
Trevor Kostanich	Advisor
Kathleen Hollis	Advisor
Susan Carlson	

Mountains to Sound Greenway Trust Board Meeting November 9, 2022 Attendance

First Name	Last Name	Primary Affiliation	Director, Advisor, Guest, Staff?	Ex-Officio	Attendance Notes
Kristin	Bail	USFS Okanogan-Wenatchee National Forest	Director	x	VIRTUAL
Jim	Becker	Retired, SmartLab Toys	Director		VIRTUAL
Laurie	Benson	WA State Department of Natural Resources	Director		
Gary	Berndt	WA State Department of Natural Resources	Director		VIRTUAL
Mark	Boyar	Middle Fork Outdoor Recreation Coalition	Director		VIRTUAL
Jason	Broenneke	Matthew G. Norton Co.	Director		
Allison	Capen	International Living Future Institute	Director		
Susan	Carlson	University of Washington Bothell	Director		
William	Chapman	Mountains to Sound Greenway Trust	Director		VIRTUAL
Kitty	Craig	The Wilderness Society	Director		VIRTUAL
Diana	Dupuis	WA State Parks & Recreation Commission	Director	x	VIRTUAL
Bob	Ellis	Lifetime Educator & Cyclist	Director		
Karl	Forsgaard	Thomson Reuters	Director		
Kurt	Fraese	Fraese and Associates, LLC	Director		VIRTUAL
Lindsay	Frickle	Leukemia and Lymphoma Society	Director		VIRTUAL
Jen	Gradisher	Washington Trails Association	Director		
Jon	Hoekstra	Mountains to Sound Greenway Trust	Director		
Katherine	Hollis	Eastrail Partners	Director		
Mitsu	Iwasaki	The Trust for Public Land	Director		
Cora	Johnson	GeoEngineers, Inc.	Director		
Andrew	Kenefick	Retired, Waste Management of Washington	Director		
Melanie	Kitzan	Chinook Therapeutics	Director		
Janet	Knox	Pacific Groundwater Group	Director		VIRTUAL
Sharon	Linton	SL Connects	Director		
Josh	Lipsky	Cascadia Law Group PLLC	Director		
Robert	Manelski	The Boeing Company	Director		VIRTUAL
Doug	McClelland	Mountains to Sound Greenway Trust	Director		
Roger	Millar	WSDOT	Director	x	
Marie	Quasius	Port of Seattle	Director		VIRTUAL
Charlie	Raines	Sierra Club, Washington State Chapter	Director		
Janet	Ray	Retired, AAA Washington	Director		VIRTUAL
Vikram	Sahney	The Mountaineers	Director		
Katherine	Schaefer	The Boeing Company	Director		VIRTUAL
Meredith	Shank	Social Venture Partners	Director		
Chris	Thomas	Divert, Inc.	Director		
Harry	Thomas	AAA Washington	Director		
Adam	Torem		Director		VIRTUAL
Alison	Washburn	REI Co-op Bellevue	Director		VIRTUAL
Jennifer	Brenes	King County Search and Rescue	Advisor		VIRTUAL
Travis	Klaas	Mott McDonald	Advisor		
Trevor	Kostanich	Relevant Planning & Development, LLC	Advisor		
Larry	Phillips	Retired, King County Council	Advisor		
Matt	Shaw	DroneSeed	Advisor		VIRTUAL
Ian	Sutton	Seyfarth Shaw LLP	Advisor		VIRTUAL
Todd	Trepanier	WSDOT	Advisor		
Kathryn	Williams	Retired, HomeStreet Bank	Advisor		VIRTUAL
Sarah	Brandt	King County Dept. of Natural Resources and Parks	Guest		
Andrew	Ellis		Guest		
Jim	Freeburg		Guest		
Peter	Herzog	Washington State Parks & Recreation Commission	Guest		
Rachel	Lodge		Guest		
David	Peterson	Retired, WSDOT	Guest		VIRTUAL
Jason	Ransom	National Park Service	Guest		
Tor	Bell	Mountains to Sound Greenway Trust	Staff		
Amy	Brockhaus	Mountains to Sound Greenway Trust	Staff		
Kate	Fancher	Mountains to Sound Greenway Trust	Staff		
Robyn	Hall	Mountains to Sound Greenway Trust	Staff		
Stephanie	Huck	Mountains to Sound Greenway Trust	Staff		
Becca	Kedenburg	Mountains to Sound Greenway Trust	Staff		VIRTUAL
Nicky	Pasi	Mountains to Sound Greenway Trust	Staff		
Sornesarwanh	Phongwarinr	Mountains to Sound Greenway Trust	Staff		
Michael	Sanchez	Mountains to Sound Greenway Trust	Staff		VIRTUAL
Caroline	Villanova	Mountains to Sound Greenway Trust	Staff		
Mike	Woodsum	Mountains to Sound Greenway Trust	Staff		
Voting Directors					35
Non-Voting Directors					3
Advisors & Guests					15
Staff					11
Total Attendance					64



Mountains to Sound Greenway Trust Mission:

The Mountains to Sound Greenway Trust leads and inspires action to conserve and enhance the landscape of the Mountains to Sound Greenway NHA, ensuring a long-term balance between people and nature.

**Mountains to Sound Greenway Trust
Board of Directors Meeting**

November 9, 2022, Jim Ellis Preston Community Center, 6:30-9:00PM
Zoom option available 7:15-9:00PM

Chair: Alison Washburn

- | | | |
|------|---|--------|
| I. | Welcome | 7:15pm |
| II. | Board of Directors business | 7:30pm |
| | Approval of Minutes – (VOTE) Sharon Linton, Alison Washburn | |
| | Conflict of Interest disclosure, Board Pledge forms reminder – Alison Washburn | |
| | Fundraising Committee Report – Mike Woodsum | |
| III. | Announcements and updates – Jon Hoekstra | 7:45pm |
| | <ul style="list-style-type: none">○ Staff and Hiring Updates○ Snoqualmie Tribe social media○ Native American Heritage Month: Indigenous Art Exhibits in the Seattle Times○ National Public Lands Day in the Teanaway – Nicky Pasi, Vince Pruis○ Delegation from Georgia visiting Mt. Baker-Snoqualmie National Forest – Amy Brockhaus○ Tree Planting Celebration at Lake Sammamish State Park –Jon Hoekstra○ Dan Hintz on NPR | |
| IV. | Diversity Moment – DEI definitions – Cora Johnson | 8:00pm |
| V. | State Budget Requests | 8:15pm |
| | Laurie Benson, WA Dept of Natural Resources
Pete Herzog, WA State Parks and Recreation
Brock Milliern, WA Recreation and Conservation Office | |
| VI. | Wildlife Restoration in the North Cascades – Jason Ransom, National Park Service | 8:35pm |
| VII. | Closing – Alison Washburn | 8:55pm |

GREENWAY TRUST BOARD ENGAGEMENT

What will YOU do in the Mountains to Sound Greenway NHA today?

FY23 BOARD MEETING CALENDAR

Wednesday, February 8, 2023, 7:00-8:30pm by Zoom

Wednesday, April 26, 2023, 6:00-8:30pm, Swauk-Teaway Grange, Cle Elum

Wednesday, June 7, 6:30-9:00pm, Jim Ellis Memorial Preston Community Center

RSVP! ANNUAL DINNER AND CELEBRATION:

Wednesday, November 30, 6:00PM, Seattle Convention Center

mtsgreenway.org/annualdinner

SAVE THE DATE! SPRING FUNDRAISING BREAKFAST:

Saturday, May 20, 2023, Lake Sammamish State Park

Board member calendar, policies, information: mtsgreenway.org/boardmember

Visit this Board Resources page for organizational policies, board member information, and past presentations.

Engagement and Educational Opportunities

Greenway Volunteer Events | mtsgreenway.org/volunteer

- November 12, North Bend Arbor Day

Snoqualmie Tribe Ancestral Lands Movement

snoqualmietribe.us/snoqualmie-tribe-ancestral-lands-movement/

Dan Hintz and the Ballinger Open Space project were featured nationally on NPR's *All Things Considered*.
npr.org/2022/10/04/1126806846/two-groups-want-to-put-focus-on-carbon-credits-from-urban-forests

Native American Heritage Month

Visit the Burke Museum, Seattle Art Museum, Stonington Gallery, Henry Art Gallery, or Vashon Center for the Arts to honor and celebrate the art born from the rich heritage and history of Indigenous peoples:

seattletimes.com/entertainment/visual-arts/5-exhibitions-to-see-during-native-american-heritage-month



HILARY S. FRANZ
COMMISSIONER OF PUBLIC LANDS

DNR's mission is to manage, sustain, and protect the health and productivity of Washington's lands and waters to meet the needs of present and future generations

CONTACT

Brian Considine
Legislative Director
Cell: 360-764-0013
brian.considine@dnr.wa.gov

Olgy Diaz
Deputy Legislative Director
Cell: 360-918-3555
olgy.diaz@dnr.wa.gov

www.dnr.wa.gov

*All dollar amounts are estimated and details are subject to change.

Department of Natural Resources 2023 Decision Package Summary

GOOD GOVERNANCE AND STEWARDSHIP

1. Trust Land Transfer Revitalization (GF-S \$568k / Cap \$25.1M)

Funding and legislation to transform the Trust Land Transfer (TLT) program based on a report and recommendations by a DNR and external stakeholder TLT work group. Funding and program changes will reduce barriers to DNR's land transaction process, fund the conservation of TLT parcels, and grow the trust land portfolio so that we can best benefit the environment and the state's trust assets. The capital request contains ten (10) ranked properties covering 7,065 acres of land across the state.

2. Derelict Aquatic Structures Removal (GF-S \$1.14M / Cap \$20M)

Funding and legislation to remove and restore derelict aquatic structures to protect our waterways and improve fish habitat. Program will work with Tribes, local governments, and nonprofits to address and remove derelict structures from state and privately-owned aquatic lands. Leverages funding to utilize the Puget Sound Nearshore Credits Program to offset impacts to critical nearshore habitats. Establishes a "nearshore bond" pilot or similar mechanism to bring private capital for removal or improvements to nearshore structures.

3. Protect Public Lands and Tribal Rights (GF-S \$7.8M)

Funding to hire ten (10) law enforcement officers to allow DNR to better protect our public lands and cultural resources. DNR has twelve officers covering 5.6 million acres of DNR-managed lands - equivalent of two agency officers covering an area the size of Rhode Island. Also, provides additional resources to help the agency develop a sustainable recreation plan, establishes a first foods pilot program with Tribes, and provides on-going data collection tools that are used to assess impacts of visitation to our public lands.

4. Community Forest Management - Teanaway and Klickitat (GF-S \$2.84M)

Funding to meet the maintenance and operation needs for these important community treasures. DNR can fully implement the management plans for both community forests ensuring healthy forests that reduce fire threats and provide critical forest and aquatic habitats for local fish, including salmon. Funding also allows for sustainable recreation and economic opportunities for the local communities.

5. Natural Area Preserve Act turns 50! (GF-S \$3.35M)

Funding to celebrate the importance of the Natural Areas Preserve Act (NAPA) and allow DNR to better identify, protect, and manage important natural area ecosystems for the next fifty years. DNR will create a statewide map of Essential Conservation Areas (ECAs). We will also determine suitability for conservation acquisition; map areas of high forest conversion risk throughout Washington; increase Natural Areas Program land management capacity; and improve forest health within natural areas.



HILARY S. FRANZ
COMMISSIONER OF PUBLIC LANDS

CONTACT

Brian Considine

Legislative Director
Cell: 360-764-0013
brian.considine@dnr.wa.gov

Olgy Diaz

Deputy Legislative Director
Cell: 360-918-3555
olgy.diaz@dnr.wa.gov

www.dnr.wa.gov

*All dollar amounts are estimated and details are subject to change.

CLIMATE RESILIENT COMMUNITIES

1. Urban Forestry (GF-S \$8M)

Funding for additional community grants that provide necessary assistance for increasing our statewide urban tree canopy. We will also develop a statewide Tree Equity Map, update work on model tree ordinances, conduct a tree canopy analysis, and utilize youth corps conservation crews to plant trees in communities where they will provide the greatest benefit.

2. DNR Webster Nursery Expansion (Cap \$7.4M)

Funding to construct a new seed plant, and to plan and design new greenhouses and outdoor grow pads to construct in the 25-27 biennium. Investments will expand seed collection capacity by 50%, and increase seedling production by 50%, both of which are crucial to meet reforestation demands. We must grow more trees if we are to plant more trees.

3. Watershed Resilience Action Plan (WRAP) (GF-S \$2.86M)

Funding needed to meet Snohomish watershed WRAP deliverables, including kelp and eelgrass stewardship; a large woody debris program; aquatic restoration grants; culvert removal; and begin planning for pilot projects in three additional target watersheds for systems-level efforts to benefit salmon recovery.

4. Reforestation Mapping and Planning (GF-S \$2M)

Funding supports work in partnership with USFS to restore 25 USFS seed orchard sites that are needed to improve state seed supply; a reforestation needs assessment, including spatial analysis to map opportunity areas across the state; and a reforestation pipeline assessment to identify opportunities and barriers to meeting reforestation strategy goals, including workforce development needs.

5. Avoided Conversion Rapid Response Fund (Cap \$12M)

Funding to establish a Rapid Response Fund that would be used to acquire key working forest lands at risk of permanent conversion, and to keep those areas in working forest status—rather than being lost permanently. Washington State is losing forestland at an unprecedented rate and is less than 50% forested for the first time in our history, and the State is on track to lose an additional 625k acres by 2040. This mechanism allows the agency to act quickly to acquire critical forest parcels put on the market and purchase these parcels before we lose these forests to conversion.

6. Net Zero Facilities and Fleet (GF-S \$10M)

Climate Commitment Act (CCA) funding to ensure the agency can meet CCA its emission-reduction goals by 2030. The agency will bring on much-needed capacity and expertise to expand the agency's fleet charging infrastructure and procure and deploy EV trucks to determine suitability for program work. We will also conduct energy efficiency assessments for agency buildings and commercial properties to establish a facilities plan that will reduce emissions across all our properties.

7. Climate Resilience Task Force (GF-S \$6.8M)

Funding to implement Governor's recommendation for DNR and Ecology to co-lead climate resilience work across state government. Task force will provide coordinated and strategic efforts to align all levels of state government with Washington's Climate Resilience work, look to update the State Climate Resilience Plan (2012), and build resilience resources for state and local governments.



HILARY S. FRANZ
COMMISSIONER OF PUBLIC LANDS

ENVIRONMENTAL JUSTICE

1. HEAL Act and Environmental Justice Investments (GF-S \$3M)

Funding to create the Office of Equity and Environmental Justice within the agency in order to centralize the agency's environmental justice (EJ) vision, and create capacity across all divisions while becoming the public facing program for DNR's EJ and Equity work. Establishes necessary staffing that will allow the agency to meet legislative and public HEAL Act expectations and improve the workforce's ability to conduct Environmental Justice activities.

2. Growing Roots for Next 7 Generations (GF-S \$2.4M)

Funding to expand the agency's Tribal Affairs Department to address growing government-to-government needs for all Tribes in the state across all agency programs, including requirements under the recently passed HEAL and Climate Commitment Acts. Tribal Affairs expansion will allow us to better serve our Tribal partners and tribal communities across the state.

WORKFORCE AND ECONOMIC DEVELOPMENT

1. Workforce Housing Opportunities on DNR Lands (GF-S \$2.7M)

Funding for a workforce housing analysis that will assess opportunities for development of workforce housing on administrative lands for DNR employees, and on state trust commercial and transitional lands that are already identified for high/medium density housing. Agency will bring on additional expertise to better address workforce housing needs in our FY 25 facilities plan and assist communities by identifying housing opportunities on agency commercial properties located throughout the state.

2. Natural Resources Workforce Development (GF-S \$6.26M)

Funding for the agency's workforce "Root to Canopy Framework" that implements targeted investments in critical Natural Resources and Forest Health education and training-to-career workforce pathways as identified in HB 1168. DNR will provide targeted funding and assistance for forestry-centered educational and training programs across the state with emphasis on family-wage, high-demand career opportunities throughout Washington as called for in HB 1168.

Investments in K-12 Education; will better tell the forest sector story and modernize recruitment strategies by exposing our K-12 students to state's incredible natural resources. Pre-Apprenticeship Programs; Natural Resources and Climate Corps; Corrections Post-Release Career Development; Apprenticeship and Career & Technical Training will expand natural resources and forest health practices and management training opportunities. Also delivers Wildland Fire training to Tribes utilizing DNR fire academy programming.

Lastly, allows the agency to conduct a workforce employer and needs assessment; and deliver a Natural Resources workforce public awareness campaign with matching private funding so we can better promote the Natural Resources educational and workforce opportunities across the state.

CONTACT

Brian Considine

Legislative Director
Cell: 360-764-0013
brian.considine@dnr.wa.gov

Olgy Diaz

Deputy Legislative Director
Cell: 360-918-3555
olgy.diaz@dnr.wa.gov

www.dnr.wa.gov

*All dollar amounts are estimated and details are subject to change.



Operating Budget Requests

Contact

Brock Milliern
 Policy and Legislative Director
 Office: 360-902-3021
 Cell: 360-789-4563
 E-mail: brock.milliern@rco.wa.gov

Recreation and Conservation Office

PO Box 40917
 Olympia WA 98504-0917
 Telephone: (360) 902-3000
 Hearing Impaired: Call 711
 E-mail: info@rco.wa.gov
 Web: <https://rco.wa.gov/>

Budget Requests

- \$5.5 million
- Three staff
- Biennial amount
- Ongoing
- Leverages \$732,000 in other funding

Results Washington Tie-Ins

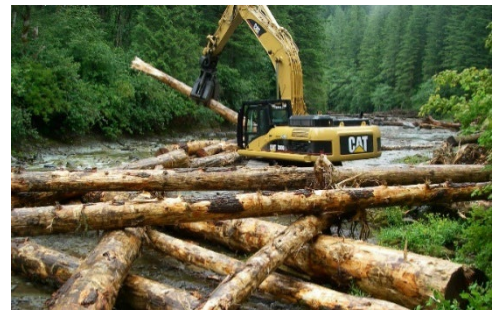
- Prosperous economy
- Sustainable Energy and clean environment
- Healthy and safe communities
- Efficient, effective, and accountable government

Investing in Washington's Great Outdoors

The Recreation and Conservation Office (RCO) distributes funding to governments agencies and nonprofits to create outdoor recreation spaces and conserve the state's natural heritage and working lands. The agency also coordinates the State's efforts on salmon and orca recovery and invasive species. RCO's requests for the 2023-2025 operating budget are below.

Support Salmon Recovery Organizations (Request: \$4,472,000)

Increase capacity for 26 salmon recovery lead entities and 5 regional organizations. Continue funding a new Spokane lead entity.



The Legislature created salmon recovery regions and lead entities in 1999 to write and implement recovery plans for salmon. Fundamental to salmon recovery in Washington, these organizations develop projects, gain community support, ensure projects are scientifically valid, and update federally approved recovery plans. While the complexity of this work has increased, funding for staff and other administration has not. Lead entities have not had a cost-of-living increase since 1999 and five of the eight regions have not received an increase in the past 13 years. If funding levels remain the same, these organizations likely will need to reduce services at a time when there is more federal funding for projects, which will push salmon recovery further behind. This request also includes permanent funding for the Spokane lead entity, which the 2022 Legislature funded until 2024 but not beyond.

Provide for Recreation and Public Lands Data Management (Request: \$372,000)

Fund one employee to manage critical recreation and public lands data and fund a contract for data collection.

RCO collects data from government agencies, nonprofits, and businesses to develop statewide funding strategies for recreation and wildlife conservation. Data includes inventories of trails, recreation lands, and wildlife conservation lands. For each report, RCO must hire private data services, which occurred no less than seven times in the past biennium, and pay for support services, which have cost more than \$170,000 so far. The data is often proprietary and the full information cannot be made public. This person, and associated contract, would ensure the data is maintained and made publicly available.

Provide a Tribal Liaison (Request: \$312,000)

Fund one employee to work directly with tribes on recreation, conservation, salmon and orca recovery, and invasive species issues.

RCO provides grants for projects that affect tribes and tribal treaty rights, such as salmon and orca recovery, recreation, and conservation. RCO also coordinates salmon recovery and invasive species efforts. To coordinate authentically with tribes, an additional employee is needed. A 2022 equity review of RCO grant programs recommended RCO add a tribal liaison to improve communication and equitable distribution of resources and protect tribal interests. Specifically, this person will connect tribes to grant opportunities; help improve grant programs to achieve more tribal participation; ensure tribes are included in the creation of programs, problem solving opportunities, and other opportunities; and create a direct and single point of contact for tribes when issues or opportunities arise.



Provide a Diversity, Equity, and Inclusion Coordinator (Request: \$312,000)

Fund a person to implement diversity-, equity-, and inclusivity-related recommendations and to better serve under-resourced communities.

RCO is the largest state funder of parks, trails, and farmland and wildlife habitat conservation. These grants can transform communities, create healthier residents, and improve the social and academic performance of children. The power of these grants makes it imperative that they are distributed equitably across the state. An equity coordinator will focus on the following three areas: 1) implement recommendations from a legislatively funded review of RCO grant programs to ensure funding and green space access to all communities in some grant programs; 2) help under-served communities that have not applied for RCO grants; 3) help RCO make improvements internally as recommended by an internal equity audit.



Share the Costs to Control Flowering Rush (Request: \$50,000)

Contribute Washington's share of a flowering rush program.

Flowering rush is an invasive plant that clogs irrigation pipes and dams, harbors predators of salmon, destroys habitat, and limits recreation.

Congress has allotted \$4 million for a cost-share program in Washington and three other western states. RCO has administered Washington's share of this program since 2019. The program contracts with tribes, counties, public utility districts, and others to do the work. This budget request would allow the work to continue and will leverage more than \$732,000 in local and federal funds for flowering rush removal in six counties and three tribal nations.



Photograph courtesy of the Washington State Noxious Weed Control Board



Dollars in Thousands

ABS024 Recommendation Summary
State Parks and Recreation Comm
2023-25 Regular Budget Session
PARKS25 - 2023-25 Parks Agency Budget Request

	Average Annual FTEs	General Fund State	Other Funds	Total Funds
CB T0PL Current Biennium Base	832.4	62,808	168,960	231,768
2021-23 Current Biennium Total	832.4	62,808	168,960	231,768
Total Carry Forward Level	832.1	62,737	159,899	222,636
Percent Change from Current Biennium	.0%	(.1)%	(5.4)%	(3.9)%
Maintenance – Other Changes				
ML 8L Lease Adjustments	0.0	20	0	20
ML 9S Equipment Replacement Costs	0.0	4,500	0	4,500
ML 9V Capital Project Operating Costs	2.5	260	142	402
ML CC Credit Card Transaction Costs	0.0	0	600	600
ML RE Recreation Land Maintenance	36.1	7,500	0	7,500
ML RF Reservation Fees	0.0	574	144	718
Maintenance – Other Total	38.6	12,854	886	13,740
Total Maintenance Level	870.7	75,591	160,785	236,376
Percent Change from Current Biennium	4.6%	20.4%	(4.8)%	2.0%
Policy – Other Changes				
PL CP Capital Program Operational Support	11.2	1,198	3,595	4,793
PL CR Cultural Resource Management	3.3	255	760	1,015
PL CS Increase Customer Service	43.1	8,533	1,799	10,332
PL DE Support DEI at Parks	10.7	3,027	0	3,027
PL FH Forest Health Treatments	0.0	0	1,000	1,000
PL HR Employee Engagement and Retention	3.4	0	928	928
PL MM Internal Comms and Public Outreach	2.2	0	563	563
PL MP Miller Peninsula Park Plan	0.0	600	0	600
PL RM Records Management	2.2	0	469	469
PL RP Climate Resilient Parks	1.1	1,433	0	1,433
PL SL Manage State Land Recreation Impact	2.2	1,442	0	1,442
PL TS Inclusive Trail System	2.1	1,314	0	1,314
PL VP Virtual Private Network Costs	0.0	48	0	48
Policy – Other Total	81.5	17,850	9,114	26,964
Subtotal - Policy Level Changes	81.5	17,850	9,114	26,964
2023-25 Total Policy Level	952.2	93,441	169,899	263,340
Percent Change from Current Biennium	14.4%	48.8%	.6%	13.6%

ABS024 Recommendation Summary
State Parks and Recreation Comm
PARKS25 - 2023-25 Parks Agency Budget Request
Dollars in Thousands

ML 8L Lease Adjustments

State Parks leases facilities for its eastern region maintenance shop. An additional \$20,000 is needed in the 2023-25 biennium to pay for an ongoing lease increase that is effective January 1, 2023. (General Fund-State)

ML 9S Equipment Replacement Costs

State Parks has a significant backlog of vehicles and equipment that exceed the useful life schedule. The range of items include law enforcement vehicles, maintenance vehicles, major equipment used by arbor crews, and vessels used by staff at marine parks. This request for ongoing funding would enable Parks to replace a significant number of vehicles and equipment that exceed their service life and move the agency to an increasingly sustainable replacement schedule. Timely replacement of worn vehicles and equipment increases efficient operations, reduces maintenance costs, and allows for a quicker transition to electric vehicles and equipment when feasible. (General Fund- State)

ML 9V Capital Project Operating Costs

State Parks is regularly completing capital projects which often increases operating costs. These increases include staffing for custodial and grounds maintenance of new park facilities, furnishings and utilities costs for newly constructed buildings and interpretation for newly developed interpretation centers. At times, completed capital projects generate new revenue. Funding this request will enable Parks to properly operate and maintain park facilities, which leads to increased customer satisfaction with their park experience. (General Fund-State / Parks Renewal and Stewardship Account)

ML CC Credit Card Transaction Costs

State Parks is requesting a \$600,000 increase in spending authority to pay for escalating credit card processing costs. Growth in Discover Pass sales, camping, roofed accommodations and online sales are driving a greater volume of credit card transactions and a corresponding increase in transaction fees and the level of activity currently seen is expected to continue into future biennia. (Parks Renewal and Stewardship Account)

ML RE Recreation Land Maintenance

Due to the increased visitation and use in parks, there is more wear and tear on facilities and grounds. State Parks is experiencing a backlog in maintenance and requests ongoing funding for additional resources and staff capacity to address needs within region offices, marine crews, central shops, and at parks. This request would provide funding to hire trail-specific maintenance crews to complement existing volunteer trail efforts allowing for many improvements of trail maintenance that are beyond the volunteer's role. Achieve stewardship, landscape management, forest health and park facility enhancements through hiring Washington Conservation Corps crews and a coordinator. In addition, a maintenance coordinator position would help review, develop, and execute a workforce development plan. (General Fund-State)

ML RF Reservation Fees

State Parks provides passes granting free camping to qualified disabled veterans, in accordance with a legislatively mandated requirement (RCW 79A.05.065). Pass holders of this program are exempt from paying transaction fees to reserve their campsite, although Parks is responsible to pay these transaction charges to the reservation system vendor, along with miscellaneous cancelation fee costs. Since the 2017-19 biennium transaction fees have roughly doubled of which roughly 80% are driven by disabled veterans pass program. Parks is requesting \$718,000 in additional ongoing funding and spending authority to cover the increased transaction fee costs. (General Fund-State / Parks Renewal and Stewardship Account)

ABS024 Recommendation Summary
State Parks and Recreation Comm
PARKS25 - 2023-25 Parks Agency Budget Request

Dollars in Thousands

PL CP Capital Program Operational Support

The number of capital projects State Parks is submitting in the capital biennial requests has increased substantially in the last ten years. This increase is driven by a combination of public demand and current assets requiring major maintenance or rebuilding. Ensuring adequate scope, schedule and budget in a request is critical for a capital project to be successful. Since the Great Recession, Parks has struggled to identify operating funding that would enable the capital planning team to expand as the workload demands have increased. The current team of roughly 10 FTEs is close to the number of FTEs in 2012 though in recent years the number of projects is roughly three times the number a decade ago driving down the amount of time Parks has to properly plan a capital request which results in delays once a project is funded and pre-design commences. Parks is requesting funding for additional staff and technical support for increased scoping and scheduling and determining an accurate budget. (General Fund-State / Parks Renewal and Stewardship Account)

PL CR Cultural Resource Management

State Parks cares for a vast and diverse array of cultural resources (archaeological sites, landscapes, historic properties, and artifacts) that require protection and management under a variety of federal and state regulations. By number, Parks manages significantly more archaeological sites and historic properties than any other state agency. Additional staff capacity is requested to manage, and monitor known cultural resource sites, perform needed evaluations and recommendations for historic properties, manage historic preservation capital projects, and support Native American Grave Protection and Repatriation Act (NAGPRA) compliance and collections management. Additional funds are requested for cultural resource surveys. (General Fund-State)

PL CS Increase Customer Service

Visitation increases, in large part a byproduct of the recent pandemic, has led to continued overcrowding in State Parks. FY20 visitations was 37.6 million with FY21 spiking at 43.8 million and by FY25 projected to be 41.3 million. This increased visitation could result in poor customer experiences and unsafe environments at a number of park locations. Staffing levels and funding requested in this package would protect natural resources, provide increased enforcement, manage parking areas, increase levels of customer service in areas such as interpretation, control overcrowding in parking lots and on trails, and provide for safer park conditions. (General Fund-State / Parks Renewal and Stewardship Account)

PL DE Support DEI at Parks

State Parks requests funding to increase resources and staff capacity to evolve Diversity, Equity, and Inclusion (DEI) policies and practices within the agency. These resources would support implementation of a distributed, agency-wide system of training and community engagement to advance DEI principles within the agency's workforce and create a welcoming parks system that is accessible to all. Hiring dedicated staff would support more strategic engagement with diverse communities through volunteer, interpretive and educational programs, grants opportunities and improving existing relationships with friends' groups and local non-profits; and increase capacity to engage with underserved communities including community-based organizations, schools, social services, and new non-profits. (General Fund-State)

PL FH Forest Health Treatments

State Parks forest health projects involving commercial timber removal are now structured as separate harvest and log sale contracts. In the past most timber harvesting and selling was done by a single vendor which resulted in a net marginal expenditure or revenue. The shift of contracting with harvesters while also working with a separate purchaser of the timber requires a higher spending authority and a corresponding increase in earned revenue. Parks Natural Resource Management policy requires proceeds from the sale of natural resources (timber) to be reinvested in stewardship and associated interpretive activities. (Parks Renewal and Stewardship Account)

ABS024 Recommendation Summary
State Parks and Recreation Comm
PARKS25 - 2023-25 Parks Agency Budget Request

Dollars in Thousands

PL HR Employee Engagement and Retention

Significant world events over the last two years have dramatically impacted worker priorities for work/life balance and more supportive work environments, creating greater expectations of the workplace and employers. State Parks needs to better meet these expectations to attract, fully engage, and retain quality employees. Higher vacancy rates and turnover result in an inability to meet the agency mission. Additional programs and multi-discipline approaches are required, primarily developed and managed by Human Resources to address these changing expectations. (Parks Renewal and Stewardship Account)

PL MM Internal Comms and Public Outreach

State Parks needs to implement communication strategies to address the growing expectations of current employees, potential employees, visitors, and stakeholders. For Parks to achieve this goal, the communications team needs to grow to manage an expanded internal communications plan and develop refined targeted multimedia products. The goal is to create a robust communication strategy that provides user-centered, accessible information to a more diverse audience. (Parks Renewal and Stewardship Account)

PL MP Miller Peninsula Park Plan

State Parks has initiated efforts to develop the next full-service park located on the Miller Peninsula in Clallam County. Initial capital funded predesign work and public engagement has identified concerns among the nearby residents regarding potential impacts of developing the Miller Peninsula property into a full-service destination park location. Public concerns include impacts to the land, resources, surrounding communities and increased traffic in the region. Parks is requesting \$600,000 for a Master Plan and an Environmental Impact Statement (EIS). Both the Master Plan and EIS will identify potential impacts to the property, resources, ecological functions, surrounding communities and traffic. (General Fund-State)

PL RM Records Management

State Parks has seen in recent years a significant increase of public record requests that are of greater complexity and scope. The current two full-time staff handling public records requests are increasingly challenged to respond timely and completely which is increasing Parks legal and financial exposure. Two additional full-time staff, for a total of four, would significantly increase Park ability to meet deliverable deadlines and do so with greater assurance of completeness which in turn reduces potential litigation and financial exposure. The additional resources would also allow for improved training of agency staff and overall records management. (Parks Renewal and Stewardship Account)

PL RP Climate Resilient Parks

State Parks requests additional resources to fund comprehensive agency greenhouse gas inventory; assess park electrical infrastructure updates needed to support electric vehicle charging; identify appropriate high potential park sites for renewable energy installation projects; and assess infrastructure, cultural sites, and natural resources vulnerable to climate change. Request includes a full-time sustainability specialist to standardize and maintain interdisciplinary coordination of data collection and statutorily mandated reporting of greenhouse gas emissions. Related to Puget Sound Action Agenda Implementation. (General Fund-State)

PL SL Manage State Land Recreation Impact

ABS024 Recommendation Summary
State Parks and Recreation Comm
PARKS25 - 2023-25 Parks Agency Budget Request
Dollars in Thousands

State Parks must make increasingly informed visitor management decisions and increase sustainability of natural resources. Staff and resources are needed to inventory, manage and analyze data on how outdoor recreation, climate change, and other factors impact natural resources. Ecological Integrity Assessment (EIA) is a widely used tool for measuring ecosystem health, but additional customization is needed to monitor human-caused impacts and environmental stressors. Funding would allow EIA tool customization, in coordination with Department of Fish & Wildlife and Department of Natural Resources and improve habitat conservation and transparency of land management decisions across state lands. Related to Puget Sound Action Agenda Implementation. (General Fund-State)

PL TS Inclusive Trail System

State Parks requests funding for additional resources and staff capacity with a focus on inclusive and welcoming trail experiences for all park visitors, applying “Diversity, Equity & Inclusion” (DEI) principles to re-envision park trail experiences. Contracted resources would be used to collect data annually for approximately 200 miles of in-park trails and be used to provide updated terrain, surfacing, and slope information to the public, including those with disabilities, before exploring park trails. This request includes staff funding for trail planning and creating maps with accessibility and general trail information for all park visitors. (General Fund-State)

PL VP Virtual Private Network Costs

State Parks requests \$48,000 of ongoing funding to pay monthly WaTech access fees for 7 new VPN locations Parks will be adding to the network during 2021-23. VPNs at park locations enable Parks staff to have secure access to data, information, state and agency systems. Including these seven new set-ups, Parks will have a total 102 park locations with VPNs by the end of the 2021-23 biennium. (General Fund-State)