

SINGLE COPY PRICE
\$1.00



Proudly serving these Upper County communities with unsurpassed focus: Cle Elum, Roslyn, Ronald, Easton, South Cle Elum, Snoqualmie Pass, Suncadia, Thorp and surrounding rural areas



NORTHERN KITTITAS COUNTY

TRIBUNE

www.NKCTribune.com

YOUR 3-DAY FORECAST
Full Weather Report on page A2

THURSDAY
HI 67°/LO 41°

FRIDAY
HI 61°/LO 42°

SATURDAY
HI 51°/LO 36°



← NEIGHBORS IN THE NEWS THIS WEEK (see inside) →



Greenway garners coveted federal designation: 'National Heritage Area'

KITTITAS COUNTY – On Tuesday, March 12, after the *NKC Tribune* went to press, the Mountains to Sound Greenway Trust announced Congress had designated the Greenway – the 28 cities and 1.5 million acres sandwiching I-90 between Seattle and Ellensburg – as a *National Heritage Area* (NHA). It took eight years for this to happen.

Needless to say, Greenway officials, volunteers and stakeholders are ecstatic about this milestone. The designation provides national recognition of the Greenway and is expected to promote regional tourism and attract new economic activities.

Annually, NHAs can apply for grant dollars allocated by the federal government. Those dollars represent a revenue stream that potentially could be leveraged with matching dollars into millions of dollars over time.

Expressing his sentiments, Greenway Executive Director **Jon Hoekstra** wrote, "Our local pride and joy is now officially a national treasure.

"The Mountains to Sound Greenway NHA

proudly joins 54 others in 32 states, including iconic and historic landscapes such as New York's Niagara Falls, Mississippi's Gulf Coast, and North Carolina's Blue Ridge. NHAs are places designated by Congress where historic, cultural, and natural resources combine to form cohesive, nationally important landscapes.

"We celebrate all that the NHA designation will bring the Greenway. As our communities undergo massive growth, this designation gifts us new opportunities to more effectively conserve natural resources, protect our cultural heritage, and contribute to the economic vitality of the region."

So what is an National Heritage Area?

They are community-driven, lived-in landscapes fueled by public-private partnerships supporting natural resource conservation, historic preservation, recreation, heritage tourism and educational projects.

Before the Greenway received the designation,

it was already involved those types of projects, starting in 1991 when the Mountains to Sound Greenway Trust was born. Visit mtsgreenway.org to view its 2017-18 annual report, where you'll learn that in just a single year the Greenway planted 28,917 native trees and shrubs, restored 374 acres, completed maintenance on 72 miles of trails, reported \$1 million in recreation improvements, recruited 4,559 volunteers, involved 3,406 students in Greenway education programs, and that doesn't speak of the organization's successes over the entire 28 years it's been around.

With the new designation the Greenway will be able to expand the range and scope of their good work. How?

The NHA Program is administered by the National Park Service through coordinators based in Washington, D.C., and six regional offices: Anchorage, San Francisco, Denver, Omaha, Philadelphia and Atlanta.

See **NATIONAL HERITAGE AREA...**, page A5

Governor signs bill moving Washington's Presidential Primary date to March

OLYMPIA – Last week Governor Jay Inslee signed SB5273, to move Washington's

mary ballot.

The vote was 28-21, with only one Democrat. Sen. Tim

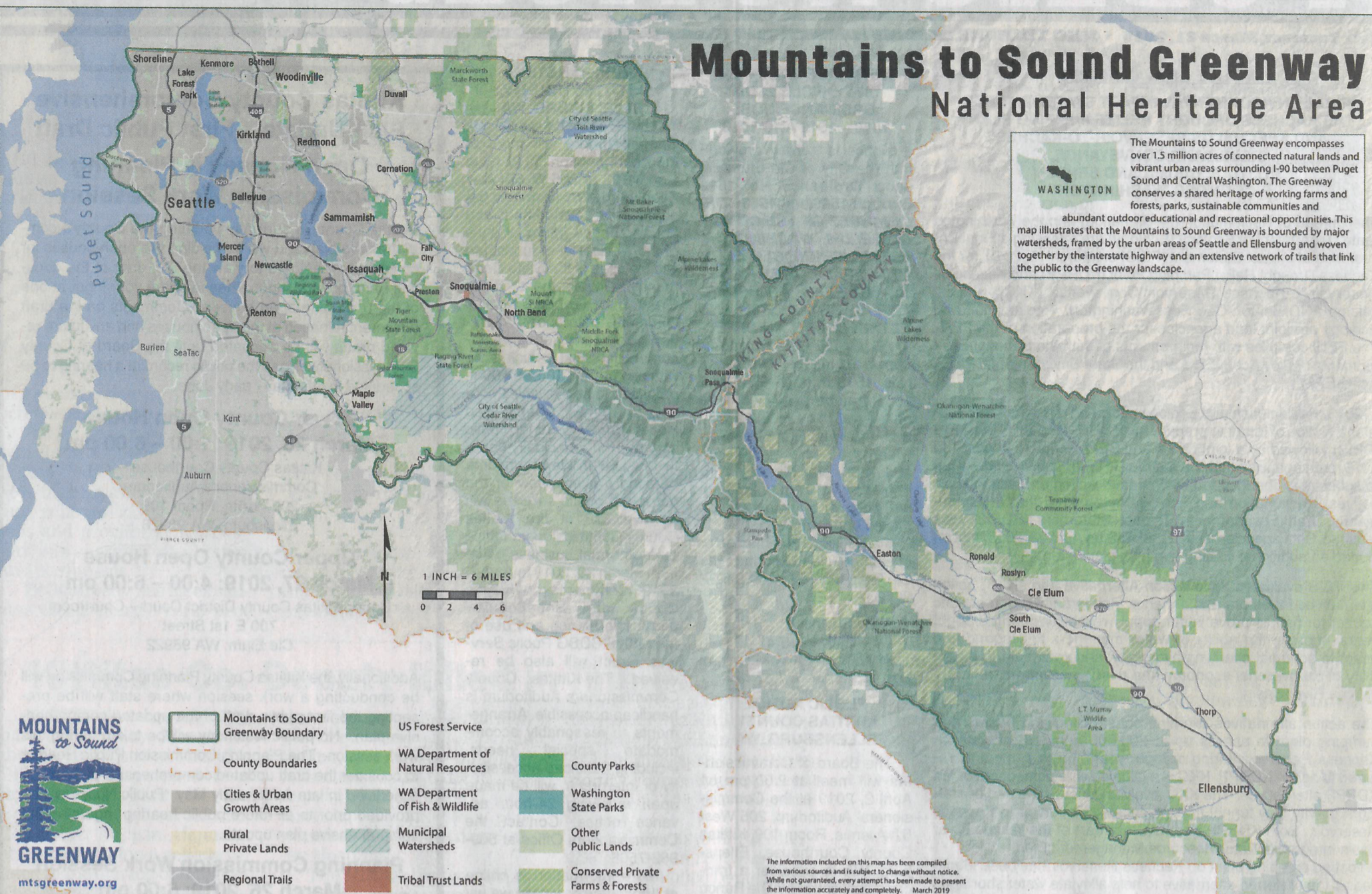
ing any taxpayer information whatsoever, except to authorized agencies and individuals.

Four reasons why you should attend the April 2 meeting

REGIONAL NEWS

Mountains to Sound Greenway National Heritage Area

The Mountains to Sound Greenway encompasses over 1.5 million acres of connected natural lands and vibrant urban areas surrounding I-90 between Puget Sound and Central Washington. The Greenway conserves a shared heritage of working farms and forests, parks, sustainable communities and abundant outdoor educational and recreational opportunities. This map illustrates that the Mountains to Sound Greenway is bounded by major watersheds, framed by the urban areas of Seattle and Ellensburg and woven together by the interstate highway and an extensive network of trails that link the public to the Greenway landscape.



- Mountains to Sound Greenway Boundary
- County Boundaries
- Cities & Urban Growth Areas
- Rural Private Lands
- Regional Trails
- US Forest Service
- WA Department of Natural Resources
- WA Department of Fish & Wildlife
- Municipal Watersheds
- Tribal Trust Lands
- County Parks
- Washington State Parks
- Other Public Lands
- Conserved Private Farms & Forests

The information included on this map has been compiled from various sources and is subject to change without notice. While not guaranteed, every attempt has been made to present the information accurately and completely. March 2019

YOU'RE LOOKING AT the boundary line for the Mountains to Sound Greenway, recently designated the 55th National Heritage Area in 32 states. Visit mtsgreenway.org and explore the interactive map you'll find there.

Map courtesy of Mountains to Sound Greenway

NATIONAL HERITAGE AREA...

CONTINUED FROM PAGE A1

Coordinators do not take ownership of public or private lands inside National Heritage Areas, nor do they impose land use controls or affect private property rights, tribal treaty rights, water rights, or hunting and fishing activities.

Coordinators do provide technical assistance and other services, while the National Park Service provides NHAs with matching federal funds through the coordinators.

National Heritage Areas are authorized to receive up to \$1 million every year, though on average appropriations are between \$150,000 and \$750,000 annually. That's good news for the communities and public lands

now a part of the Mountains to Sound Greenway NHA.

Said Nicky Pasi, the Greenway Trust's Upper Yakima Community Coordinator, "NHAs can leverage about \$5.50 in matching funds for every \$1 granted by NHA Program coordinators."

Pasi said over the next several months Greenway Trust staff would be reaching out to other NHAs to learn more about their best practices in building truly representative community partnerships.

In the meantime, anyone with questions can e-mail her: nicky.pasi@mtsgreenway.org.

Lawmakers weigh in
In 2013 U.S. Representatives

Dave Reichert and Adam Smith, and Senators Maria Cantwell and Patty Murray introduced the Greenway NHA legislation. Others involved included U.S. Representatives Suzan DelBene, Pramila Jayapal, and Kim Schrier.

Cantwell said, "Washington's recreation economy generates \$26 billion in annual spending and supports more than 200,000 direct jobs. Continuing to protect our most scenic and historic landscapes, like the Mountains to Sound Greenway, will help boost tourism and preserve our natural landscape for future generations."

Former Representative Reichert echoed Cantwell, "The Mountains to Sound Greenway is a national treasure. With its vibrant mix of small towns, working farms, lush forests and rugged mountains, it's a great representation of the diverse geography of our region. Preserving this balance for our region's future is at the heart of this bill that I originally introduced in 2013 with Congressman Smith."

Rise and shine into the fog



THESE DAYS OF contrasting night and day temps have created some unusual sunrises in Cle Elum like this early morning photo taken on Second Street.

N.K.C. TRIBUNE/
Jim Fossett photo

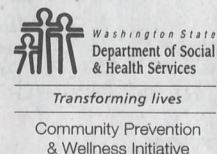


Parents are the #1 reason young people decide not to drink.

Start the Conversation

TIP!

You can reduce underage drinking by talking about the risks early and often with your child.



For more information, go to starttalkingnow.org or <https://www.co.kittitas.wa.us/health/programs/cpc.aspx>

COPD? Emphysema? Chronic Bronchitis? Asthma?

BOOK YOUR VACATION NOW

**FROM \$1,749*
\$1,499***

FREE ONBOARD CREDIT

GRAND ALASKAN CRUISE & TOUR

**FROM \$1,849*
\$1,599***

NATIONAL PARKS OF THE GOLDEN WEST