

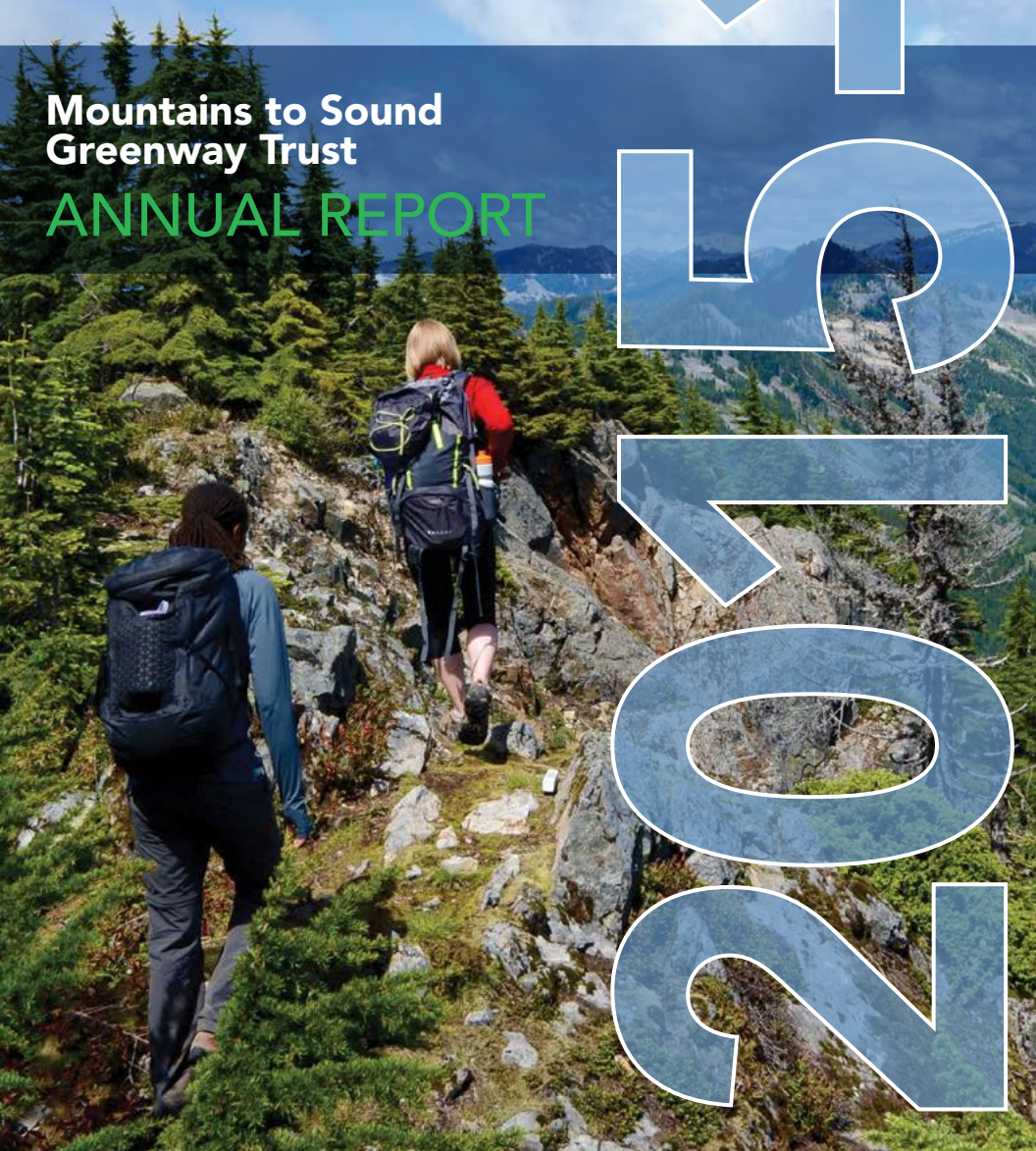


JULY 1, 2015 - JUNE 30, 2016

**Mountains to Sound
Greenway Trust**

ANNUAL REPORT

2015



letter from the president

Twenty-five years of collaboration and hard work has helped sustain and nurture the Mountains to Sound Greenway. Our region's relationship with the inspiring landscape that surrounds us would be far different if not for the devoted, passionate, and visionary community members, businesses, government agencies, and donors who have joined together in the belief that when we have meaningful connections with our natural surroundings, our lives are better.

The next 25 years will continue to be shaped by our region's growth. The rest of the nation looks to the Pacific Northwest for creative solutions in how to balance human endeavor with environmental stewardship. We welcome new neighbors while making sure we don't lose our open spaces and trails to death.

To meet these challenges and opportunities, the Greenway Trust developed a new strategic plan that commits us to conserving the landscape, making connections with our communities, and engaging more people as stewards of the Greenway. The strategic plan lays out a vision and path forward to assure the spirit and value of the relationship between the Greenway landscape and its inhabitants is felt by all for generations to come. Please join us and learn more at mtsgreenway.org.



Mountains to Sound Greenway Trust

We believe that when we are connected with nature, our lives are better.

We are healthier and happier, and our communities are stronger, more equitable, and more economically competitive. Enhancing people's connections to nature drives our mission.



mission The Mountains to Sound Greenway Trust leads and inspires action to conserve and enhance the landscape from Seattle across the Cascade Mountains to Central Washington, ensuring a long-term balance between people and nature.

vision An iconic 1.5 million-acre landscape that conserves a healthy and sustainable relationship between land and people by balancing built and natural environments. A landscape providing places for nature and wildlife, for outdoor recreation and education, for working forests and local agricultural production, while embracing vibrant urban areas with strong economies. A landscape supported by a broad cross-section of society, working together as an effective coalition to preserve this heritage for future generations.

185 ACRES



in RESTORATION

NEW PUBLIC LANDS
added to the Greenway

+581

ACRES

landscape

32,865

NATIVE TREES
AND SHRUBS
planted



connections

68 MILES

TRAIL work
completed



Nearly

\$1M

RECREATION
IMPROVEMENTS



people

5,686

PEOPLE
VOLUNTEERED



45%
YOUTH

1,205

National Heritage Area
ENDORSEMENTS secured



3,862

STUDENTS participated
in the education program

national heritage area designation



When we are connected with nature, our lives are better. The Mountains to Sound Greenway offers world-class recreation and spectacular open spaces on the doorstep of our urban areas. This high quality of life makes us healthier and happier, and helps attract tourism and top employers that keep our economy strong. Designation of the Greenway National Heritage Area would recognize these strengths and allow the Greenway to serve as a national model for collaborative conservation.

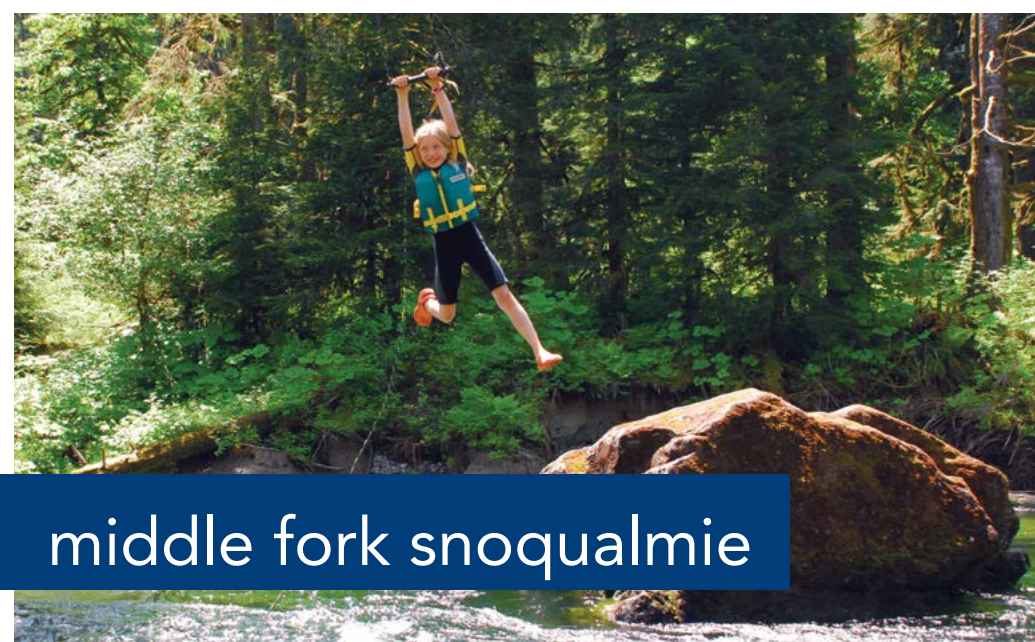
Campaign progress. Bipartisan legislation to establish the Greenway National Heritage Area was introduced in 2015 by Senators Cantwell and Murray and Congressmen Reichert and Smith, followed by a favorable hearing in the Senate Committee on Energy and Natural Resources. We are working with our congressional delegation to pass Greenway legislation by the end of this Congress in December.

Broad-based support. In addition to support in Congress, designation has been endorsed by over 6,500 businesses, governments, non-profits, and individuals, including Governor Jay Inslee, King County Executive Dow Constantine, the Kittitas County Commissioners, Microsoft, Expedia, REI, the Trust for Public Land, and the Mountaineers.

For latest updates about the campaign, visit GreenwayHeritage.org



MAKING THE GREENWAY OFFICIAL



middle fork snoqualmie

Launching the Middle Fork Coalition. How do we make sure we don't love the Middle Fork to death? A major improvement to the access road will soon allow easy, family-friendly access to the Valley for the first time. We've convened a broad-based coalition of stakeholders to develop a common vision of a Middle Fork Valley that can accommodate rising usage and preserve the same wilderness escape for many generations to come. Our coalition is addressing issues such as safety, transit, recreation access, visitor experience, and new models of public-private cooperation.



Private-public partnerships. When the Middle Fork Trail was heavily damaged by storms in the mid-2000s, the US Forest Service could not afford the repairs on its own because of declining budgets. So, we rallied both private and public partners, including REI, Washington Trails Association, and National Forest Foundation, to raise the needed funds. Repairs will be completed by 2017.



Improving recreation access. Our crews and volunteers dug into several new trail projects, including construction of the Granite Creek Trail and major repairs to the Middle Fork and Mailbox Peak trails. We also helped line up a future family-friendly Oxbow Loop, and a new bridge at Pratt Bar to be completed next year.



upper yakima basin

Nurturing collaboration. Change is in the air in the Upper Yakima Basin. New opportunities for recreation and land management are surfacing, alongside ongoing challenges, like fire safety and reduced funding. In response, we started the Kittitas Caucus, a forum for local citizens, businesses, and government partners to set common goals and collaborate on projects. Two of the first projects focus on recreation, including a connected trail network and increased river access.



Local community rallies to repair trails. Volunteers from the Suncadia community have partnered with us since 2012 to maintain trails in the eastern half of the Greenway. This year, the group focused on Lake Easton State Park and on the Little Joe Lake Trail in the Okanogan-Wenatchee National Forest.



Securing resources to halt weeds. Creativity and persistence are key Greenway traits. We recently leveraged not only money but work forces to control the spread of weeds on the newly acquired Central Cascades Forest, just east of Snoqualmie Pass. We secured funding from the National Fish & Wildlife Foundation and hired Kittitas County Noxious Weed Control Board to complete the work, all on land owned and managed by our nonprofit partner The Nature Conservancy.



INVESTING NOW
IN RECREATION FOR THE FUTURE



GROWING A COALITION
FOR RECREATION & COMMUNITY

urban & edge communities



Strengthening outdoor learning experiences. Each year we take thousands of students into the Greenway for field-based learning. This year we piloted a new science journal in our 'Next Generation Stewards' program. The journal models scientists' data collection process and strengthens students' comprehension by recording and reflecting on their observations.



Restoration of Issaquah Creek. When we began restoring Issaquah Creek in the mid-1990s, we knew that only a holistic approach—coordinated with state, county, city, and private owners along the creek—would be successful. Building upon nearly two decades of success, this year we began new restoration efforts at Confluence Park, partnered with 150 private land owners to restore their creek-side land, and started work on the last remaining unrestored parcel along Issaquah Creek in Lake Sammamish State Park.



Filling an important regional trail gap. The City of Bellevue is designing part of a 3.6-mile trail that will connect the Mountains to Sound Trail through Eastgate to Issaquah. Construction funding was a key project on the Greenway legislative agenda, resulting in state funding for part of the first phase. Design for the trail includes an innovative tunnel and bridge crossings near the I-90/I-405 interchange.



snoqualmie river valley

Building a connected local economy. More than one hundred community, government, and business leaders participated in 'A River Runs Through It,' an eight-part workshop series led by the Greenway Trust, to take the first steps towards a unified valley and a regional identity that highlights outdoor recreation, farms and food, heritage, and art.



Farming the future. Farms are one of our region's best classrooms. Two local Snoqualmie Valley schools, working with the Greenway Trust, piloted a new, on-the-ground educational program called 'Farming the Future,' where students spend one Friday a month at a local farm engaged in hands-on science learning that incorporates local ecology and sustainable agriculture. In addition to working at a local farm, students have been able to apply their new knowledge in their own school gardens.



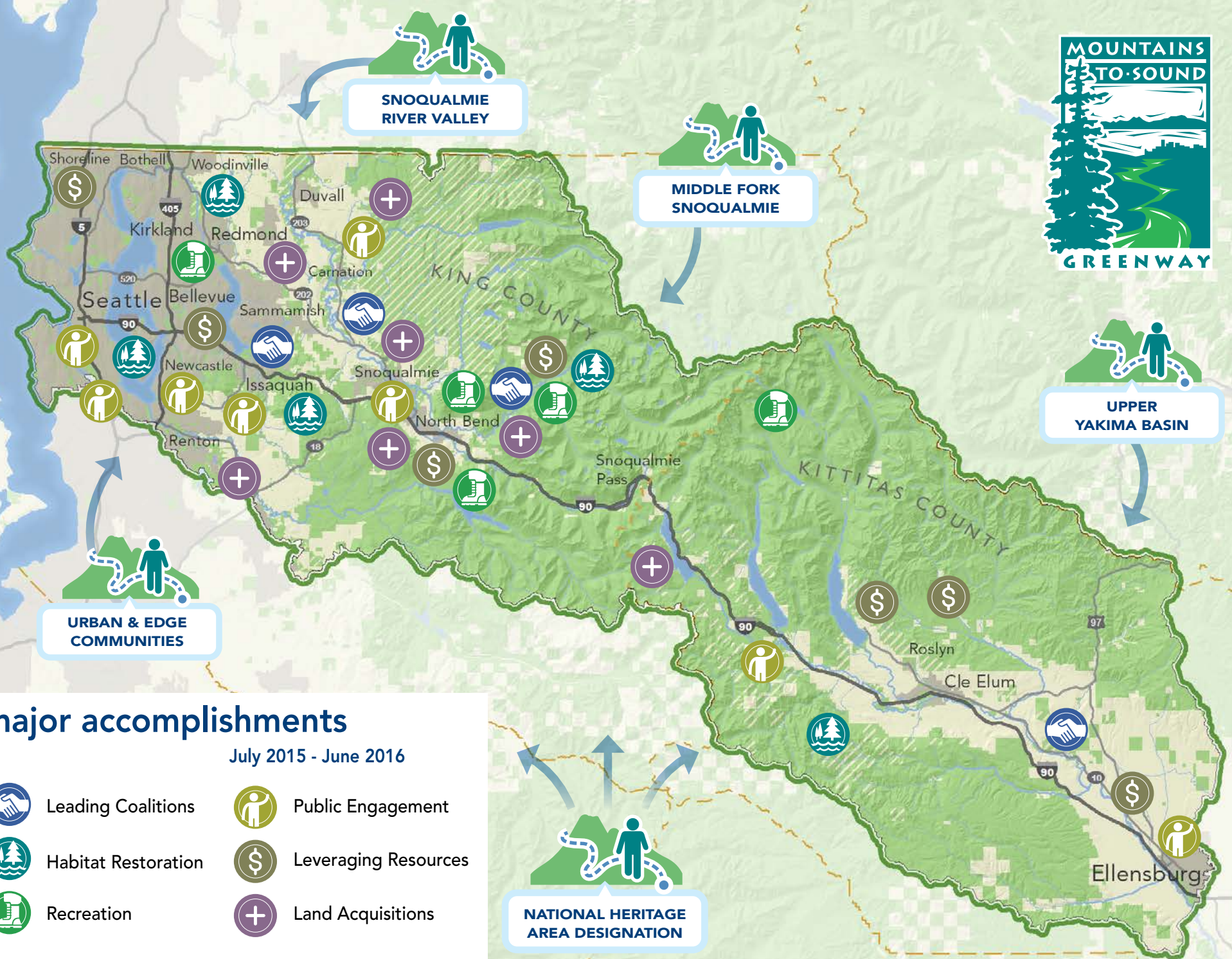
Collaborative solutions for trailhead congestion. When the road to popular trailheads on Mt. Si became dangerously overcrowded, neighbors, State Department of Natural Resources, and King County Roads partnered to install more signage, create more parking spots off the road, and give law enforcement authority to DNR officers. Addressing safe, sustainable access is a core Greenway priority.



BRINGING THE GREENWAY
TO WHERE PEOPLE LIVE








BALANCING
COMMUNITY, NATURE, & ECONOMY



major accomplishments

July 2015 - June 2016

- | | | | |
|--|---------------------|---|----------------------|
|  | Leading Coalitions |  | Public Engagement |
|  | Habitat Restoration |  | Leveraging Resources |
|  | Recreation |  | Land Acquisitions |

	Public Lands		Conserved Private Farms & Forests		Rural Private Lands		Cities & Urban Growth Areas
--	--------------	---	-----------------------------------	---	---------------------	---	-----------------------------

project details mtsgreenway.org/report

board of directors

President
Kurt Fraese * | President, GeoEngineers

President-Elect
Tod McDonald * | Principal, Cypress Advisors

Immediate Past President
Bill Chapman * | President/CEO, Millennium Bulk Terminals

Founding President
Jim Ellis | Chairman Emeritus, Washington State Convention Center

Secretary
John Baier * | Attorney, Baier Law Firm

Treasurer & Operations Committee Chair
Jason Broenneke * | Partner, KPMG

Fundraising Committee Chair
Ken Krivanec * | President, Quadrant Homes

Board Engagement Committee Chair
Eric Artz * | EVP/COO, REI

Program Committee Chair
Doug McClelland ** | Assistant Region Manager, Washington State Department of Natural Resources

Executive Director
Jon Hoekstra * | Mountains to Sound Greenway Trust

Sally Bagshaw x | Councilmember, City of Seattle

Jim Becker | Founder, becker&mayer! and Smartlab Toys

Gary Berndt | Wildland Fire Liaison, Washington State Dept. of Natural Resources

Mark Boyar * | President, Middle Fork Outdoor Recreation Coalition

Kevin Brown | Director, King County Parks & Recreation

Will Castillo | Principal, GGLO

Dow Constantine x | King County Executive

Kitty Craig | Deputy Director, Washington Program, The Wilderness Society

Karl Forsgaard | President, Alpine Lakes Protection Society

Ava Frisinger | Former Mayor of Issaquah

Todd Glass | Partner, Wilson, Sonsini, Goodrich & Rosati

Kari Glover | Global Integration Partner, Retired, K&L Gates

Peter Goldmark x | Commissioner of Public Lands

Rich Grillo | Community at Large Representative, Cle Elum

Bruce Gryniowski | Partner, Gallatin Public Affairs

Don Hoch x | Director, Washington State Parks & Recreation Commission

Laura Hoffman | Amazon Publishing, Copper Ridge Farm

Cora Johnson | Geotechnical Engineer, GeoEngineers

Andrew Kenefick | Senior Legal Counsel, Waste Management of Washington

Jamie Kingsbury x | Forest Supervisor, USFS Mount Baker-Snoqualmie National Forest

Janet Knox | Principal Environmental Geochemist, Pacific Groundwater Group

Ken Konigsmark | Issaquah Alps Trails Club

Leon Kos | City Administrator (retired), City of Issaquah

Paul Kundtz | Northwest Director, The Trust for Public Land

Helen Lee | Financial Advisor, Morgan Stanley Wealth Management

Danny Levine | President, NationAd Communications

Arlene Levy * | Partner, Social Venture Partners

Josh Lipsky * | Partner, Cascadia Law Group

Robert Manelski | Senior Director, 787 Program, The Boeing Company

Gordon McHenry, Jr * | President & CEO, Solid Ground

Sue McLain * | Former Senior VP Delivery Operations, Puget Sound Energy

Chad Nesland | Director, Microsoft Procurement

Mary Norton | Meadowbrook Farm Preservation Association

Thomas O'Keefe | Pacific NW Stewardship Director, American Whitewater

Julia Parrish | Associate Dean of Academic Affairs, College of Environment, University of Washington

Marie Quasius * | Attorney, K&L Gates

Charles Raines | Director Cascade Checkerboard Project, Sierra Club

Janet Ray * | Asst VP, Corporate Affairs and Publishing, AAA Washington

Jim Reinhardsen * | Principal & Senior Managing Director, HEARTLAND

Grant Ringel | Communications Director, Puget Sound Energy

Floyd Rogers | Environmental Advocate

Vikram Sahney | Divisional Vice President, Sustainability, REI

Al Smith | Partner, Perkins Coie

David Sturtevant * | Vice President, CH2M

Maryanne Tagney | Community at Large Representative

Leah Tivoli | City Budget Office, Seattle

Mike Williams x | Supervisor, USFS Okanogan-Wenatchee National Forest

Kathy Williams | Former Senior VP, HomeStreet Bank

Joel Yoker | Solution Architect, Microsoft

* Executive Committee Member
x Ex-Officio (non-voting) Director

board of advisors

Claudia Balducci | Councilmember, King County Council

Jim Berry | Community at Large Representative, Sammamish

Steve Brand | Program Manager, Washington State Parks

Fred Butler | Mayor, City of Issaquah

Michelle Capp | District Ranger, USFS Cle Elum District

Susan Carlson | Partner, Social Venture Partners

John Chaney | Chair, King County Rural Forest Commission

James Chapman | Board, Alpine Lakes Protection Society

Alan Coburn | President & CEO, Green Trails Maps

Jim DeVere | Mayor, City of South Cle Elum

Jan Drago | Former Councilmember, City of Seattle

Reagan Dunn | Councilmember, King County Council

Eric Friedland | Overlake Medical Center

Leonard Garfield | Exec. Dir., Museum of History & Industry

Don Gerend | Mayor, City of Sammamish

Tom Gibbs | Vice President (retired), CH2M

Charles Glondo | Former Mayor, City of Cle Elum

Lee Grumman | Councilmember, City of Carnation

Kenneth Hearing | Mayor, City of North Bend

Jerry Henry | Senior VP (retired), Puget Sound Energy

Roger Hoesterey | The Trust for Public Land

Lisa Jensen | Councilmember, City of Newcastle

Ron Judd | Washington State Department of Transportation

Jeanne Kohl-Welles | Councilmember, King County Council

Kathy Lambert | Councilmember, King County Council

Matt Larson | Mayor, City of Snoqualmie

Terry Lavender | Conservation Advocate

Mike Livingston | Regional Director, WDFW

Doug MacDonald | Former Secretary of Transportation

David MacDuff | VP of Development, Intracorp Real Estate

Matthew Mattson | Mattson Law Firm

Joe McDermott | Council Chair, King County Council

Dan McDonald | Former State Senator

Jay McGowan | Mayor, City of Cle Elum

Mark McIntyre | Seattle Metro. Chamber of Commerce

Johnson Meninick | Confederated Tribes and Bands, Yakama Indian Nation

Julie Meredith | Program Administrator, WSDOT

Ash Miller | Associate, K&L Gates LLP

Mark Mullet | Senator, 5th District, WA State

Obie O'Brien | Kittitas County Commissioner

Laura Osiadacz | Kittitas County Commissioner

Larry Phillips | Former Councilmember, King County Council

Cleve Pinnix | Former Director, Washington State Parks

Martie Schramm | District Ranger, USFS Snoqualmie District

Ron Sher | CEO, Sher Partners

Peter Spiro | Technical Fellow (retired), Microsoft

Julie Stangell | Consulting Forester & Environmental Auditor

Dan Stroh | Planning Director, City of Bellevue

Art Tasker | State Lands Manager, WADNR

Todd Trepanier | Regional Administrator, WSDOT

Kurt Triplett | City Manager, City of Kirkland

Justin Vander Pol | Evergreen Mountain Bike Alliance

Jason Walker | Councilmember, City of Duvall

Glenn Wallace | President, King County Search and Rescue

Todd Welker | SE Region Manager, WADNR

Dan Youmans | Former Regional VP, External Affairs, AT&T

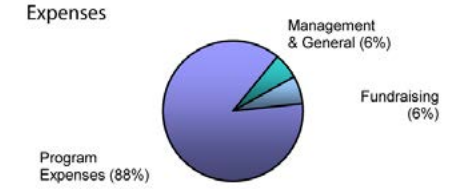
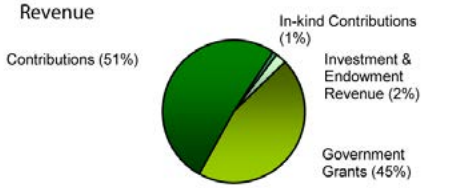
financial report July 2015 - June 2016

STATEMENT OF ACTIVITIES YEAR ENDING JUNE 30, 2016

Revenue	
Government Grants & Contracts	\$1,319,425
Contributions	\$1,492,009
In-kind Contributions	\$29,912
Investment & Endowment Revenue	\$71,981
Total Revenue	\$2,913,327

Expenses	
Program Expenses	\$2,383,607
Management & General	\$162,537
Fundraising	\$174,735
Total Expenses	\$2,720,879
Change in Net Assets	\$192,448

Net Assets - Beginning of Year	\$1,418,856
Net Assets - End of Year	\$1,611,304



Thank you to our donors.

The Greenway Trust gratefully acknowledges the individuals, businesses, and foundations that generously support our work across the Mountains to Sound Greenway.

greenway visionaries

\$100,000+
Greg Smith



Greg Smith's generous gift leads off the Greenway's new Middle Fork campaign.
To join the effort, contact Michael Woodsum.

\$20,000-\$30,000

Jim Ellis
Arlene Levy
Allan and Inger Osberg
Brogan Thomsen
The Thomsen Family

\$10,000-\$19,999

Alan Stephenson Boyd Family Trust
Nigel Ellis and Lynn Paquette
Bruce and Jeannie Nordstrom
Maryanne Tagney and David Jones
Doug and Maggie Walker
Jerry Tone and Martha Wyckoff

\$5,000-\$9,999

Betty Bottler
Bill and Frankie Chapman
Tom and Jean Gibbs
Thaddas Alston and Kari Glover
Jon Hoekstra and Jennifer Steele
Ron and Eva Sher
Robert Wiley

guardians of the greenway

\$2,500-\$4,999

Anonymous
Eric and Katie Artz
Jim and Barbara Becker
Andrew Cox
Kurt and Roberta Fraese
Jerry and Marguerite Lewis
Sue McLain and Steve Persing
Al Smith and Barb Potashnick
John and Jennifer Spaitth
Peter and April Spiro

Julie Colehour
Betsy Donworth
John and Doris Ellis
Kim and Scott Fancher
Jeff and Eleanor Freeman
Robert and Susan Gellatly
Todd and Rhonda Glass
Slade Gorton
Jerry and Linda Henry
Fred Herzberg and Jeanne Large
Patsy Huntington and John Gove
Mike and Peggy Kanaga
Andrew and Polly Kenefick
Janet Knox and Tom Fehsenfeld
Helen Lee
Danny Levine & Catherine Zimmerman
Russ Levy
Josh Lipsky & Laura van Dernoot Lipsky
Nancy Lomneth and Mark Boyd
Doug MacDonald and Lynda Mapes
Bob and Deanna Manelski
Doug and Kristi McClelland
Todd and Mary Nelp

Chad and Wendy Nesland
Mark and Sue Nikiel
Tod McDonald
Mary Norton and Joseph McElroy
Peter and Laura Orser
Don and Sue Phillips
Marie Quasius and Paul Fischer
Cristen Rankin
Matthew Reid-Schwartz and Sara Nickerson
Jim and Bonnie Reinhardsen
Steve and Paula Reynolds
Floyd and Judy Rogers
Steven Rogers and Shelly Hall
Vikram and Jessica Sahney
Matt and Jennie Shaw
David and Sue Sturtevant
Donna and Joshua Taylor
Robert and Mary Terrell
Gretchen Thomsen
Michael Ernst and Carol Weisbecker
Kathy Williams

\$1,000-\$2,499

Tom Alberg and Judi Beck
David and Leigh Bangs
Jim Berry
Jay Bower
Mark Boyar and Gretchen Weitkamp
Michael and Debra Bresko
Brad Brickman
Jason and Elizabeth Broenneke
Eric and Susan Carlson
Will Castillo and Beth Dwyer

keepers of the greenway

\$500-\$999

Anonymous
Jessica Adair
Greg and Lois Arms
Laura Austin
Ryan Barth
Tom Bayley
Mary Begley
Charles Bingham
Alan and Sally Black
Fraser and Deirdre Black
Steve Bolliger and Candace Smith
Marjorie Bombar

Steve Boyer and Reri MacLean
Cliff and Pauline Cantor
Allison Capen and Mark Iverson
Beverly and John Carey
David Chapman
Brad and Judy Chase
Therese Coad
Theodore and Patricia Collins
Fran and Gerry Conley
Jennifer and Chuck Creveling
Kathryn Erickson
Mary Evans and Steven Maggi
Ava and Bill Frisinger
Leigh Fulwood

Rosalie Gann and Steven Breyer
Tracy and Tom Garland
Vanessa Gemmell
David Gruenewald
Sandra and Duncan Haynes
Rene Hediger
Kelly and Andrew Heintz
Steve Hopp and Palmer Robinson
John Iani
Bryan Jones & Stacy Chevalier Jones
Beth and Steve Kahn
Mary Evans and Steven Maggi
Leon and Kathryn Kos
Ken and Kay Krivanec

\$500-\$999 continued

Jeff Lewis
Micki Lippe
Jim Livingston
Tavish MacLean
Erica Maniez
Gordon McHenry, Jr and Dorina Calderon-McHenry
Shelley and Scott McIntyre
Rick and Karen McMichael
Marla Mellies
Jens Molbak
Mr. and Mrs. Richard Moore
Mitchel Morey
John and Harriett Morton
Sen. Mark Mullet
Henry Mustin and Laura Lippman
Terry Mutter
Inez Noble Black
Gary and Darrel Norris
Lois North
Ann and Frank Novosel
Roger Nyhus
Peter and Mari Offenbecher
Margaret and Patrick Opalka
Erin Pangborn
Diego Piacentini and Monica Nicoli
Tom and Dixie Jo Porter
Janet and Terry Ray
Grant Ringel
Kyle Rolfe
Linda Rusch and Douglas Greenswag
Janet Ryan
Doug Schindler
Miya Schneider
Meredith and Craig Shank
Hunter and Martha Sims
Craig Smith
Julie Stangell and George Bennett
Robert and Jennifer Stephenson
Toni Townes-Whitley
Andrew and Lucie Ury
Monty and Lori VanderBilt
David and Lolly Victor
David Fuqua and Catherine Walker
Stephen Whyte
Ray and Judy Williams
Frank Yandrasits
Joel and Wendy Yoker
George Zinn

community members

\$250-\$499

Emily Anthony and David Maymudes
Kim and Mike Arellano
Sally Bagshaw
John and Lissa Baier
Mike and Teri Barnett
Dana and Eric Berow
Roger Bown and Kim Larsen
Herb Bridge and Edie Hilliard
Kevin Brown
Beth and Jeff Cassens
Peter and Holly Cleveland
Bob and Muffie Cohen

Eric and Amanda Conley
Pat Conover
Kitty Craig
Kathy Creahan and David Funke
Karen Daubert and Jared Smith
Missy Day
Roy and Lori Dereg
Patricia Devereux
Richard and Martha Draves
Steven Dunn
Ron Ehlenberger
Richard and Janet Eichler
Lynn and Mark Erickson
Gina Estep and Leif Olson
Jean Ferry
Jon and Cynthia Franklin
Robin Freedman
Marc Friedman and Hilary Loeb
Alden Garrett
Jeffrey and Bonnie Geers
Don Gerend
Richard Grillo
Bruce Gryniewski and Lisa Corbin
Marsha Hanson
David Harrison
Frederick and Catherine Hayes
Magnus and Heather Hedlund
Duane Henderson
Karen Hust and Todd Vogel
Cora and Brian Johnson
Phil and Kathy Jones
Judy Kalb
David Kappler and Ann Fletcher
Margaret Kilbourne-Brook
Gary Knesevitch
Anne Knight and Jerry Arbes
Hanuma Kodavalla
Fred Koontz
Paul and Anne Kundtz
Monica Leers
Tracy Lehfeltdt and Gregory Ehlinger
Marjorie Levar
Richard Stiles and Louise Liang
Konrad Liegel and Karen Atkins
Beth and Kelly Luna
Michael Lund
Peter and Linda Machno
Jeff Martine
Matthew Mattson
Judi and Bill Maxwell
Joe McDermott
Hilary and Pat McDevitt
Cam McIntyre
Ann McKee and Dale Hoff
Matt Mechler and Melinda Begalli
Michael and Madeline Merlino
Richard Mesher
Alan and Lizz Miller
Jay Naylor
Tim Noonan and Julie Conklin
Chuck Nordhoff
James Allard and Rebecca Norlander
Yvonne and Dennis O'Leary
Lynda and Bob Olson
Ralph and Peggy Owen

Kathy Patrick
Lindsay Eberts & Patti Paxton Eberts
Richard Penny
Matthew Perkins
Brian and Debby Peterman
Cleve and Marty Pinnix
Jay Pittenger
James and Peggy Price
Troy Rahmig
Les and Noella Rawlings
Tom and Sally Reeve
Karen Ruppert
Darshana Shanbhag
Chris Allen and Kristina Sigloh
Gerald Smith
Mike Stenger and Su Theida
Diane Stevens
Rich and Julie Stillman
Scott Chamberlin & Kierstin Swanson
John Traeger
Barbara Trafton
Christie True
Prasad Ullal
Wayne and Marta Ullman
Margaret Ullman-Hess and Eric Hess
Evelyn and Tim Vinopal
Keith and Debi Wertman
Kathleen Smith and Carl Wilson
Scott and Jennifer Wyatt
Ann Wyckoff
Dan and Sherri Youmans
Lauren Zondag
Mike and Sonia Zwilling

trail members

\$125-\$249

Anonymous
Bryan Adams
Mark Alguard
Susan Amorosi
Chris and Nancy Anderson
Honorable Beth Andrus
William Armbruster
Bob Aye and Carol Hunter
Pauline Bariola
Ginny Barney
Neno and Elma Bartocci
Katrina Bayens
Rich and Anne Benson
Janet and Charlie Bird
Kyle Blum
Connie Blumen
Colette and Warren Boeker
Timothy Bombar
Robin Boyer
Tom and Mary Brucker
Veronica Burgess
joan burlingame
Louis Burzycki
Fred Butler
Scott Butterfield
Gary Carlson
Erin Cawley-Morse
Fred Chapman
John Chelminiak

\$125-\$249 continued

Lynn Claudon
Rep. Judy Clibborn
David Clodfelter and Leslie Norton
Louis Collins
Michael Collins and Karen Carlson
Cheryl Conklin and Jeff Bergstrom
Dow Constantine
Jennifer Cook
Rob Crichton
Kelly and Reed Cundiff
Bruce Danielson
Maud and Marc Daudon
David Della
Nathan Dire
Pat Donnelly and Wende Dolstad
Adam Draper
David Egan
Donna Richman and Mike Ehrenberg
Matt and Sally Elley
Steven and Karen Ellis
Evan Buehler and Jessica Emerson
Marilee and Robert Erickson
Daniel Farber
Liv Faris and Keith Bubach
Richard Fichera
Barbara and Tim Fielden
Stephen and Judi Finney
Bruce Firestone
Daniel Flinn
Phil and Patty Fordyce
Karl and Mary Forsgaard
Michael Garrity
Cathy Gibson and Aleksei
Krasnokutsky
Bruce and Lynn Gibson
Stephen Gibson
Ashit Gosalia
Fred and Kathy Govier
Dorothy Graham
Lynn Granberg
Mike Greenfield
Darren Greve
Martinique Grigg
Randolph and Dara Haagens
Rick Haase
Sonja Hanson and Patrick Hurley
Verna Harms
Orin Hasson and Deva Dawson
Guy Haycock
Michael and Angela Heald
Patricia and Allyn Hebner
Donald and Lorelei Heisler
Quintin and Debbie Hess
Susan Hill
Donald Hoekstra
Laura Hoffman
Cynthia Holtz
Linda Hopper
Tim Hopper
Kathy and Warren Huckabay
John Iwanski
Angela Jin
Mark R. Johnsen
Greg Johnson

Janne Kaje
Nancy Keith
Tamie Kellogg
Brian Kelly
Melanie Kelsey
Ziad Khalidi and Hiddy Awwad
Nimish Khanolkar
Alana Killeen
Andrew King
Anne Knapp
Aimee and Satya Kommini
Scott Koppelman
Yvonne Kraus
Ray and Louise Lapine
Terry Lavender
Michael Lazarus
Edward and Dawn Lee
Lanzi Li
Grace Li Bergman
Hal and Gloria Lindstrom
Sharon and Bill Linton
Sen. Steve Litzow
Bin Liu and Min Ma
Larry Loftis
David Lomet
Elise Lufkin
Elizabeth Lunney
Rep. Chad Magendanz
Judy Maleng
Kevin McDonald
John McGarry and Michelle Wernli
Mary Beth McGee
Steven and Melody McGinnis
Mark and Alexa McIntyre
John and Lisa Merrill
Michelle Metzler
Dwight Miller
Tom and Susan Miller
Mike and Heather Morelli
Dave Mozzone
Mary Nakasone
Karen Nelson
Kate Neville
Hal and Peggy Newsom
Doru and Oana Nica
Mark Nickerson
Keith Niven
Dane Odekirk
David and Rosemary O'Hara
Laura O'Hara and David Gustafson
Thomas O'Keefe and Rie Yamazaki
Kortney Okura & Maureen Kennedy
Gordon Orians
Michael Paine
Alan Painter
John Parkey
Anita Penuelas
Kathleen Pierce
Chris Pohl
Sandra Prescott
Susan Price and Scott Springer
Charles Raines and Cindy Seramur
Margaret Reynolds
Joan and Donald Roberts
Jim Roth and Marti McGinley

Willow Russell and Karen Myers
Sal and Judy Russo
Allyson Schrier
Charles Scott
Joan Scott
Sidnie Shaffer
Dennis Shaw and Julie Howe
Gary Sheneman
Rupali and Rajesh Sheth
Shawna Shilmover
Megan Smith and David St. John
Rob Smith and Joni Bosh
Sean and Billie Jo Smith
Jon and Sally Soest
John and Rebecca Steel
Chriss Stephens
John Stephens
Peter Stevens
Kevin and Felicia Stone
Dan Stonington
Dan Stroh
Kent Sundberg
Burleigh and Katie Surbeck
Erik Swenson and Cornelia Schneider
Duy-Linh Ta
Stephen Tan
Katy Terry
Linda Tessier
Harry Thomas
Steve and Terri Thomas
Elizabeth and Ron Tickman
Brenda Tinchler
Teresa and Galen Trail
Tom and Wendy Tyner
Manny and Sally Vellon
Robert and Pamela Verginia
Alyssa Villablanca
Scott and Marion Vokey
Jason Walker and Pamela
Schulenburg
Janet Wall
Rebecca Walter
Andy Wappler
Walter and Jeanie Watts
Robert Weigle
Margaret Weiland
Perry Weinberg
Ann Welz
Leah Wener-Fligner
Brian White
Dave and Jean White
Katrina Williams
Steven Windell
Michael Woodsum
Alan Painter
Lillian Woolworth
Jeanne Yu
Mona Yurk

watershed members

\$75-\$124

Joe King and Janet Adams
Dave Albano
Roxann and Larcy Amorelle
Ann and Victor Bahna

\$75-\$124 continued

Elisabeth Bell
Marc and Marcy Berejka
Herb and Erica Bergamini
Philip Bernstein
Mary Bicknell
Kathy Biever
Terri Bookwalter
Jeff and Elizabeth Bottman
Carson Bowlin and Claire Topalian
Donna Bowman-Coe & Elijah Bowman
David Boyar
Paul and Jane Boyce
Kathy and John Bray
Jared Brigham
Andrew Brown
Tom Bugert
Steven Burke
Craig Burlingame
Bob Burns
Rob and Marta Cahill
Andy Cahn
Brian Callanan
Stacey Cepeda
Josh Chaitin
Katherine Cheng
Joan Clarke
Stephen Cobert
Dale W. Cole
Patrick and Pamela Cook
Alan Cordova
Christina Crowell
Allen J. Curtis Jr
Brian Dalpez
Marisa D'Angeli and Thomas Brogan
Suzanne de van der Schueren
Jordan and Katie Denmark
Julian and Alice Dewell
Alexis Dimarucot
Andrejs Dimbirs
Mackenzie Dolstad & Shawnti Rockwell
Wick and Sheila Dufford
Tracy Durnell
Sally Esposito
Delmar and Sandra Fadden
John Fading and Alice Goldberg
Nicole Faghin and David Spence
Kevin and Deborah Farlee
Katherine Felton
Dennis Ferry
Catherine Fisher
Jim and Julie Gardunia

Lulu Gephart
John and Janis Giesa
Emily Godfrey
Kirk and Kathy Godtfredsen
Amanda Godwin
Peter and Wendy Goldmark
William Green
Kirk Griffin and Sally Hull
Joanna Grist
Ingrid Gulden
Sean Hallberg
Judy Hallisey and Barry Brunson
Paula and Alan Hammond
Dave and Sandy Hanower
Eric and Gwen Hanson
Martha Hanson
Gregory Harkins
Kim Harper
Ed and Rosemary Harrell
Martin Hatscher
Kathryn Haupt
Ernie and Virginia Hayden
Bob and Mary Hildie
Kelly and Patrick Hill
Jacob Hladky
Don Hoch
George and Diana Holland
Katherine Hollis
Stephanie Huck and Corey Wheatley
Andrea Imler
Liz Inman
Rosemarie and Jonathan Ives
Jon Jancola
Andrew Jay
Donald Jeffery
Artemus Jenkins
Jon Jensen
Sapna Jeswani
Wil Johnson
Candace Jordan
Joanne Kalas
Kim Kaminski
Howard Kapustein
Charles and Roberta Katz
Andy Kehler
Michael Keller
Steve and Janet Keller
Julie Keough
Brian Klamik
Lisa Koper and Michael Gluck
Christopher Krawczyk
Susan LaCroix

Erik and Kristine Lange
Tara Larson
Margaret Lead
Dave LeCompte
Hae Lee
Craig Lenhart
Douglas Linquist
Cory and Heidi Loewen
Mike Long
Mary and Patrick Mahoney
Diane and Richard Manson
Joey Manson
Fernando Martinez
Nelson Mathews
Mike and Janelle McCarty
Nora McCord
Dan and Janie McDonald
Katherine and Chris McGee
Rick McGuire
Renate McVittie
A. Meinhardt
James and Barbara Miller
Julie Miller
Shyla Miller
Theresa and Scott Mosier
Alexandre Moura
Mike and Marsha Munson
Elisa Murray
Ralph Naess and Denise Dahn
Sanjay Nagamangalam
E MacArthur Noyes
Katie O'Sullivan
John Owen
Donald Padelford & Sue Livingstone
Margaret Padelford
Patricia and Jeff Pahre
Eriann Pearson
Marla Peele
Richard and Susan Phillips
Phyllis Pierce
Christoph Ponath
De'Sean Quinn
Srikanth Raghavan
Margo Reich
Lisa Reid
David Hill and Titti Ringström
John Roper
David and Karen Rugen
Ursula Recker and Michael Rys
Richard and Janet Sandaas
Mike Schlafmann
Eric and Tera Schreiber



in-kind support

Alta Planning + Design
Jim and Barbara Becker
Chateau Ste. Michelle
GGLO
Greenvelope
HEARTLAND
Jones & Jones
Architects+Landscapes Architects+Planners

Leigh Smith
Pacific Medical Centers
Perkins Coie
Wingstop
Zeek's Pizza

\$75-\$124 continued

Eric Schuehle
Danielle Shaw
Pat Siggs
Lauren Smith
Robert Smith
Sue and Tim Stewart
Andy and Verealea Swayne
Dennis Timm
Steven and Nancy Tochko
Margaret Tolleshaug
Paul and Tina Townsend
Lori and Richard Vandemark
Ms. Ramseyer & Ms. Vanschravendijk
William Victory
Robert Viens and Gwyn Jones
Anthony Voellm
Thomas Vogl
Paul and Elaine Vonrosenstiel
Brian Vrablick
Wendy Weiker
Jerry Wheeler
Elizabeth Whetham
Dan Wiebe
Charles Wilkinson
Shane Williams
Bethany and Peter Williamson
John Wilson
Susan Yates
Ryan Yelle

forest members

\$50-\$74

Anonymous
Sarah Andersen
Brad Anderson
Gilbert and Mary Jane Anderson
Emma Archer
Brian Atkins
Leslie Aungst
Dave and Becky Bechtold
Lilah Behrend
Karen Berg
Erika Bergman Kinno
Graeme and Cathryn Blake
Natalia Boldyreva
Virginia C. Broudy
Lorna Brown
Marte Fallshore and Dale Brubaker
Joseph and Jean Buhaly
Michael Butine and Laine Cowan
Jennifer Byrne
Shannon Campion
Michael and Karen Champion
Michael Chiorean
Laurie and Douglas Clinton
David Cordova
Melanie Cossette
Nathan Crawford
Ronald Czarney & Wendy Romanchuk
Amy D'Amato
Renee Dagseth
Bill and Molly Davis
Reiner and Mary Decher
Rod Dembowski

Dawn Deriso
Stu Dick
Steve and Debbie Dowd
Benjin Dubishar
David Dunphy
Marilyn Edlund
Christine Edwards
Noma and Craig Edwards
Scott Edwards
Will Einstein
Susan Elderkin
Gerald Eller
H. Erick Ellis
Ann Ewel
Margaret Fern
Ethan Fetz
Laura and Chris Fisher
Joseph Fjelstad
David Fluharty
Debbie Frame
Daniel and Lynnda Fretwell
Manish Gaur
Peter Gernsheimer and Wanda Rybak
alex grant
Megan Greenfield
Thomas Gunby
Joachim Hammer
Vanessa Harmon
Shuko Hashimoto
Kurtis Hendrickson
Lisa Herbold
Michael and Sherri Higgins
Kipling Holland
Rachel and Mark Hopkins
Mark and Katherine Hughes
Lynn Hyde
Korhan Ileri
Joe Impecoven
Louis and Ruth Jacobson
Kristen Jarvis
Elizabeth Jones
Nikhat Karimi
Paul Kent
Clifford Kim
Roberta King
Laura Koch
Kate Kurtz and Jacob Sheppard
Camille Lagron
Bruce and Brigid Laing
Chris LaPointe
Ashley Laskowski
Billie Lawson
Martin LeBlanc
Tom and Ruth Lee
Peter Linton
Kathy Lu
Tamra Madenwald
Christine Mahler
Lindsay Malone
Andres Martinez Andrade
Natalie Massey
Olivier Matrat
Blazej Matuszyk
Marcie Maxwell
Ben Mayer

Brian Meyers
Louise and Stafford Miller
Mark Miller and Susan Samuelson
Elizabeth and Albert Modery
Rebecca Moore
Balendran Mugundan
Bob Myrick
Rajesh Nagpal
My Nguyen and Eric Cook
Court Olson
Dave and Elizabeth Olson
Patricia Osterholm
Thomas Palm
Alex Palumbo
David Papiez
Jeannie Patterson
Ben Pelkey
John Perlic
Judith Peterick
Erica Pettit
Christine Philipps
Mike and Shannon Pusich
Diana Putnam
Xiuqiang Qu
Christopher Ramko
Jack Richins
Mildred Rickey
John and Deborah Roberts
Mary Rogers
Genevieve and Martin Rollins
Esin Saka
Eric Schinfeld
Dr. Pepper Schwartz
Mark Scurrell
Bridget Sevigny
Linda Sheehan
Craig and Yumi Sherman
Claire Stauffer
Margaret Steele
Kate Stenberg
Susan Stillman
Maureen Stockmann
Constance Swank
Mary Jane and Peter Swindley
Andrew Taylor
Kevin and Laurie Tempest
Ron Roseman and Liz Thomas
Kimberly Tighe
Sandy Ting
Thea Tiryakioglu
Steve Trudell and Sally Graupman
Michael Truog
Trisha and John Tubbs
Jennifer and Scot Tucker
Gardiner Vinnedge
Katherine Wax
Merica Whitehall
Stephen and Mary Whitmore
Kurt and Christine Wieland
Jake Willey
Kathy Wilmering
Dale and Laurel Winebrenner
N.C. Wittenfeld
Neva Yorkston
Kathrin Young

corporate & foundation support

\$200,000+

Carter Subaru

\$100,000-\$199,999

REI Co-op
Satterberg Foundation

\$25,000-\$49,999

Bullitt Foundation
King County Wastewater Treatment Division
Microsoft
National Fish & Wildlife Foundation
Russell Family Foundation

\$10,000-\$24,999

AAA Washington
Greenvelope
Potelco
Puget Sound Energy
RealNetworks Foundation
Treeline Foundation

\$5,000-\$9,999

Asplundh Tree Expert Company
GeoEngineers
HEARTLAND
HomeStreet Bank
Huntington Steele
imortgage
Millennium Bulk Terminals-Longview
Norman Archibald Charitable Foundation
Perkins Coie
Quadrant Homes
Sterling Realty Organization
The Burnsteads
Urban Visions
Waste Management of Washington

\$1,000-\$4,999

Anonymous
4Culture
Alaska Airlines
Cascadia Law Group
CH2M
Cooper-Newell Foundation
DOWL
Eastside Runners
Ernst & Young
GGLO
Green Trails Maps
K&L Gates
King County
KPMG
Liberty High School
Moccasin Lake Foundation
Naked City Brewing

\$50,000-\$99,999

The Boeing Company
King County Flood Control District
National Forest Foundation



Ordinary People Foundation
Patagonia
PEMCO Insurance
Plum Creek Foundation
Port Blakely Communities
Recology CleanScapes
The Seattle Foundation
Sensus
Shelter Holdings
Snoqualmie Tribe
Tableau Software
The Trust for Public Land
Wilson Sonsini Goodrich & Rosati Foundation

\$50-\$999

Accenture
Adair Business Consulting
Amazon.com
Back Country Horsemen of Washington
Ballard Beer Company
Bank of America
Bill & Melinda Gates Foundation
Cascade Investment
Costco Wholesale
Douglas and Maria Bayer Foundation
EarthShare of Washington
Emergent BioSolutions
Expedia Charitable Fund
Google
Hancock Forest Management
Impact Strength and Performance
Keeler Family Fund
King Conservation District
Mike McClung Construction Co
Monsanto Fund
NBBJ
Network for Good
Nordstrom
NRG Energy
Parsons + Co
Puget Sound Energy Foundation
Relevant Planning & Development
South Fork Geosciences
The Watershed Company
Thomson Reuters
Umpqua Bank
UnitedHealth Group
Waddell Properties
Windermere Real Estate

Mountains to Sound Greenway Trust
2701 First Ave, Suite 240
Seattle WA 98121
206.382.5565

NON-PROFIT ORG.
U.S. POSTAGE
PAID
SEATTLE, WA
PERMIT NO. 5881

the greenway connects it all

mtsgreenway.org

