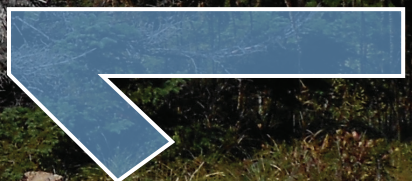




JULY 1, 2014 - JUNE 30, 2015

**Mountains to Sound
Greenway Trust**

ANNUAL REPORT

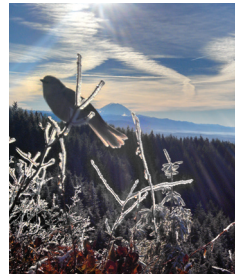




Mountains to Sound Greenway Trust

mission

The Mountains to Sound Greenway Trust leads and inspires action to conserve and enhance the landscape from Seattle across the Cascade Mountains to Central Washington, ensuring a long-term balance between people and nature.



vision

An iconic 1.5 million-acre landscape that conserves a healthy and sustainable relationship between land and people by balancing built and natural environments. A landscape providing places for nature and wildlife, for outdoor recreation and education, for working forests and local agricultural production, while embracing vibrant urban areas with strong economies. A landscape supported by a broad cross-section of society, working together as an effective coalition to preserve this heritage for future generations.

volunteers

4,739

PEOPLE
volunteered
with us



50%
YOUTH

40,362



HOURS spent by volunteers
building trails, planting trees,
maintaining native plant nursery,
and removing invasive weeds

75 MILES

TRAIL work
completed



15,520

NATIVE TREES AND
SHRUBS planted



education

5,114

STUDENTS participated
in the education program



+52% INCREASE
student involvement in
land stewardship activities

3,789

National Heritage Area
new ENDORSEMENTS
secured

national
heritage area

43,770

ACRES of new lands
conserved in the Greenway



53,681

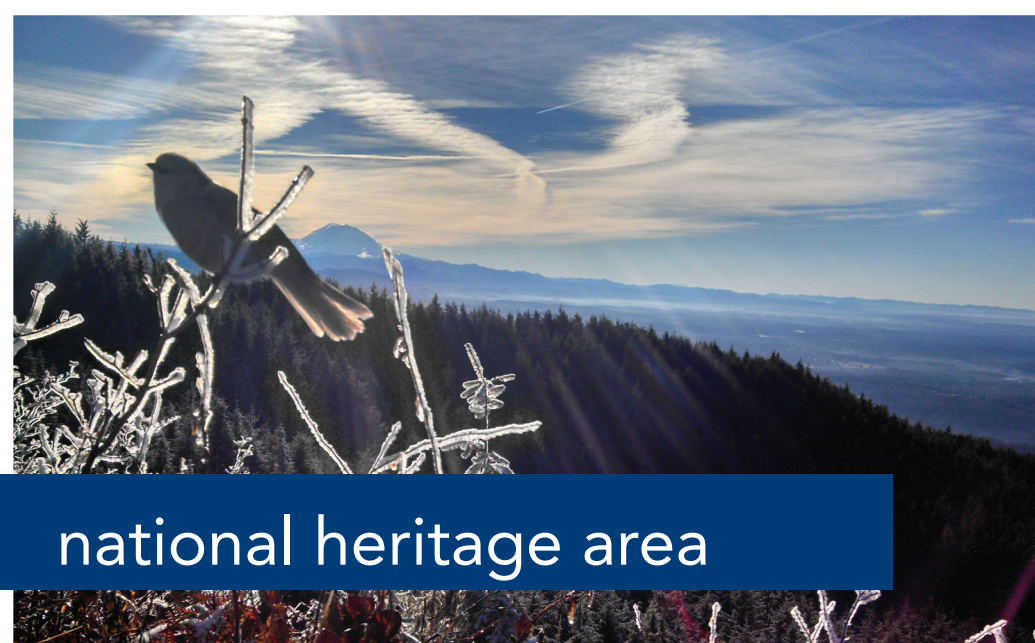
VISITORS to our website
www.mtsgreenway.org



3,819

FOLLOWERS on
Facebook/Twitter

media



national heritage area

Community asks Congress to designate the Greenway as a National Heritage Area.

- Legislation gained great momentum in the 2013-2014 Congress, passing out of committees in the Senate and the House, but narrowly missed being included in a final vote.
- In the 2015-2016 Congress, legislation was rapidly reintroduced, backed by strong bipartisan support from our congressional delegation.
- Hikers, climbers, bikers, paddlers, and outdoor enthusiasts from Outdoor Alliance added their voices in support, raising over 3,000 petition signatures in just a few weeks in spring 2015.
- 5,580 businesses, organizations, governments, and individuals endorsed the campaign.
- For latest updates about the campaign, visit GreenwayHeritage.org

TESTIMONY

"By recognizing the value of this landscape in an official manner, we can raise awareness that these corridors are a key element of our national infrastructure, capable of inspiring active living and enabling equitable access."

– Peg Staeheli, Founding Principal, SvR Design Company

"The connection between people and nature in this region is a truly special heritage."

– Michael Egeck, President/CEO, Eddie Bauer



recreation

Crafting a vision for the Middle Fork Snoqualmie. Once a haven for illegal activities, the Middle Fork Snoqualmie River Valley has been reclaimed as a recreation destination after 20 years of land conservation and cleanup by many individuals and organizations. This year we built a new Mailbox Peak Trail and parking lot, secured funding for recreation projects, and led discussions on how to manage increased use after road reconstruction is completed in 2016.

Mt. Teneriffe road-to-trail conversion. Working in partnership with the Washington State Department of Natural Resources, we converted 5.5 miles of former forest road on the slopes of Mt. Teneriffe to a hiking trail that ascends to the top of this 4,800-foot peak.

Repairing trails in Kittitas County. We worked with the Back Country Horsemen of Washington and the Okanogan-Wenatchee National Forest to do needed maintenance on the Dutch Miller Gap, Waptus River, and Pete Lake trails. This was also the second year of a pilot program for backcountry volunteer events, bringing volunteers out for an extended weekend of trail maintenance to work on trails not accessible during single-day events.

endorsers



BELLEVUE CHAMBER OF COMMERCE • EDDIE BAUER
LOCAL ROOTS FARM • FILSON • SUMMIT AT SNOQUALMIE
THE NATURE CONSERVANCY • RAILS-TO-TRAILS CONSERVANCY
BROOKS SPORTS • STUDENT CONSERVATION ASSOCIATION



state legislature invests in Greenway
RAGING RIVER MOUNT SI TIGER MOUNTAIN
IRON HORSE TUNNELS E. LAKE SAMMAMISH TRAIL
MIDDLE FORK SNOQUALMIE TANEUM CREEK



land conservation

The Greenway Trust worked closely with **public land management agencies** and other **conservation partners** to conserve:

Forests for Our Future. Acquisition of nearly all of the remaining Plum Creek checkerboard lands in Kittitas County. The second largest land deal in the history of the Greenway spans both sides of I-90 on the eastern slopes of the Cascades between Snoqualmie Pass and Cle Elum.

41,500 acres

The Nature Conservancy

Cole Butte & Thetis Creek. Conservation of the very last two sections of Plum Creek timber lands in the upper Yakima Basin. These properties connect wildlife habitat in an essential north-south corridor through the Cascades, and preserves the Pacific Crest Trail corridor.

1,507 acres

Trust for Public Land

Keechelus Ridge. Protection of wildlife habitat near the two planned I-90 wildlife crossing structures at Snoqualmie Pass. Conservation of this parcel will help elk, bear, cougar, and other animals move north-south in a habitat pinch point along the Cascade Range.

80 acres

Forterra

Foster Farm. Conservation easement on a Carnation family farm with a half mile shoreline of the Snoqualmie River south of the Tolt River confluence, adding to the connected conserved lands from Tolt MacDonald Park to Maes Lake Forest.

135 acres

King County



education

New intensive learning experience. We developed new curriculum for Two Rivers School to allow students to dig in deep for a more intensive outdoor educational experience. Students met monthly for six months for in-class lessons, field study trips, and hands-on ecological restoration at Ribary Creek.

'Chef to Farm'. Culinary students from Lake Washington Technical School visited local farms as part of a new class called *Trends in the Food Industry*, co-developed by the Greenway Trust. The class fosters an appreciation for where food comes from and how it is grown.

Snoqualmie Valley report. We launched a new publication, called the Snoqualmie 'Snapshot', that describes the forests, farms, fish, recreation, education, and heritage of the Valley, the health of the river basin, the challenges facing the region, and how residents can make a positive difference in the future of the Valley.

"Personally this is like a dream come true to see students investing in a special outdoor situation and learning how to observe and preserve it. I believe this project will make many of its participants better protectors and more appreciative denizens of their homes in our watershed"

– Joe Bergener,
Two Rivers School



52% INCREASE IN
STUDENT INVOLVEMENT IN
LAND STEWARDSHIP ACTIVITIES

5,114 STUDENTS PARTICIPATING
21,934 STUDENT HOURS

EIGHT CURRICULA BASED ON LOCAL ECOSYSTEMS

education

community partnerships



The secret to 24 years of success comes from our ability to effectively convene a **broad-based, bipartisan coalition** of local stakeholders.

Wildlife Bridges. Construction began on a 150-foot overpass near Lake Keechelus, which will connect publicly-owned forest lands on both sides of the freeway. This new wildlife bridge, a part of Washington State Department of Transportation's I-90 Snoqualmie Pass East Project, will be covered with native vegetation to provide forest cover and safe passage for wildlife.

Trailhead Shuttle. In an effort to ease congestion in the popular Mount Si recreation area, a pilot trailhead shuttle was launched during summer 2015. The shuttle, run by Compass Outdoor Adventures, is a collaborative effort with City of North Bend, Washington State Department of Natural Resources, the Greenway Trust, and Washington Trails Association to connect people with recreation opportunities and historic downtown North Bend.

25th Anniversary Trek. Hundreds of local citizens hiked and biked across the Greenway from Ellensburg to Seattle to celebrate the 25th anniversary of the original Greenway March, where the concept of a Greenway along Interstate 90 was born and citizens were inspired to thoughtfully shape our region's growth.



coalition
TIMBER & FARMING RECREATION GROUPS
FEDERAL, STATE, COUNTY, CITY GOVERNMENTS
CONSERVATIONISTS & ENVIRONMENTALISTS
NON-PROFITS BUSINESSES



habitat restoration

Carter plants 100,000th tree. Last October, we celebrated the planting of the 100,000th tree funded by Carter Subaru and Carter Volkswagen since 2008 through the *On the Road to Carbon Neutral* campaign. This unique partnership continues to make a significant impact to restore forest canopy in the Greenway.

Tolt River restoration and education. We joined forces with Remlinger Farms and the Girl Scouts of Western Washington to restore more than three acres along the Tolt River. The project involved working with local volunteers and conservation corps crews to remove invasive weeds and plant native trees, as well as engaging 3rd-12th grade students in on-site education and restoration activities.

Public/private partnership to control weeds.

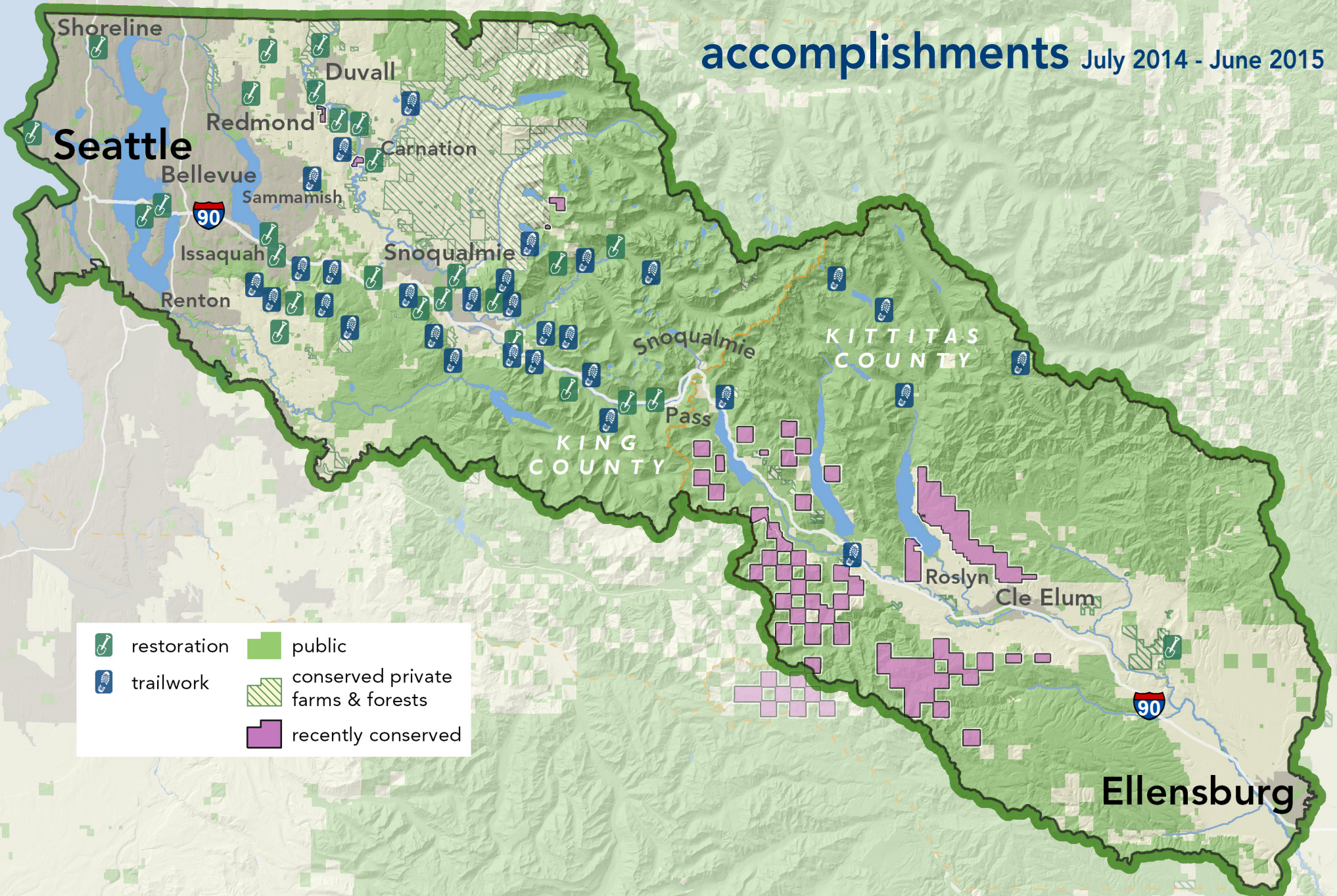
We worked with Washington State Department of Natural Resources to survey and control weeds on Tiger Mountain, in the Middle Fork and Mount Si Natural Resource Conservation Areas, and Rattlesnake Mountain; with the Mt. Baker-Snoqualmie National Forest and Federal Highway Administration to control weeds along the Middle Fork Road; and with public and private landowners along Issaquah and Little Bear Creeks, and the Raging and Snoqualmie Rivers, to control invasive weeds and plant native trees.

Restoration Sites

Bear Creek
Bessemer Mountain
Camp Korey
Chinook Bend
Discovery Park
Echo Glen
Gallagher Hill
Grouse Ridge
Hope Creek
Issaquah Creek
Lake Samm. State Park
Luther Burbank Park
Mercerdale Hillside
Mitchell Hill
Mount Si NRCA
Northcrest Park
Oxbow Farm
Park Pointe
Rattlesnake Mountain
Ribary Creek
Sammamish Cove
Snoqualmie Point Park
Snoqualmie River
Squak Valley Park
Swauk Creek
Tanner Landing
Three Forks Nat. Area
Tibbetts Creek
Tollgate Forest
Tolt River

Mountains to Sound Greenway

accomplishments July 2014 - June 2015



board of directors

- President**
Kurt Fraese * | CEO/President, GeoEngineers

Immediate Past President
Bill Chapman * | Washington Wildlife & Recreation Coalition

Founding President
Jim Ellis | Chairman Emeritus, Washington State Convention & Trade Center
- Vice President-Fundraising**
Ken Krivanec * | President, Quadrant Homes

Treasurer
Tod McDonald * | CFO/COO, Tully's Coffee

Secretary
John Baier * | Attorney, Baier Law Firm

Executive Director
Jon Hoekstra * | Mountains to Sound Greenway Trust
- Eric Artz** | EVP/COO/Chief Financial Officer, REI

Sally Bagshaw ^x | Councilmember, City of Seattle

Jim Becker | Creative Director and Founder, SmartLab Toys

Mark Boyar * | President, Middle Fork Outdoor Recreation Coalition

Jason Broenneke | Partner, Audit, KPMG

Kevin Brown | Director, King County Parks & Recreation

Will Castillo | Principal, GGLO

Dow Constantine ^x | King County Executive

Kitty Craig | Deputy Director, Washington Program, The Wilderness Society

Karen Daubert | Executive Director, Washington Trails Association

Karl Forsgaard | President, Alpine Lakes Protection Society

Ava Frisinger | Former Mayor, City of Issaquah

Todd Glass | Partner, Wilson, Sonsini, Goodrich & Rosati

Kari Glover | Global Integration Partner (retired), K&L Gates

Peter Goldmark ^x | Commissioner of Public Lands, Washington State Department of Natural Resources

Rich Grillo | Community at Large Representative, Cle Elum

Bruce Gryniowski | Partner, Gallatin Public Affairs

Don Hoch ^x | Director, Washington State Parks & Recreation Commission

Andrew Kenefick | Senior Legal Counsel, Waste Management of Washington

Janet M. Knox | Principal Environmental Geochemist, Pacific Groundwater Group

Ken Konigsmark | Issaquah Alps Trails Club

Leon Kos | City Administrator (retired), City of Issaquah

Paul Kundtz | Washington State Director, The Trust for Public Land

Helen Lee | Financial Advisor, Morgan Stanley Wealth Management

Danny Levine | President, NationAd Communications

Arlene Levy | Partner, Social Venture Partners

Josh M. Lipsky * | Partner, Cascadia Law Group

David MacDuff * | Capital Markets, OAKPOINTE
- Robert Manelski** | Senior Director, 787 Program, The Boeing Company

Doug McClelland ^{xx} | Assistant Region Manager, Washington State Department of Natural Resources

Gordon McHenry Jr * | President & CEO, Solid Ground

Mark McIntyre | Senior Director of Government Relations, Seattle Metropolitan Chamber of Commerce

Sue McLain * | Former Senior VP Delivery Operations, Puget Sound Energy

Mary Norton | City of Snoqualmie Parks Board, Meadowbrook Farm

Thomas O'Keefe | Pacific NW Stewardship Director, American Whitewater

Lynn Peterson ^x | Secretary of Transportation, Washington State Department of Transportation

Marie Quasius | Associate Partner, K&L Gates

Charles Raines | Director Cascade Checkerboard Project, Sierra Club

Janet Ray * | Assistant VP, Corporate Affairs & Publishing, AAA Washington

Jim Reinhardsen * | Principal & Senior Managing Director, HEARTLAND

Grant Ringel | Communications Director, Puget Sound Energy

Floyd Rogers | Environmental Advocate

Vik Sahney | Divisional Vice President, Strategy, REI

Al Smith | Partner, Perkins Coie

Peter Spiro | Technical Fellow (retired), Microsoft Corporation

David Sturtevant * | Vice President, CH2M

Maryanne Tagney | Community at Large Representative

Don Whitehouse ^x | Regional Administrator, Washington State Department of Transportation

Kathy Williams | Senior Vice President, HomeStreet Bank

Dan Youmans | Former Regional VP, External Affairs, AT&T

* Executive Committee Member
^x Ex-Officio (non-voting) Director

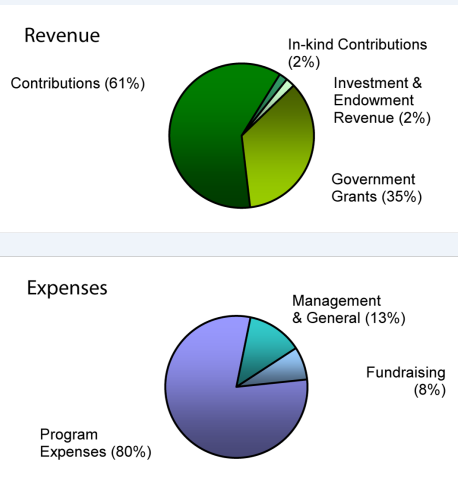
board of advisors

- Gary Berndt** | County Commissioner, Kittitas County Commissioners
- Jim Berry** | Community at Large Representative, Sammamish
- Steve Brand** | Washington State Parks
- Fred Butler** | Mayor, City of Issaquah
- Susan Carlson** | Social Venture Partners
- John Chaney** | Chair, King County Rural Forest Commission
- James Chapman** | Board, Alpine Lakes Protection Society
- Alan Coburn** | Green Trails Maps
- Jim DeVere** | Mayor, City of South Cle Elum
- Jan Drago** | Former Councilmember, City of Seattle
- Reagan Dunn** | Councilmember, King County Council
- Leonard Garfield** | Executive Director, Museum Of History & Industry
- Don Gerend** | Councilmember, City of Sammamish
- Tom Gibbs** | Vice President (retired), CH2M
- Charles Glondo** | Mayor, City of Cle Elum
- Lee Grumman** | Councilmember, City of Carnation
- Kenneth Hearing** | Mayor, City of North Bend
- Jerry Henry** | Senior VP (retired), Puget Sound Energy
- Roger Hoesterey** | The Trust for Public Land
- Lisa Jensen** | Councilmember, City of Newcastle
- Ron Judd** | Washington State Department of Transportation
- Julie Keough** | Forest Land Use Manager, Weyerhaeuser
- Kathy Lambert** | Councilmember, King County Council
- Matt Larson** | Mayor, City of Snoqualmie
- Terry Lavender** | Conservation Advocate
- Mike Livingston** | Regional Director, Washington Department of Fish & Wildlife
- Doug MacDonald** | Former Secretary of Transportation, Washington State Department of Transportation
- Matt Mattson** | Mattson Law
- Dan McDonald** | Former State Senator
- Johnson Meninick** | Confederated Tribes and Bands, Yakama Indian Nation
- Ash Miller** | Associate, K&L Gates
- Mark Mullet** | Washington State Senator (D-5)
- Chad Nesland** | Microsoft
- Obie O'Brien** | County Commissioner, Kittitas County Commissioners
- Nate Perea** | CEO, Snoqualmie Valley Chamber of Commerce
- Larry Phillips** | Councilmember, King County Council
- Cleve Pinnix** | Former Director, Washington State Parks & Rec. Commission
- Martie Schramm** | District Ranger, USFS Snoqualmie Ranger District
- Ron Sher** | CEO, Sher Partners
- Julie Stangell** | Consulting Forester & Environmental Auditor
- Dan Stroh** | Planning Director, City of Bellevue
- Art Tasker** | State Lands Manager, Washington State Department of Natural Resources
- Kurt Triplett** | City Manager, City of Kirkland
- Jason Walker** | Councilmember, City of Duvall
- Heather Watson** | Hancock Forest Management
- Todd Welker** | SE Region Manager, Washington State Department of Natural Resources

financial report July 2014 - June 2015

STATEMENT OF ACTIVITIES YEAR ENDING JUNE 30, 2015

Revenue	
Government Grants & Contracts	\$736,181
Contributions	\$1,264,832
In-kind Contributions	\$39,653
Investment & Endowment Revenue	\$42,129
Total Revenue	\$2,082,795
Expenses	
Program Expenses	\$1,559,572
Management & General	\$246,239
Fundraising	\$147,063
Total Expenses	\$1,952,874
Change in Net Assets	\$129,921
Net Assets - Beginning of Year	
Net Assets - End of Year	\$1,422,163



Thank you to our donors.

The Greenway Trust gratefully acknowledges the individuals, businesses, and foundations that generously support our work across the Mountains to Sound Greenway.

greenway visionaries

\$25,000+

Anonymous
Rita Maser Estate
Allan and Inger Osberg

\$10,000-\$24,999

Alan Stephenson Boyd Family Trust
Maryanne Tagney and David T Jones
Gretchen Thomsen
Doug and Maggie Walker

\$5,000-\$9,999

Bill and Frankie Chapman
Nigel Ellis and Lynn Paquette
Kurt and Roberta Fraese
Arlene Levy
Jerry and Marguerite Lewis
Ron and Eva Sher
Jerry and Edith Stritzke

guardians of the greenway

\$2,500-\$4,999

Anonymous
Betty Bottler
Eleanor Freeman
Tom and Jean Gibbs
Sue McLain and Steve Persing
Paula and Steve Reynolds
Al Smith and Barb Potashnick
John and Jennifer Spaith
Peter and April Spiro

Gary Chimes
Evelyn Daly
Betsy Donworth
John and Doris Ellis
Kim and Scott Fancher
Ava and Bill Frisinger
Tracy and Tom Garland
Todd and Rhonda Glass
Thaddas Alston and Kari Glover
Jeffery Gow
Sandra and Duncan Haynes
Jerry and Linda Henry
Gretchen Hull
Sally and Warren Jewell
Mike and Peggy Kanaga
Michael and Terrie Kavran
Andrew and Polly Kenefick
Ken and Kay Krivanec
Helen Lee
Danny Levine and Catherine Zimmerman
Jim Livingston
Nancy Lomneth and Mark Boyd
Doug MacDonald and Lynda Mapes

Tod McDonald
Gordon McHenry, Jr. and Dorina Calderon-McHenry
Brad and Nancy Meyers
Mark and Sue Nikiel
Bruce and Jeannie Nordstrom
Eric Noreen
Mary Norton and Joseph McElroy
John Pehrson
Marie Quasius and Paul Fischer
Jim and Bonnie Reinhardsen
Grant Ringel
Floyd and Judy Rogers
Vikram and Jessica Sahney
Anthony Shapiro and Karen Sparks
Cynthia Stroum
David and Sue Sturtevant
Donna and Joshua Taylor
Connie and Bruce Thayer
Webb Thomsen
Michael Ernst and Carol Weisbecker
Robert Wiley
Kathy Williams
Jerry Tone and Martha Wyckoff

\$1,000-\$2,499

Anonymous
Tom Alberg and Judi Beck
Eric and Katie Artz
David and Leigh Bangs
Jim and Barbara Becker
William and Mary Black
Alan and Sally Black
Jay Bower
Mark Boyar and Gretchen Weitkamp
Paul and Debbi Brainerd
Herb Bridge and Edie Hilliard
Will Castillo

keepers of the greenway

\$500-\$999

Anonymous
Rosalie Gann and Steven Breyer
Larry Banks
Dana and Eric Berow
Jim Berry
Fraser and Deirdre Black
Steve Bolliger and Candace Smith
Marjorie Bombar
Jason and Liz Broenneke
Dan Campbell
Laurel Canan
Cliff and Pauline Cantor
Beverly and John Carey
Eric and Susan Carlson

David Chapman
Brad and Judy Chase
Michael Collins and Karen Carlson
Theodore and Patricia Collins
Fran and Gerry Conley
Phil Defliese
Dan DeYoung
Steve Durrant and Chris Carlson
Michael Duyzend
Jim Ellis
Paul and Susan Flessner
Peter and Wendy Goldmark
Anthony Hey
John Iani
Jeff James and Lori Claudon James
Rick Johnson and Diane Berge

Ken Konigsmark
Cindy and David Krepyk
Paul and Anne Kundtz
David and Carol Leake
Edward and Dawn Lee
Alan Levy
Russ Levy
Josh Lipsky and Laura van Dernoot Lipsky
Fred Lunki
Mike and Barb Maher
Bob and Deanna Manelski
Dan and Karin Manning
Don and Melissa Manning
Scott and Jean Manning
Doug and Kristi McClelland

\$500-\$999 continued

Bo McFadden and Sharon Davidoff
Joe and Marie Mentor
Susan and Tom Miller
Ash Miller
Jens Molbak
Steve and Carol Moore
Henry Mustin and Laura Lippman
Matthew Neerincx
Todd and Mary Nelp
Stefanie and Andrew Nelson
Wendy and Chad Nesland
Mark Nickerson
Thomas O'Keefe and Rie Yamazaki
Yvonne and Dennis O'Leary
Peter and Laura Orser
Diego Piacentini and Monica Nicoli
Tom and Dixie Jo Porter
Janet and Terry Ray
Valerie and David Robinson
Karen Ruppert
Doug Schindler
Miya Schneider
Steve Seward
Meredith and Craig Shank
Matt and Jennie Shaw
Chris Allen and Kristina Sigloh
Hunter and Martha Sims
Julie Stangell and George Bennett
Jane and Alec Stevens
Rich and Julie Stillman
Dan Stroh
Keehn Thomsen
Mikal and Lynn Thomsen
Brogan Thomsen
Ben Tibbals and Jennifer Benner
Andrew and Lucie Ury
Monty and Lori Vanderbilt
Bruce and Cynthia Welter
Wayne Wright
Ann Wyckoff
Frank Yandrasits
Gary Young

community members

\$250-\$499

Anonymous
Emily Anthony and David Maymudes
Chuck Ayers
Dan and Linda Baker
Neno and Elma Bartocci
Douglas and Maria Bayer
Scott and Annette Bowen
Steve Boyer
Michael and Debra Bresko
Amy and Andreas Brockhaus
Kevin Brown
Fred Butler
Jeff Chapman and Juelie Dalzell
Bryan Cohen
Jeff Cole
Julie Colehour
Eric and Amanda Conley
Jennifer and Chuck Creveling
Jared Smith and Karen Daubert

Roy and Lori Dereg
Mackenzie Dolstad and Shawnti Rockwell
Richard and Martha Draves
Gary Drobnack
Wick and Sheila Dufford
Steven Dunn
Richard and Janet Eichler
Steven Maggi and Mary Evans
John Floberg and Lisa Bellefond
Jon and Cynthia Franklin
Bart and Esme Freedman
Jim and Carolyn Freese
Marc Friedman and Hilary Loeb
Robert and Susan Gellatly
Pardis Gharbani
Kirk Griffin and Sally Hull
Martinique Grigg
Sophie Hager Hume
Marsha Hanson
Kelly and Andrew Heintz
Duane Henderson
Katie Hickey
Dianne Hoff
Linda Hopper
Peggy and Pete Huckstadt
Sherry and Andrew Jaqua
Mark Johnsen
Bryan and Stacy Jones
Beth and Steve Kahn
David Kappler and Ann Fletcher
Margaret Kilbourne-Brook
Janet Knox
Hanuma Kodavalla
Leon and Kathryn Kos
Cynthia and John Krass
Marjorie Levar
Dr. Rick Stiles and Dr. Louise Liang
Thomas Lucas
The Luna Family
Elizabeth Lunney
David and Sara MacDuff
Peter and Linda Machno
Judi and Bill Maxwell
Hilary and Pat McDevitt
Kevin McDonald
Rick McGuire
Lynda Meadows and Jerry Kurtti
Matt Mechler
Mr. and Mrs. Richard Moore
Dave Mozzone
Dr. Marr Mullen
Syam Kumar Nair
Jay Naylor
Tim Noonan and Julie Conklin
James Allard and Rebecca Norlander
Lois North
Sean Northrop
Kerry Oldenburg
Judith Peterick
Brian and Debby Peterman
Larry Phillips
Cleve and Marty Pinnix
Monte Powell
Mike Pruett

Kristin Quam
Elizabeth Rappaport and Douglas Murdock
Alex Rea and Akane Suzuki
Dave Rodgers
Jim Roth and Marti McGinley
Linda Rusch and Douglas Greenswag
Dick Ryon
Joan Scott
Darshana Shanbhag
Joshua Sherman
Sean and Billie Jo Smith
Mechell Smith and Eric McNamee
Gerald Smith
Frank Greer and Stephanie Solien
John and Rebecca Steel
Mike Stenger and Su Theida
Elizabeth Swanson
Jennifer Tada
Steve and Terri Thomas
Diane Troje
Christie True
Prasad Ullal
Wayne and Marta Ullman
Edward Vervoort
Pamela Schulenburg and Jason Walker
David Fuqua and Catherine Walker
Janet Wall and Bruce Danielson
Perry Weinberg
Jean and Dave White
Stephen Whyte
Kathleen Smith and Carl Wilson
Sheffield Worboys
Scott and Jennifer Wyatt
Joel and Wendy Yoker
Dan and Sherri Youmans
Michael and Sonia Zwilling

trail members

\$125-\$249

Anonymous
Bryan Adams
Gilbert and Mary Jane Anderson
Chris and Nancy Anderson
Kurt Anderson
Denise Ashbaugh
Becca Aue
Julie Averill
Bob Aye and Carol Hunter
Sally Bagshaw
Lissa and John Baier
Ross Baker and Karen Brandvick-Baker
Claudia Balducci
Pauline Bariola
Ginny Barney
Robert Bass
Pete Beaupain
Meg Benson
Janet and Charlie Bird
David Boyar
Patrick and Rebecca Boyd
Mrs. Gundel Brockhaus
Stephen Brown and Sarah Battersby

\$125-\$249 continued

Tom and Mary Brucker
Joanna Buehler
Tom Bugert
Bernadette Bulacan Starin
Bonnie and Paul Bunning
Steven Burke
Kathy Burnaman
Devon Butler
Rob and Marta Cahill
Tom Carlson
John Chelminiak
Will Chin
David Clodfelter and Leslie Norton
Christine Cole and Devor Barton
James Colquhoun
Dave and Sarah Cook
Jennifer Cook
Keith Cousins
Kelly and Reed Cundiff
Joe Curtis
Ronald Czarney and Wendy
Romanchuk
Grant Degginger
Sarah Denton
Julian and Alice Dewell
Sean Donaltry
Jan Drago
Adam Draper
Lindsay and Patti Paxton Eberts
Noma and Craig Edwards
David Egan
Ursula English
Marilee and Robert Erickson
Sandra Fairchild-Miller
Liv Faris and Keith Bubach
Deb and Andrew Fitzpatrick
Eddie Fong
Karl and Mary Forsgaard
Beth Fujimoto
Jeffrey and Bonnie Geers
Mike Goldade
Slade Gorton
Ashit Gosalia
Laura "Bunny" Gowen
Paul and Jennifer Grimes
Shep Griswold
Lee Grumman
Bruce Gryniewski and Lisa Corbin
Harumi Guiberson
Randolph and Dara Haagens
Rick Haase
Sonja Hanson and Patrick Hurley
Eric and Gwen Hanson
Tim and Chitra Hanstad
John and Denise Hanstad
Guy Haycock
Liz and Steven Herbst
Scott and Priscilla Hickey
Susan Hill
Don Hoch
Roger and Cathy Hoesterey
Barton Housman
Marla Jackson
Jon Jensen

Jennifer Johnsen
Chris Kagen
Charles and Roberta Katz
Nancy Keith
Alan Keizur and Carolyn Whitten
Steve and Janet Keller
Dave Kelly
Sally Kentch and Larry Mauksch
Evan Kentop
Julie Keough
Katherine Killebrew
Hyeok Kim and Michael Parham
Anne Knight and Jerry Arbes
Melissa Krufka
Kathy Lambert
Terry Lavender
Michael Lazarus
Mina Le
Dave LeCompte
Monica Leers
Bryan Leslie
Ann and Brian Lewis
Konrad Liegel and Karen Atkins
Sharon and Bill Linton
Senator Steve Litzow
Mike Livingston
Larry Loftis
David Lomet
Gretchen Luxenberg
Mark Lybeer
Levin Lynch
Pamela McConkey
Mary Beth McGee
Catherine McGuire
Rick and Karen McMichael
Casey Dilloway and Shane McNamee
Edie Middleton
Louise and Stafford Miller
Brian Moynihan
Stephanie Nelson
Karen Nelson
Hal and Peggy Newsom
Inez Noble Black
Stewart Osgood
Gary Oswald
Margaret Padelford
Alan Painter
Steve Palmer
Marla Peele
Drew Petty
Kathleen Pierce
John Platt and Lisa Heilbron
Susan Price and Scott Springer
Mike Quinn
Les and Noella Rawlings
Tom and Sally Reeve
Ben and Nicole Reinhardsen
David Rice
John Richcreek
Marie Ricketts
Mark Rieder
Joel Roalkvam
Carlyn and Michael Roedell
Carrie and Brad Rorem
John and Patty Rose

Mark Santschi
Gretchen and Thomas Shepard
Patricia Simpson
Jim Slayton
Jon and Sally Soest
Katie Stack and Pavel Mazac
Dennis and Jackie Stambaugh
Stephen Stanley
Chriss Stephens
Noelle Swanson
Andy and Veralea Swayne
Jeff Tayer
Kevin Tempest
Katy Terry
John Traeger
Teresa and Galen Trail
Fran Troje
Tom and Wendy Tyner
Justin Vander Pol
Manny and Sally Vellon
Robert and Pamela Verginia
Merrie Vieco
Joel Wachs
Anne Wardell
Walter and Jeanie Watts
Bill and Audrey Weitkamp
Ann Welz
Kenneth and Rosemary Willman
Janet Wilson and David Dunnington
Michael Woodsum
Lillian Woolworth
Lisa Younger

watershed members

\$75-\$124
Anonymous
Diane Adams
Melissa Adams
Jennifer Addis
Roxann and Larcy Amorelle
Donny and Sandy Anderson
Johannes Ariens
Meghan Barnes
Richard Bevan and Lesley
Burvill-Holmes
James and Mary Bicknell
Michael Bitz
Laura Blanford
Kyle Blum
Chris Bohner
Timothy Bombar
Paul and Jane Boyce
Alan Boyd
Robin Boyer
Barbara Braun and Curtis Allred
Bill Bryant
Veronica Burgess
joan burlingame
Nicole Burnett
Larry and Aileen Carter
Michael and Karen Champion
Michael Chiorean
Hugh and Suzanne Clark
Hannah Clark
Karina Collins and Mark Baker

\$75-\$124 continued

Pat Conover
Kitty Craig
John Creighton III
Indy Crowley
Kimberly Darrin
Missy Day
David Della
Rod Dembowski
Thomas Donn
Peter Durkee and Tessa Matthey
Peter Dykstra
Gerald Eller
Jason Elliott
Karl Engdahl
Delmar and Sandra Fadden
Kevin and Deborah Farlee
Brian Fennell
Dennis Ferry
Stephen and Judi Finney
Daniel Forbes
Jerry and Phyllis Franklin
Susan and Albert Fuchs
Lynn Gates
Mitch and Robin Gitelman
Steven Gott
Fred and Kathy Govier
Robert Gross
David Gruenewald
John and Lorraine Gunn
Judy Hallisey and Barry Brunson
Bob Hamilton
Paula and Alan Hammond
Verna Harms
Tod and Deborah Harrick
Ryan Harrison
Sara and Jim Harvey
Orin Hasson and Deva Dawson
Martin Hatscher
Michael Havens
Magnus and Heather Hedlund
David Heineck
Sherri Higgins
Bob and Mary Hildie
Annamarie Hoenig
John Hoey and Lisa Olason
George and Diana Holland
Andrea Imler
Rosemarie and Jonathan Ives

Norma Jackson
Louis and Ruth Jacobson
Candace Jordan
Kim Kaminski
Todd Karin
Michael Keller
Charlie Kellogg
Sara Kelly
Ziad Khalidi and Hiddy Awwad
Kathleen King
Bob and Carolyn Kitchell
Holly Knight
Laura Koch
Lisa Koper and Michael Gluck
Deb Kosche
Amrish and Arti Kumar
Pete Lagerwey
Eric Laschever and Eulalie Sullivan
Sue Ledbetter
Hae Lee
Kathy Lefferts
Dick and Carol Levinthal
Jochen Liesche
Hal and Gloria Lindstrom
Doug Linquist
Guislain Lagron and Jody Louise
Mike Lowry
Kathy Lu
Cindy Manheim
Brett Marl
Fernando Martinez
Linda Maxson and Talbott Miller
Mike and Emily McClung
Nora McCord
Dan and Janie McDonald
Casey McLaughlin
Rich Mehlberg
Eric and Lucy Meyer
Julie Miller
Dwight Miller
James and Barbara Miller
Brock Milliern
Florence and Wayne Mohler
Del and Nancy Moore
Theresa and Scott Mosier
Tim and Patti Murphy
Andre Needham
Emily Neff and Dieter Eckels
James Nida and Anneliott Willis

E MacArthur Noyes
Mike O'Brien
David and Rosemary O'Hara
Tracy O'Keefe
Kortney Okura and Maureen
Kennedy
Ruben Nieto and Barbara Olin
Margo O'Toole
Donald Padelford and Sue
Livingstone
Patricia and Jeff Pahre
Chris Pallemarts
Jennifer and Jeff Patterson
Elliot and Sally Paull
Bryce Peterson
Alanna Peterson
Kate Pflaumer
Christine Philipps
Richard and Susan Phillips
Rob Polasek
Christoph Ponath
Rich and Julie Pozniak
Sandra Prescott
Charles Raines and Cindy Seramur
Gordon Rasmussen
Michelle Roberts
Sal and Judy Russo
Richard and Janet Sandaas
Don and Mardi Sands
Michael Scavezze
David Schaefer
Mike Schlafmann
Eric and Tera Schreiber
Cindy and Mike Schwamberger
Phillip Scott
Lowell and Susan Sever
Bridget Sevigny
Shawn Shapiro
Abhishek Sharma
Shawna Shilmover
Pat Siggs
Jim and Jolanne Stanton
Albert Summerfield
Kent Sundberg
Kara Sylvester
Duy-Linh Ta
Dennis Timm
Sandy Ting
Trisha and John Tubbs



in-kind support

Brown Bear Car Wash
Champion Grocery
Chateau Ste. Michelle
Global Baristas dba Tully's Coffee
Green Trails Maps
Greenvelope
HEARTLAND
Jones & Jones Architects+Landscape
Architects+Planners
Perkins Coie
REI

\$75-\$124 continued

Jamie Turnbull
Margaret Ullman-Hess and Eric Hess
Lori and Richard Vandemark
Robert Viens and Gwyn Jones
Ravinder Vuppula
Bennett Warriner
Leah Wener-Fligner
Jerry Wheeler
Elizabeth Whetham
Dan Wiebe
Shane Williams
Melanie Wilson
Michiel Wories
Ryan Yelle
Joanne Young

forest members

\$50-\$74

Courtney Aber
Robin Abercrombie
Christopher Allan
Sarah Andersen
Julie and Richard Armitage
Patrick and Cheri Baker
Thomas and Laura Bannister
Audrey Paisley and Bob Baumann
Dave and Becky Bechtold
Dana and Rena Behar
Tor Bell
Betsy Bell
Philip Bernstein
Catharine and Richard Beyer
Praveen Bhamidipati
Kathy Bieber
Graeme and Cathryn Blake
Alex Bond
Paul Bottge
Emily Brickner
Lorna Brown
Joseph and Jean Buhaly
Kay Burrell
Edward Buzzell
Shannon Campion
Barb Chamberlain
John Chaney
Stephanie Chapman
James and Carol Chapman
Dede Chinlund
Shanon Chong
Andrew Cleary
Marc and Beth Cordova
David Cordova
Fernando Garcia and Heidi Craig
Garcia
Nathan Crawford
Wyatt Curtiss
Bill and Molly Davis
Susan Dawson
Mark and Roberta de Regt
Derek Dexheimer
Stu Dick
Martin and Ann Dirks
Debbie and Steve Dowd
Marilyn Edlund

Dawn Ehlike
H. Erick Ellis
Ethan Fetz
Laura and Chris Fisher
Joanne Foster
Marleen Francis
Larry Franks
Jane Fronczak
Charles Gagnon
Manish Gaur
Wesley R. Gibbs
Emily Godfrey
Andrew Pedersen and Danielle
Graham
Joanna Grist
Peter and Susan Grote
George and Virginia Gunby
Vlad Gutman
Sean Hallberg
Martha Hanson
Elyse Hanson
Ernie and Virginia Hayden
Patricia and Allyn Hebner
Kelly and Patrick Hill
Jen Hille
Dean and Shirley Hobson
Mark and Katherine Hughes
Korhan Ileri
Veronica Ivaniukovich
Kristen Jarvis
Andrew Jay
Jackie Jeffers
Donald Jeffery
Hugh and Beverly Jennings
Xiaohua Jiang
Angela Jin
Michael Johnson and Sharon Bersaas
Susan Johnson
Megan Jolly
Elizabeth Jones
Melanie Kelsey
Paul Kent
ATM Shafiqul Khalid
Christopher Krawczyk
Cynthia Kriebel
Yongchul Kwon
Susan LaCroix
Bruce and Brigid Laing
Linda Lawson
Billie Lawson
Christie and Paul LeBar
Tina Lee
Tom and Ruth Lee
Edmund Lewin
Dr. Robert Lewis
Rachel Lodge
Franz Loewenherz
Mitch Long
Minfang Lu
Jonathan Manheim
Diane and Richard Manson
Kathy McCarthy
Cinda McSherry
Renate McVittie
Brian Meyers

Mark and Nivart Migotsky
Mark Miller and Susan Samuelson
Rebecca Moore
Donald Moritz
Dan and Ashley Murphy
Nancy Myhre
Rajesh Nagpal
Laurie Needham
Oliver Newth
My Nguyen and Eric Cook
Doru and Oana Nica
Nicole Nygaard
Court Olson
Patricia Osterholm
John Owen
Thomas Palm
David Papiez
Kathy Patrick
Eriann Pearson
Ruth and Donald Perdue
Amitha Perera
Frank Pritchard
Xiuqiang Qu
Bobby Ragsdale
Sam and Susan Ramsey
Matthew Renzelmann
Mildred Rickey
John and Deborah Roberts
Sandy and Andrew Roberts
Mike and Edith Ruby
Ursula Recker and Michael Rys
Jenny Score
Sasha Shaw
Bruce and Jean Sillers
Helen and Meredith Smith
Claire Stauffer
Margaret Steele
Kate Stenberg
Daniel Stoops
Constance Swank
Joe and Robin Taller
Ravi Tandon
Andrew Taylor
Julia Terlinchamp
Jim and Sara Thomas
Diane Timmons
Steve Trudell and Sally Graupman
Gardiner Vinnedge
Nancy Vollmar
Taldi Walter
Stephanie and Len Warden
Iris Von Jouanne and Jill Wendland
Keith and Debi Wertman
Judy White
Kurt and Christine Wieland
Cynthia Wilkerson
Brett Worrall
Dallas and Darlene Wylie
Susan Yates
Neva Yorkston
Sarah Young

corporate & foundation support

\$200,000+

Carter Subaru

\$100,000-\$150,000

Satterberg Foundation
Washington State Recreation and Conservation
Office

\$50,000-\$99,999

The Boeing Company

\$25,000-\$49,999

King Conservation District
National Fish and Wildlife Foundation
REI

\$10,000-\$24,999

AAA Washington
Microsoft
Rose Foundation
Treeline Foundation

\$5,000-\$9,999

Asplundh Tree Expert Company
GeoEngineers
HEARTLAND
HomeStreet Bank
imortgage
Issaquah Alps Trails Club
K&L Gates
King County Flood Control District
Laird Norton Real Estate
Master Builders Association
Perkins Coie
Port Blakely Communities
Potelco
Puget Sound Energy Foundation
Spring Family Trust for Trails
Sterling Realty Organization
The Burnsteads
Waste Management of Washington
Western Conservation Foundation

\$1,000-\$4,999

Anonymous
Alaska Airlines
AT&T Washington
CH2M
Eastside Runners
Ernst & Young
Gallatin Public Affairs
GGLO
Green Trails Maps
Greenelope
Hancock Forest Management
Hillis Clark Martin & Peterson
King County

KPMG

Millennium Bulk Terminal-Longview
New Belgium Brewing Company
Parsons Brinckerhoff
PCC Natural Markets
PEMCO Insurance
Plum Creek Timber Company
Preston Community Club
Quadrant Homes
Raman Family Foundation
Recology CleanScapes
Sellen Construction Company
Skellenger Bender
South Sound Motorcycles
Starbucks Foundation
Tableau Software
The Seattle Foundation
The Trust for Public Land
The Watershed Company
Thomson Reuters
Tulalip Tribes Charitable Fund
Unico Properties
Washington Department of Fish & Wildlife
Washington Foundation For the Environment
Washington Women's Foundation
Western Native Trout Initiative
YMCA Seattle
ZGF Architects

\$50-\$999

Amazon.com
Back Country Horsemen of Washington
Bank of America
Bill & Melinda Gates Foundation
Cherry Valley Dairy
Ellis Foundation
Friends of North Creek Forest
Google
Infospace
JPMorgan Chase
Keeler Family Fund
Kittitas Audubon Society
Liberty High School
McKesson Foundation
Mike McClung Construction Co
Morna Reid-Schwartz Foundation
NBBJ
Nintendo of America
Pacific Continental Bank
Relevant Planning & Development
Social Venture Partners
SvR Design Company
The Marlot Foundation
UnitedHealth Group
Washington Trails Association
Woodland Park Zoo

Mountains to Sound Greenway Trust
911 Western Avenue Suite 203
Seattle WA 98104
206.382.5565

NON-PROFIT ORG.
U.S. POSTAGE
PAID
SEATTLE, WA
PERMIT NO. 5881

the greenway connects it all
mtsgreenway.org

