

REQUEST FOR BID (RFB)
MOUNT SI NRCA – CCC TRAIL CONNECTION
PHASE 2



MOUNTAINS TO SOUND GREENWAY TRUST
MOUNT SI NRCA – CCC TRAIL CONNECTION – PHASE 2

REQUEST FOR BID (RFB) - COVER PAGE

Name of SERVICE PROVIDER: _____

Address: _____

Phone: _____

Email: _____

Website: _____

Contact Person's Name: _____

Title: _____

Signature of authorized official: _____

Date: _____

SERVICE PROVIDER shall electronically submit this form and all required documents by **5pm on March 29, 2024**.

Please submit all documents to:
Mike Stenger
Recreation Projects Manager
mike.stenger@mtsgreenway.org

REQUEST FOR BID (RFB)
MOUNT SI NRCA – CCC TRAIL CONNECTION
PHASE 2

Table of Contents

PROJECT DESCRIPTION.....	3
PROJECT LOCATION	3
EVALUATION FACTORS.....	3
SUBMISSION GUIDELINES AND REQUIREMENTS	4
Table 1: Mechanized Equipment	4
Table 2: Project Schedule & Milestones.....	5
Table 3: Reference Projects	6
Insurance and Prevailing Wage	7
Deadlines and Notifications.....	7
Table 4: Deadlines	7
SPECIAL CONTRACT REQUIREMENTS	7
TECHNICAL SPECIFICATIONS	8
Table 5: Trail Design/Construction Parameters & Management Goals	8
Table 6: Construction/Agreement Deliverables.....	8
SCHEDULE OF DELIVERABLES.....	9
APPENDIX A - VICINITY MAPS & TRAIL STANDARDS	10
APPENDIX B - FIRE PREVENTION & SUPPRESSION.....	12

REQUEST FOR BID (RFB)
MOUNT SI NRCA – CCC TRAIL CONNECTION
PHASE 2

PROJECT DESCRIPTION

The purpose of this project is to provide professional services to complete trail improvements for the Mountains to Sound Greenway Trust, working in partnership with the Washington State Department of Natural Resources.

This Project shall be based out of the Mount Si Natural Resources Conservation Area (NRCA) and the adjacent northern Middle Fork Block of DNR-managed trust lands.

The selected SERVICE PROVIDER will be engaged as a CONTRACTOR with the Greenway Trust to complete the Mount Si NRCA – CCC Trail Connection – Phase 2 to WADNR specifications as detailed in this RFB. (Note that the terms SERVICE PROVIDER and CONTRACTOR are used interchangeably in this document.)

The SERVICE PROVIDER will enhance the visitor experience and ensure environmental sustainability by finalizing trail layout, constructing approximately 1.9 miles of non-motorized multiuse trail, and installing five boardwalks (totaling 110 linear feet) and approaches.

Work shall be completed before June 30th, 2025.

PROJECT LOCATION

The project is reached via the CCC Road, departing from SE Mount Si Road, outside North Bend, Washington. Beginning of project (BOP) is found on trust lands, coordinates are: 47.48250, -121.66999. Trust land roads have gated access only. Gate coordinates are 47.48972, -121.68823. See attached Project Map & Details.

EVALUATION FACTORS

The Greenway Trust will rate proposals based on the following factors, with cost and adherence to project timeline being the most important factors:

1. Responsiveness to the requirements set forth in this *Request for Bid*
2. Relevant past projects including examples of work and references
3. Unit pricing and total bid amounts
4. Technical expertise/experience of bidder and bidder's staff
5. Ability to respond to Greenway Trust schedules and timeline

The Greenway Trust reserves the right to award to the bidder that presents the best value to the Greenway Trust as determined solely by the Greenway Trust in its absolute discretion.

MOUNTAINS TO SOUND GREENWAY TRUST | 2701 FIRST AVENUE, SUITE 240, SEATTLE, WA 98121
PHONE 206.382.5565 | EMAIL info@mtsgreenway.org | WEB mtsgreenway.org

REQUEST FOR BID (RFB)
MOUNT SI NRCA – CCC TRAIL CONNECTION
PHASE 2

SUBMISSION GUIDELINES AND REQUIREMENTS

The following submission guidelines and requirements apply to this *Request for Bid*:

1. Bidders (SERVICE PROVIDER) should notify the Greenway Trust of their intent to submit a bid. Notification should be made by email.
2. **Complete bid responses will include the following items.** Include additional information as separate attachment(s).
 - ☐ Proposed costs as detailed in the SCHEDULE OF ITEMS.
 - ☐ Hourly rates/costs for any items not included in the SCHEDULE OF ITEMS including labor and machine/power equipment. (Attached cost/rate sheet is preferred.)
 - ☐ If you have a standard set of terms and conditions, please submit them with your proposal. All terms and conditions will be subject to negotiation.
 - ☐ A list of proposed mechanized equipment to be used to complete the project.

Table 1: Mechanized Equipment

Equipment Type	Equipment Description (make, weight, width, etc.)

REQUEST FOR BID (RFB)
MOUNT SI NRCA – CCC TRAIL CONNECTION
PHASE 2

Proposed project schedule and milestones. This project must be completed by the project deadline of **June 30, 2025**. SERVICE PROVIDER must submit a project schedule with milestones outlining their plan for meeting the deadline. Please use the following table or attach information separately:

Table 2: Project Schedule & Milestones

CCC Trail Connection – Phase 2: Final Trail Layout Revisions		
Start Date	Completion Date	Project Approach
CCC Trail Connection – Phase 2 Trail Construction and Boardwalk Installations		
Start Date	Completion Date	Construction Approach

REQUEST FOR BID (RFB)
MOUNT SI NRCA – CCC TRAIL CONNECTION
PHASE 2

A list of at least two projects that are substantially similar to this project, including references for each. Examples of work should be provided.

Table 3: Reference Projects

Project #1 Name	
Project Location	
Project Owner/Agency	
Contact Name / Phone / Email	
Brief Description of Work	
Completion Date	
Project Cost	

Project #2 Name	
Project Location	
Project Owner/Agency	
Contact Name / Phone / Email	
Brief Description of Work	
Completion Date	
Project Cost	

REQUEST FOR BID (RFB)
MOUNT SI NRCA – CCC TRAIL CONNECTION
PHASE 2

Insurance and Prevailing Wage

The SERVICE PROVIDER is required to maintain Commercial General Liability (CGL) Insurance (\$2,000,000 general aggregate limit.) Employers Liability (Stop Gap) Insurance (\$1,000,000 per accident) and Business Auto Policy (BAP) Insurance (\$1,000,000 per accident.) SERVICE PROVIDER must submit proof of insurance and be prepared to name the Mountains to Sound Greenway Trust as additionally insured to be awarded this project.

The SERVICE PROVIDER will be required to abide by Prevailing Wage Rules (RCW 39.12.020) which applies to contractors and subcontractors performing work on public works contracts. Further information may be found at: <https://lni.wa.gov/licensing-permits/public-works-projects/prevailing-wage-rates/>

Deadlines and Notifications

Proposals must be signed by a representative that is authorized to commit the SERVICE PROVIDER'S company. Responses to this RFB must be received prior to 5pm Pacific time on the bid submittal deadline. Proposals must remain valid for a period of 90 days.

Table 4: Deadlines

DEADLINES	DATES
Notify Greenway Trust of intent to submit bid.	Friday, March 22, 2024
Bid submittal deadline.	Friday, March 29, 2024
Project proposal acceptance. *	Friday, April 12, 2024
Project completion deadline.	June 30, 2025

**The Greenway Trust reserves the right to adjust the proposal acceptance date.*

An on-site meeting may be scheduled between a SERVICE PROVIDER and the selection team if the Greenway Trust needs additional information to support the selection of a qualified SERVICE PROVIDER.

SPECIAL CONTRACT REQUIREMENTS

The SERVICE PROVIDER will also provide the following services:

1. Completion of project deliverables in accordance with specifications and Attachments.
2. Consistent communications with GREENWAY TRUST Project Manager on project schedule, progress, timelines, and any required assistance. Project schedules are to be updated weekly with the GREENWAY TRUST Project Manager.
3. Coordinate with the GREENWAY TRUST for ordering and delivery of any necessary project materials. The GREENWAY TRUST will provide coordination with DNR for additional materials: boardwalk materials, any gravel, timber, etc.
4. Inform Project Manager if a significant change to work is proposed.

MOUNTAINS TO SOUND GREENWAY TRUST | 2701 FIRST AVENUE, SUITE 240, SEATTLE, WA 98121
PHONE 206.382.5565 | EMAIL info@mtsgreenway.org | WEB mtsgreenway.org

REQUEST FOR BID (RFB)
MOUNT SI NRCA – CCC TRAIL CONNECTION
PHASE 2

5. Abide by all Industrial Fire Precaution Level (IFPL) regulations as set forth by DNR and outlined in the attachments to this agreement.
6. Ensure that the site is left clean to Project Manager’s satisfaction including removal of all debris from clearing and grubbing, rubbish, surplus materials, and discarded materials.

The GREENWAY TRUST will coordinate the following:

1. Communications with the DNR regarding project progress, and timelines.
2. Communications with the contractor regarding standards, scheduling, any additional project location flagging/staking, and other obligations pursuant to this contract.
3. Payment for ordered trail materials, including any surfacing gravel, rock, lumber.
4. Coordination with the contractor regarding materials delivery to the project site.

TECHNICAL SPECIFICATIONS

Table 5: Trail Design/Construction Parameters & Management Goals

Project Reference	Designed Use & Difficulty Rating	Targeted Trail Class	PMO & Managed Use
CCC Trail Connection – Phase 2	Designed use = pedestrian travel is primary use, mountain bike & equestrian use are authorized secondary uses.	*Trail Class #3 Approximately 36” Travel Width	*Hiking is PMO**
*Local deviations from Design Parameters may be established based on trail-specific conditions, topography, or other factors, provided that the deviations are consistent with their management intent and agreed upon by the Project Coordinators. **PMO = Primary Management Objective			

Table 6: Construction/Agreement Deliverables

Project Reference	Length	Other Project Details	Average Trail Grade
CCC Trail Connection: Final Design Revisions	10,200 Linear Feet/1.9 Miles	Design revisions will adjust the previously designed trail corridor on an as-needed basis to ensure the trail grade does not exceed 7%, unless agreed upon in advance by Project Coordinators.	5-7%
CCC Trail Connection: Trail Construction	10,200 Linear Feet/1.9 Miles	Approval of the revised trial design by the DNR Project Coordinator is required before construction begins.	5-7%
Installation of five boardwalks and approaches	110 linear feet of boardwalks	DNR will supply and deliver boardwalk kit materials to the closest adjacent road access to boardwalk installation sites .	0%

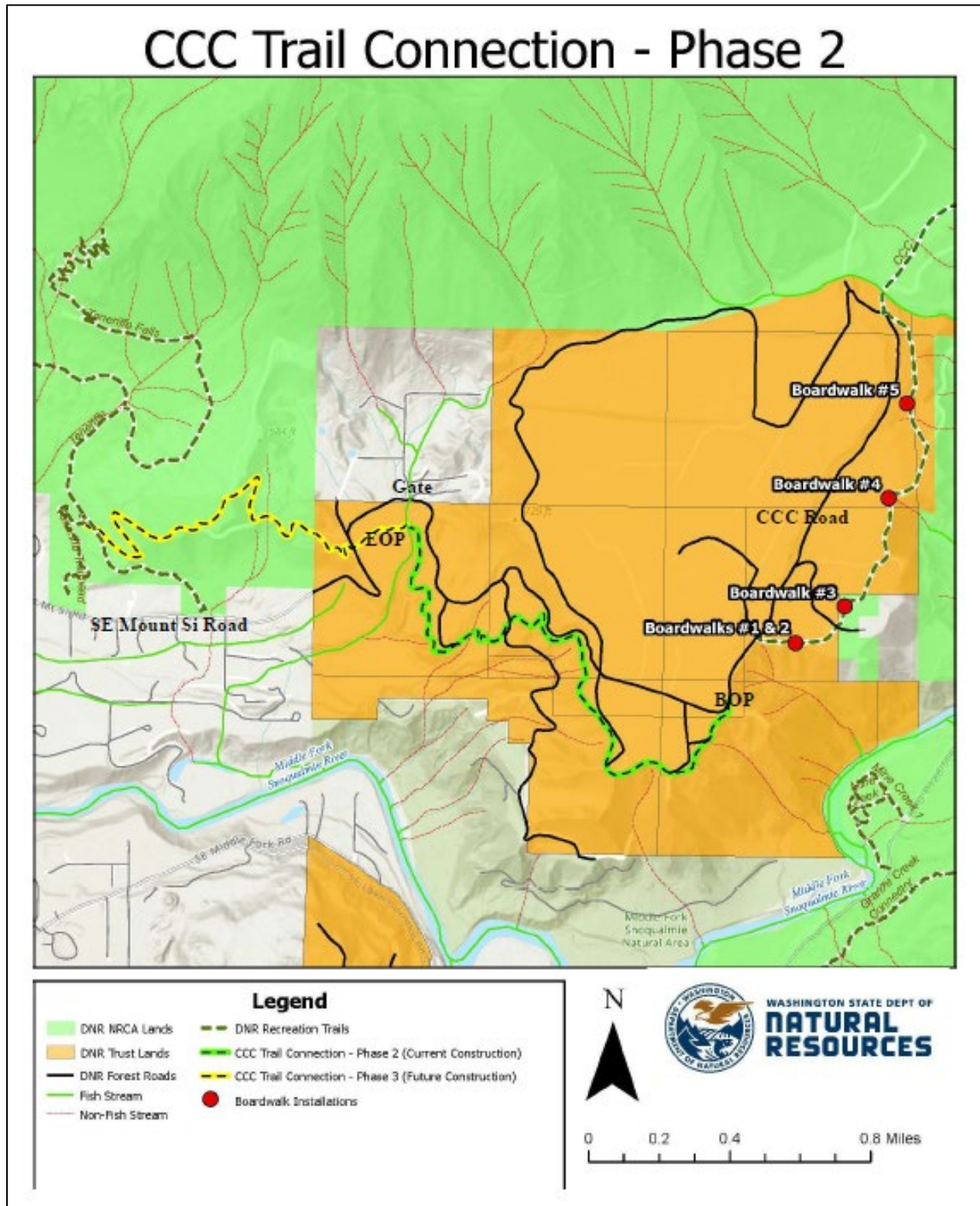
SCHEDULE OF DELIVERABLES

Final unit amounts may vary based on field conditions and by arrangement with the Greenway Trust. Estimated costs for deliverables must be valid for 90 days.

9

REQUEST FOR BID (RFB)
MOUNT SI NRCA – CCC TRAIL CONNECTION
PHASE 2

APPENDIX A - VICINITY MAPS & TRAIL STANDARDS



MOUNTAINS TO SOUND GREENWAY TRUST | 2701 FIRST AVENUE, SUITE 240, SEATTLE, WA 98121
PHONE 206.382.5565 | EMAIL info@mtsgreenway.org | WEB mtsgreenway.org

REQUEST FOR BID (RFB)

MOUNT SI NRCA – CCC TRAIL CONNECTION

PHASE 2



Trail Design Parameters

Hiker/Pedestrian (FSH 2309.18, Section 23.11, Exhibit 01)

Design Parameters are technical guidelines for the survey, design, construction, maintenance, and assessment of National Forest System trails, based on their Designed Use and Trail Class and consistent with their management intent.¹ Local deviations from any Design Parameter may be established based on trail-specific conditions, topography, or other factors, provided that the deviations are consistent with the general intent of the applicable Trail Class.

Designed Use HIKER/PEDESTRIAN		Trail Class 1	Trail Class 2	Trail Class 3 ²	Trail Class 4 ²	Trail Class 5 ²
Design Tread Width	Wilderness (Single Lane)	0" – 12"	6" – 18"	12" – 24" Exception: may be 36" – 48" at steep side slopes	18" – 24" Exception: may be 36" – 48" at steep side slopes	Not applicable
	Non-Wilderness (Single Lane)	0" – 12"	6" – 18"	18" – 36"	24" – 60"	36" – 72"
	Non-Wilderness (Double Lane)	36"	36"	36" – 60"	48" – 72"	72" – 120"
	Structures (Minimum Width)	18"	18"	18"	36"	36"
Design Surface ²	Type	Native, ungraded May be continuously rough	Native, limited grading May be continuously rough	Native, with some onsite borrow or imported material where needed for stabilization and occasional grading Intermittently rough	Native with improved sections of borrow or imported material, and routine grading Minor roughness	Likely imported material, and routine grading Uniform, firm, and stable
	Protrusions	≤ 24" Likely common and continuous	≤ 6" May be common and continuous	≤ 3" May be common, not continuous	≤ 3" Uncommon, not continuous	No protrusions
	Obstacles (Maximum Height)	24"	14"	10"	8"	No obstacles
Design Grade ³	Target Grade	5% – 25%	5% – 18%	3% – 12%	2% – 10%	2% – 5%
	Short Pitch Maximum	40%	35%	25%	15%	5% FSTAG: 5% – 12% ³
	Maximum Pitch Density	20% – 40% of trail	20% – 30% of trail	10% – 20% of trail	5% – 20% of trail	0% – 5% of trail
Designed Use HIKER/PEDESTRIAN		Trail Class 1	Trail Class 2	Trail Class 3 ²	Trail Class 4 ²	Trail Class 5 ²
Design Cross Slope	Target Cross Slope	Natural side slope	5% – 20%	5% – 10%	3% – 7%	2% – 3% (or crowned)
	Maximum Cross Slope	Natural side slope	25%	15%	10%	3%
Design Clearing	Height	6'	6' – 7'	7' – 8'	8' – 10'	8' – 10'
	Width	≥ 24" Some vegetation may encroach into clearing area	24" – 48" Some light vegetation may encroach into clearing area	36" – 60"	48" – 72"	60" – 72"
	Shoulder Clearance	3" – 6"	6" – 12"	12" – 18"	12" – 18"	12" – 24"
Design Turn	Radius	No minimum	2' – 3'	3' – 6'	4' – 8'	6' – 8'

¹ For definitions of Design Parameter attributes (for example, Design Tread Width and Short Pitch Maximum) see FSH 2309.18, Section 05.

² Trail Classes 3, 4, and 5, in particular, have the potential to provide accessible passage. If assessing or designing trails for accessibility, refer to the Forest Service Trail Accessibility Guidelines (FSTAG) for more specific technical provisions and tolerances (FSM 2350).

³ The determination of trail-specific Design Grade, Design Surface, and other Design Parameters should be based upon soils, hydrological conditions, use levels, erosion potential, and other factors contributing to surface stability and overall sustainability of the trail.

REQUEST FOR BID (RFB)
MOUNT SI NRCA – CCC TRAIL CONNECTION
PHASE 2

APPENDIX B - FIRE PREVENTION & SUPPRESSION

1. Fire Period and Closed Season Specific fire prevention measures are listed below and shall be effective for the period April 1 to October 31 of each year. The DNR follows and utilizes USDA Forest Service protocols for Fire Suppression measures. DNR and the Forest Service may change the dates of said period by advance written notice if justified by unusual weather or other conditions. Required tools and equipment shall be kept currently in serviceable condition and immediately available for initial attack on fires.

2. Fire Plan Before starting any operations on the project, the SERVICE PROVIDER shall prepare a fire plan in cooperation with the DNR & GREENWAY TRUST providing for the prevention and control of fires in the project area. The SERVICE PROVIDER shall certify compliance with fire protection and suppression requirements before beginning operations during the fire period and closed season, and shall update such certification when operations change.

3. Substitute Measures. The DNR and/or Forest Service may by written notice authorize substitute measures or equipment or may waive specific requirements during periods of low fire danger.

4. Emergency Measures The DNR and/or Forest Service may require emergency measures, including the necessary shutting down of equipment or portions of operations in the project area during periods of fire emergency created by hazardous climatic conditions.

5. Fire Control

The SERVICE PROVIDER shall, independently and in cooperation with the DNR and/or Forest Service, take all reasonable action to prevent and suppress fires in the project area. Independent initial action shall be prompt and shall include the use of all personnel and equipment available in the project area. For the purpose of fighting forest fires on or in the vicinity of the project which are not caused by the SERVICE PROVIDER's operations, the SERVICE PROVIDER shall place employees and equipment temporarily at the disposal of the Forest Service. Any individual hired by the Forest Service will be employed in accordance with the Interagency Pay Plan for Emergency Firefighters. The Forest Service will compensate the SERVICE PROVIDER for equipment rented at firefighting equipment rates common in the area, or at prior agreed to rates.

6. Compliance with State Forest Laws

Listing of specific fire precautionary measures herein is not intended to relieve the SERVICE PROVIDER in any way from compliance with the State Fire Laws covering fire prevention and suppression equipment, applicable to operations under this contract, permit or license.

7. Fire Precautions

Specific fire precautionary measures are as follows:

a. Smoking and Open Fires

Smoking and fires shall be permitted only at the option of the SERVICE PROVIDER. The SERVICE PROVIDER shall not allow open fires on the project area without advance permission in writing from Forest Service.

REQUEST FOR BID (RFB)
MOUNT SI NRCA – CCC TRAIL CONNECTION
PHASE 2

Unless restricted by State Law or Federal Regulation, smoking shall be permitted only in such portions of the project area that are free of flammable material. Smokers shall sit down to smoke in such a position that any burning material will fall within a cleared area, and shall extinguish and press out in mineral soil all burning material before leaving the cleared area.

b. Fire Extinguishers and Equipment on Trucks, Tractors, etc.

All power-driven equipment operated by the SERVICE PROVIDER on National Forest land, except portable fire pumps, shall be equipped with one fire extinguisher having a UL rating of at least 5 BC, and one "D" handled or long handled round point shovel, size "O" or larger. In addition, each motor patrol, truck and passenger-carrying vehicle shall be equipped with a double-bit axe or Pulaski, 3-1/2 pounds or larger. Equipment shall be kept in a serviceable condition and shall be readily available.

c. Power Saws

Each gasoline power saw operator shall be equipped with a pressurized chemical fire extinguisher of not less than 8-ounce capacity by weight, and one long-handled round point shovel, size "O" or larger. The extinguisher shall be kept in possession of the saw operator at all times. The shovel shall be accessible to the operator within 1 minute.

d. Extinguishers

One refill for each type or one extra extinguisher sufficient to replace each size extinguisher required on equipment shall be safely stored in the fire tool box or other agreed upon place on the project area that is protected and readily available.

e. Spark Arresters and Mufflers

Each internal combustion engine shall be equipped with a spark arrester meeting either (1) USDA Forest Service Standard 5100-1a, or (2) appropriate Society of Automotive Engineers (SAE) recommended practice J335(b) and J350(a) as now or hereafter amended unless it is:

- (1) Equipped with a turbine-driven exhaust supercharger such as the turbocharger. There shall be no exhaust bypass.
- (2) A passenger-carrying vehicle or light truck, or medium truck up to 40,000 GVW, used on roads and equipped with a factory-designed muffler complete with baffles and an exhaust system in good working condition.
- (3) A heavy duty truck, such as a dump or log truck, or other vehicle used for commercial hauling, used only on roads and equipped with a factory designed muffler and with a vertical stack exhaust system extending above the cab.

Exhaust equipment described in this subsection, including spark arresters and mufflers, shall be properly installed and constantly maintained in serviceable condition.

f. Emergency Fire Precautions

The SERVICE PROVIDER shall restrict operations in accordance with the Industrial Fire Precaution Levels listed below. The DNR and/or Forest Service may change the Industrial Fire Precaution Levels to other values upon revision of the National Fire Danger Rating System and may change the specific Industrial Fire Precaution Levels when such changes are necessary for the protection of the National

REQUEST FOR BID (RFB)
MOUNT SI NRCA – CCC TRAIL CONNECTION
PHASE 2

Forest. When sent to the SERVICE PROVIDER, the revised Industrial Fire Precaution Levels will supersede the attached levels.

INDUSTRIAL FIRE PRECAUTIONS SCHEDULE
LEVEL INDUSTRIAL FIRE PRECAUTION (IFPL)

Closed season: Fire precaution requirements are in effect. A fire watch/security is required at this and all higher levels unless otherwise waived.

Partial hoot-owl: The following may operate only between the hours of 8 p.m. and 1 p.m., local time:

- a. power saws, except at loading sites;
- b. cable yarding;
- c. blasting;
- d. welding or cutting of metal.

Partial shutdown - The following shall be prohibited except as indicated:

Cable yarding - except that gravity operated logging systems employing non-motorized carriages may be operated between the hours of 8 p.m. and 1 p.m., local time, when all block and moving lines, except the line between the carriage and the chokers, are suspended 10 feet above the ground;

Power saws - except power saws may be used at loading sites and on tractor/skidder operations between the hours of 8 p.m. and 1 p.m., local time.

In addition, the following are permitted between the hours of 8 p.m. and 1 p.m., local time:

- a. tractor/skidder operations;
- b. mechanized loading and hauling of any product or material;
- c. blasting;
- d. welding or cutting of metal;
- e. any other spark-emitting operation not specifically mentioned.

IV. General shutdown - All operations are prohibited.

The following definitions shall apply to these Industrial Fire Precaution Levels:

Cable yarding systems: A yarding system employing cables and winches in a fixed position.

Closed season (Fire Precautionary Period): That season of the year when a fire hazard exists as declared by the responsible agency official.

Contracting officer: The person executing the contract, permit or license on behalf of the Government and includes that person's designated representative, acting within the limits of their authority or the duly appointed successor to the individuals.

Loading sites/woods site/project area: A place where any product or material (including but not limited to logs, firewood, slash, soil, rock, poles, etc.) is placed in or upon a truck or other vehicle.

MOUNTAINS TO SOUND GREENWAY TRUST | 2701 FIRST AVENUE, SUITE 240, SEATTLE, WA 98121
PHONE 206.382.5565 | EMAIL info@mtsgreenway.org | WEB mtsgreenway.org

REQUEST FOR BID (RFB)
MOUNT SI NRCA – CCC TRAIL CONNECTION
PHASE 2

Low hazard area: Means any area where the responsible agency representative (WDNR, ORF, BIA, BLM) determines the combination of elements reduces the probability of fire starting and/or spreading.

Tractor/skidder operations: include a harvesting operation, or portion of a harvesting operation, where tractors, skidders, or other harvesting equipment capable of constructing fireline, are actively yarding forest products and can quickly reach and effectively attack a fire start.

Waivers, written in advance, may be used for any and all activities. Activities for which waivers may be issued include, but are not limited to:

- a. mechanized loading and hauling;
- b. road maintenance such as sprinkling, graveling, grading and paving;
- c. cable yarding using gravity systems or suspended lines and blocks, or other yarding systems where extra prevention measures will significantly reduce the risk of fire;
- d. powers saws at loading sites or in felling and bucking where extra prevention measures will significantly reduce the risk of fire;
- e. maintenance of equipment (other than metal cutting and welding) or improvements such as structures, fences and powerlines.

Such waiver, or substitute precautions will prescribe measures to be taken by the SERVICE PROVIDER to reduce the risk of ignition, and/or the spread of fire. The Contracting officer shall consider site specific weather factors, fuel conditions, and specific operations that result in less risk of fire ignition and/or spread than contemplated when precaution level was predicted. Consideration shall also be given to measures that reduce the precaution levels above. The SERVICE PROVIDER shall assure that all conditions of such waivers or substitute precautions are met.

The SERVICE PROVIDER shall obtain the predicted Industrial Fire Precaution Level daily, prior to the start of work, from the appropriate Ranger District headquarters or DNR Region. If predictions made after 6:00 p.m., local time, are significantly different than the original prediction, the DNR and/or Forest Service will inform the SERVICE PROVIDER when changes in restrictions or industrial precautions are made.

NOTE: The IFPL system does not apply on lands protected by ODF east of the summit of the Cascades. Where hauling involves transit through more than one shutdown/regulated use area, the precaution level at the worksite shall apply.

8. Fire Tools

The SERVICE PROVIDER shall furnish serviceable fire fighting tools in a readily accessible fire tool box or compartment of sound construction with a hinged lid and hasp so arranged that the box can be secured or sealed. The box shall be red and marked "Fire Tools" in letters one inch high. It shall contain a minimum of:

- a. 2 axes or Pulaskis with a 32-inch handle;
- b. 3 adze eye hoes. One Pulaski may be substituted for 1 adze eye hoe;
- c. 3 long-handled, round point shovels, size "o" or larger.

REQUEST FOR BID (RFB)
MOUNT SI NRCA – CCC TRAIL CONNECTION
PHASE 2

9. Fire Security

When the Industrial Fire Precautions Level is "I" or higher, unless a waiver is granted, the SERVICE PROVIDER shall designate a person who shall perform fire security services listed below on the project area and vicinity. The designated person shall be capable of operating the SERVICE PROVIDER's communications and fire fighting equipment specified in the contract, excluding helicopters, and of directing the activities of the SERVICE PROVIDER's personnel on forest fires. In lieu of having the designated person perform the required supervisory duties, the SERVICE PROVIDER may provide another person meeting the qualifications stated above to direct the activities of SERVICE PROVIDER's personnel and equipment during all fire fighting activities.

Services described shall be for at least 1 hour from the time the SERVICE PROVIDER's operations are shut down. For the purposes of this provision, personnel servicing equipment, and their vehicles, who are not engaged in cutting or welding metal are excluded.

Fire security services shall consist of moving throughout the operation area or areas constantly looking, reporting, and taking suppression action on any fires detected. Where possible, the designated person shall observe inaccessible portions of helicopter operating areas from vantage points within or adjacent to project area.

10. Blasting

Whenever the Industrial Fire Precaution Level is "II" or greater, a fire security person equipped with a long-handled, round point, No. "0" or larger, shovel, and a five-gallon backpack pump can filled with water will stay at location of blast for 1 hour after blasting is done. Blasting may be suspended by Forest service in writing, in an area of high rate of spread and resistance to control.

Fuses shall not be used for blasting. Explosive cords shall not be used without written permission which may specify conditions under which such explosives may be used and precautions to be taken.

USDA Forest Service
Fire Protection and Suppression

Additional Fire Precautionary Measure 1 - Tank Truck

The SERVICE PROVIDER shall provide a tank truck or trailer, containing not less than 300 gallons of water, during yarding, loading, land clearing, right-of-way clearing, and mechanical treatment of slash. A tank truck or trailer will not be required if powersaw falling and bucking is the only operation. Such tank truck or trailer shall be maintained in a serviceable condition and located within 10 minutes, round trip, from each project area during fire period and closed season.

The tank truck or trailer shall be equipped with a pump capable of discharging 20 gallons of water per minute, using a 1/4 inch nozzle tip, through a 50-foot length of rubber-lined hose. In addition, 500 feet of serviceable fabric jacket rubber-lined hose of not less than 1 inch outside diameter, fitted with a nozzle capable of discharging a straight stream of 1/4-inch diameter and a spray pattern shall be immediately available for use. The tank, pump, and at least 250 feet of hose and nozzle shall be connected and ready for use at all times.

REQUEST FOR BID (RFB)
MOUNT SI NRCA – CCC TRAIL CONNECTION
PHASE 2

If a trailer is used, it shall be equipped with a hitch to facilitate prompt movement. A serviceable tow vehicle shall be immediately available for attachment to the trailer and must meet the time requirements stated above. Such truck or trailer shall be equipped to operate for a minimum of 8 hours.

Tank truck or trailer shall be available from the start of work to the end of the Fire Watch/Fire Security service.

Additional Fire Precautionary Measure 2 - Communications

The SERVICE PROVIDER shall provide adequate two-way communication facilities to report a fire to DNR/Forest Service within 15 minutes of detection. FCC Regulations prohibit commercial use of Citizen Band (CB) radios. (CB's are not considered adequate two-way communications).

Such communications shall be operable during periods of operation of power-driven equipment, including the time fire security is required.