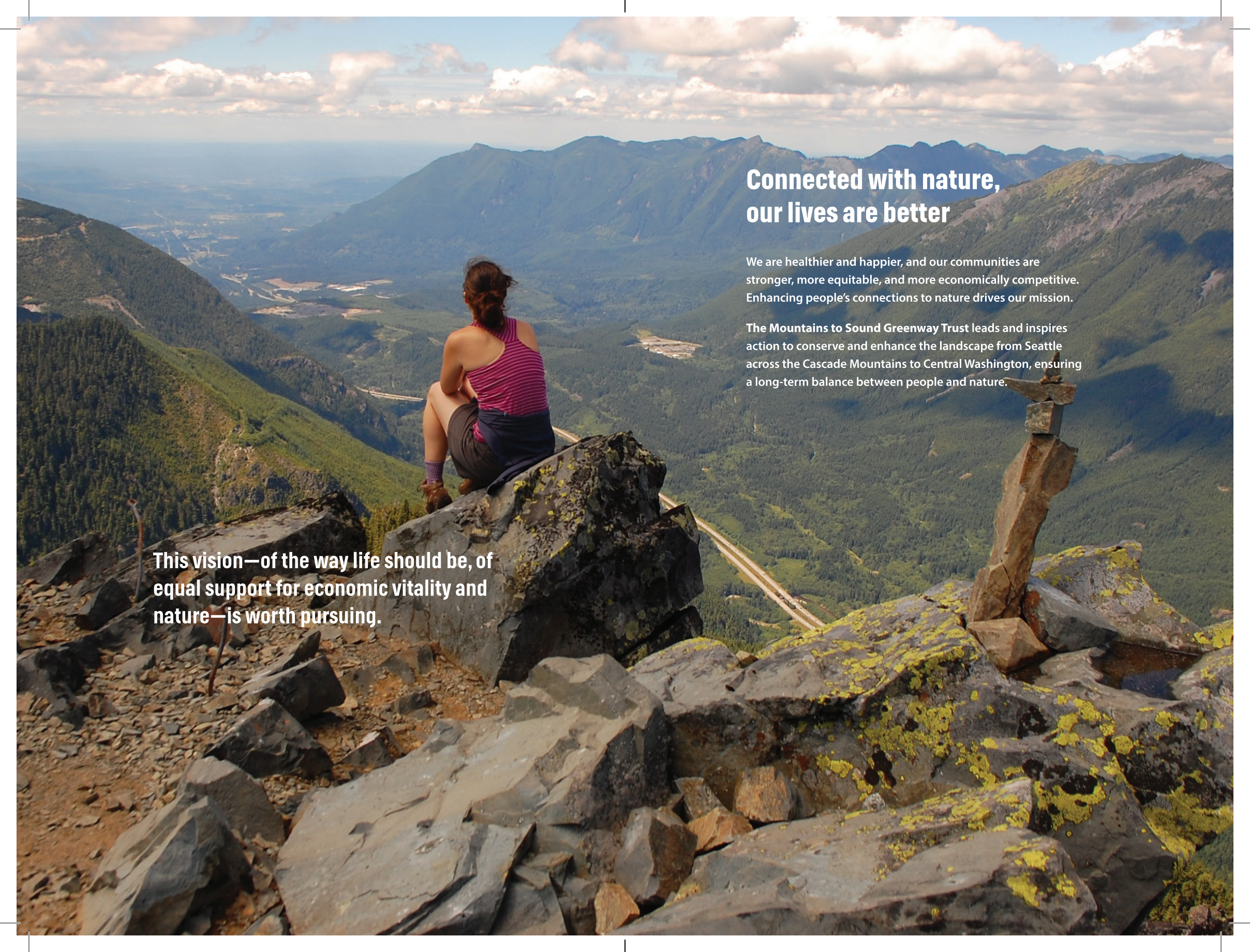




The Greenway Connects It All

JULY 2017 - JUNE 2018 ANNUAL REPORT

A person with dark hair tied back, wearing a pink and white striped tank top and dark shorts, sits on a dark, jagged rock peak. They are looking out over a vast, green valley with a winding road and distant mountains under a blue sky with scattered white clouds. The foreground shows more rocky terrain with patches of yellow lichen.

Connected with nature, our lives are better

We are healthier and happier, and our communities are stronger, more equitable, and more economically competitive. Enhancing people's connections to nature drives our mission.

The Mountains to Sound Greenway Trust leads and inspires action to conserve and enhance the landscape from Seattle across the Cascade Mountains to Central Washington, ensuring a long-term balance between people and nature.

This vision—of the way life should be, of equal support for economic vitality and nature—is worth pursuing.

Our impact in the Greenway

The 28 cities of the Greenway are enfolded by deep forests, towering mountains, and salmon-bearing streams. Residents can access nearly a million acres of public land within an hour or two of travel. This wealth of access, and its immediate proximity, are unique to this region. Its impact on Greenway communities is immense. Our natural surroundings buoy our health and happiness with clean air, clean water, and limitless outdoor activities.

The work of the Greenway Trust is built on common ground – the love we all share for this place and the desire to preserve and pass down the quality of life we enjoy today. With your support and participation, we worked this year to advance a shared vision of wise growth, sustainable land use, and equitable access so that everyone has a stake in preserving this remarkable landscape we call the Mountains to Sound Greenway.

Thank you for being a part of our ongoing efforts to balance growth and recreation with conservation. We are proud to share this annual report about the impact we had this year.



Jon Hoekstra
Executive Director

THANKS TO ALL OF OUR SUPPORTERS FOR MAKING THIS POSSIBLE

Our Year In Review

LANDSCAPES



374 *Acres in restoration*

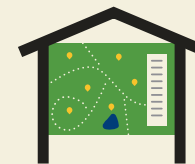


1,850+ *Acres of new public land*



28,917 *Native trees & shrubs planted*

CONNECTIONS



72 *Miles of trail maintenance completed*



\$1M+ *Recreation improvements*

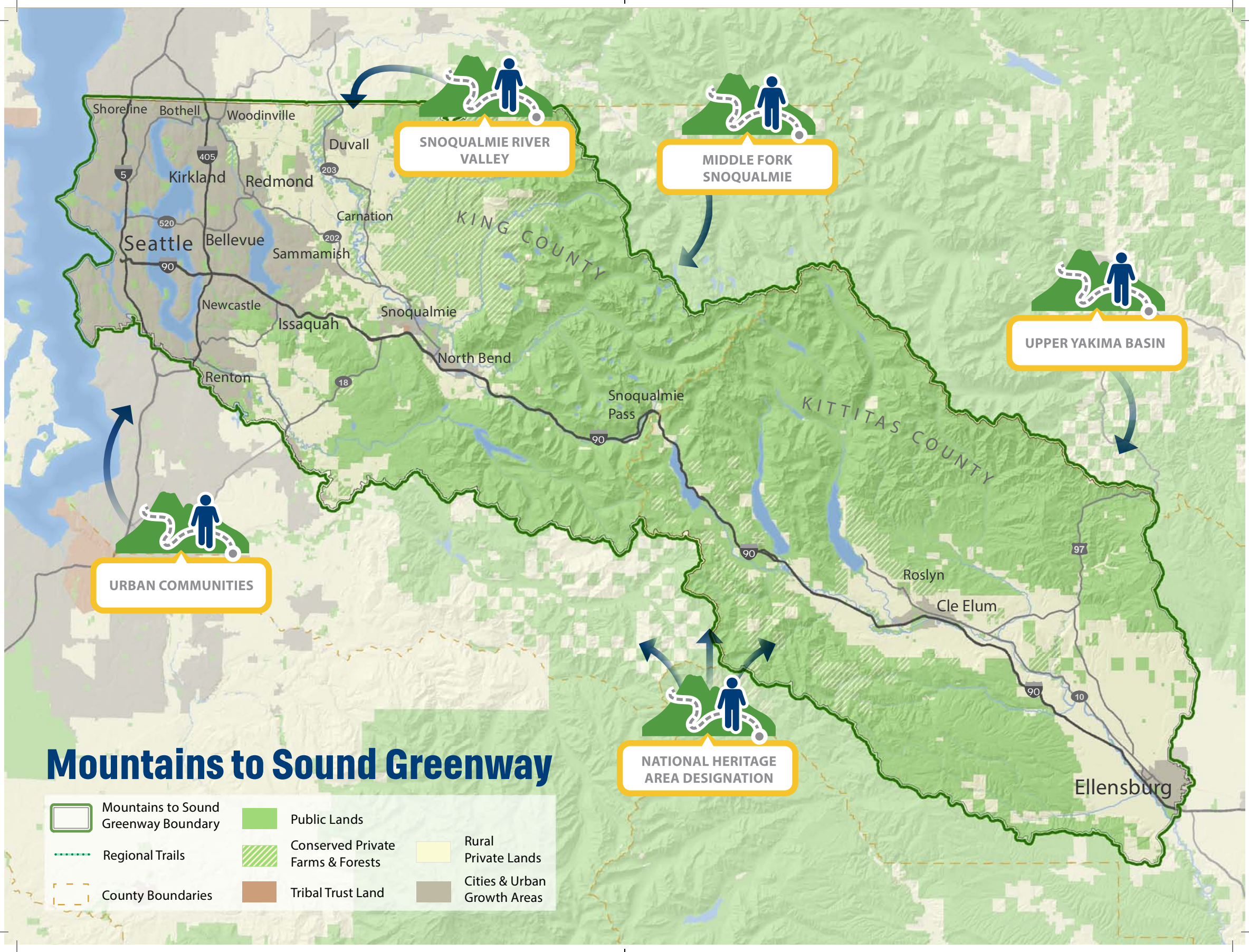
PEOPLE



4,559
People volunteered (34% youth)



3,406
Students participated in Greenway education programs



Mountains to Sound Greenway

- | | | |
|--------------------------------------|-----------------------------------|-----------------------------|
| Mountains to Sound Greenway Boundary | Public Lands | Rural Private Lands |
| Regional Trails | Conserved Private Farms & Forests | Cities & Urban Growth Areas |
| County Boundaries | Tribal Trust Land | |

OUR WORK

Urban Communities



Assembling Volunteers

More than 4,500 volunteers came together under the Greenway banner this year, restoring park lands, improving stream corridors, and increasing the vital urban canopy that cleans the air we breathe. Volunteers eradicated invasive weeds and planted native trees in heavily used natural areas like Lake Sammamish State Park and Me-Kwa-Mooks Park.

Improving Trails

The Greenway Trust works with many partners to improve the trail system within and close by the metro region. These collaborative efforts often take many years to navigate through challenges of funding and planning within densely developed areas. This was a year of major achievements by partner agencies, highlighted by renovation of High Point trailhead, paving of one of the final segments of the East Lake Sammamish Trail, a new trail over the SR 520 floating bridge, and advances in the Eastside Rail Corridor and the Bellevue gap in the Mountains to Sound Greenway Trail.



“Water is a part of our daily lives and we should understand where it comes from and where it goes. This program made me understand the importance of that.”

- Calvin La, Clean Water Ambassador



Clean Water Ambassadors

In partnership with the King County Wastewater Treatment Division, and with funding from the Boeing Company, the Greenway Trust was thrilled to offer the Clean Water Ambassadors program again in July 2017. This intensive, six-week, paid internship is available to 10 high school students from across King County. As they learned about human and natural water systems, they gained valuable field experience, honed their leadership and communication skills, and made professional connections. The summer portion has ended, but the interns are just getting started. Each intern will dedicate another 40 hours during the school year to share what they learned with their schools, families, and communities as fully-fledged Clean Water Ambassadors.

OUR WORK

Snoqualmie River Valley

Cultivating a Vision for Savor Snoqualmie Valley

Savor Snoqualmie Valley is an initiative to enhance the interconnectedness of the Valley's natural, cultural, and community resources. The Savor Steering Action Team, made up of local community leaders throughout the Valley, crafted a new strategic plan to prepare the soil and plant the seeds for future growth of this community-based initiative. Cultivating a sense of place in the Valley while connecting residents to the culture, farms, outdoor activities and locally owned businesses is vital to making a collective impact. Toward that end, a "local first" promotional campaign seeks to inspire residents and visitors to preserve history, eat local, recreate locally, support local artists and buy local. Visit savorsnoqualmievalley.org to see what's new.

Adapting to Climate Change at Stossel Creek

The Greenway Trust teamed up with Seattle City Light, Seattle Public Utilities, and the Northwest Natural Resource Group to test an innovative approach to helping local forests adapt to a changing climate. With a \$140,000 grant from the Wildlife Conservation Society, Pacific Northwest native trees sourced from southwestern Oregon are being planted in a 154-acre parcel along Stossel Creek, northeast of Carnation in the Tolt Watershed. The Oregon trees are better adapted to warmer temperatures and drier summers that are expected in our region in the next 20-30 years, ensuring resilient forests for the future.

Wayfinding Signs Making Connections in the Valley

Five newly installed wayfinding signs are making it easier than ever to navigate the 31-mile Snoqualmie Valley Trail and visit the communities of Duvall, Carnation, Fall City, Snoqualmie, and North Bend. The Greenway Trust worked with these cities and King County to install new wayfinding signs, located at the entrances to each community, help users get their bearings and easily make side trips into the downtowns.

Photo credit: Puget Sound Energy



OUR WORK

Middle Fork Snoqualmie Valley



Campaign Progress

The Greenway Trust continues to lead a coalition of 25 partner organizations working toward a sustainable balance between recreation and healthy ecological conditions in the beautiful Middle Fork Snoqualmie River Valley. After two years, the Middle Fork campaign has raised more than \$5 million in funding to develop sustainable infrastructure, access, and stewardship in the Valley. It is thrilling to see the public and private sectors coming together to invest in the future of this priceless community asset.

Growing Stewardship in the Middle Fork

With outdoor recreation on the rise, the Middle Fork can only remain wild and pristine if people are committed to its long-term care. To build a foundation for this vital stewardship, the Greenway Trust has created a staff position dedicated to the Valley. With a full-time presence established, we are now working with coalition partners and recreation groups to grow a corps of Middle Fork volunteers who will support the preservation of the Valley's spectacular natural character.



New Recreational Sites

The Middle Fork Coalition is working quickly to expand recreational infrastructure in the Valley to meet the surge in usage that will come with the new road. Trails, river-access sites, signage, and sanitation facilities are all essential to directing and absorbing heavy recreational activity and preserving the long-term quality of the Valley's wild expanse. This year saw improvements at several key sites within the road corridor, most notably a major new trailhead at Granite Creek, reconstruction of a section of the Middle Fork Trail, and a beautiful new log bridge at Pratt River Bar.



Middle Fork Road

More than 100 stakeholders came together on National Public Lands Day 2017 to celebrate the re-opening of the Middle Fork Road after three years of construction. The newly paved road opens safe, family-friendly access to the wild Valley for the first time and greatly reduces harmful erosion into sensitive wetlands.

OUR WORK

Upper Yakima Basin



Towns to Teanaway

The eastern half of the Greenway, framed by the upper Yakima River watershed, holds half the land of the Greenway, but only one percent of the population. That makes cooperation absolutely essential to get big things done. This year, the Greenway Trust worked in partnership with Kittitas County Parks and Recreation District, The Nature Conservancy, The Western Conservation Project, and local community members to complete the Towns to Teanaway Corridor trail master plan, which will connect Cle Elum, Ronald, and Roslyn via multi-use trails to the vast public lands of the Teanaway Community Forest.



Equipping Hands with New Tools

Planting trees and building trails require a lot of hard work and the right tools for the job. Thanks to a grant from the Suncadia Fund for Community Enhancement, the Greenway Trust was able to purchase a large cache of tools to equip Kittitas County staff and volunteers for recreation and restoration projects. The new tools are also available to community partners, and have already been used by Conservation Northwest, Washington Trails Association, The Nature Conservancy, the Greenway Trust, Mid-Columbia Fisheries Enhancement Group, Tamarack Trail Builders and REI to care for existing trails, construct new trail corridors, and restore riparian habitat.

Grant Funding for New Bridges

In a time when we see steadily declining funding for the agencies that care for our public lands, the Greenway Trust specializes in working with those agencies to support their ability to serve the community. Our partnership with Kittitas County produced huge success this year, as we collaborated on two Federal Lands Access Program grants, which won approximately \$5 million to repair the South Fork Manastash road and Dickey Creek Bridge, restoring safe access to the Okanogan-Wenatchee National Forest.





OUR WORK

National Heritage Area Designation

“The heritage of wilderness and history encompassed by the three major watersheds that create the Greenway boundaries, provide a unique opportunity for a strong and thoughtful connection between the built environment of a major urban area and the natural environment that provides a quality of life that is inspiring, nurturing and efficient.”

– Sue McLain, Retired Senior Vice President, Delivery Operations at Puget Sound Energy

Putting the Greenway on the Map

When we are connected with nature, our lives are better. The Mountains to Sound Greenway offers world-class recreation and spectacular open spaces on the doorstep of our urban areas. This high quality of life makes us healthier and happier, and helps attract tourism and top employers that keep our economy strong. Designation of the Greenway National Heritage Area would recognize these strengths and allow the Greenway to serve as a national model for collaborative conservation.

Campaign Progress

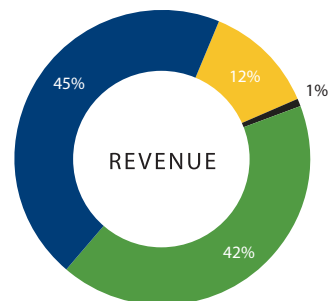
Despite a difficult political environment for land designations, legislation to establish the Mountains to Sound Greenway National Heritage Area continues to enjoy strong bipartisan support. Representatives Reichert, Smith, DelBene, and Jayapal led the way to a major step forward, as H.R. 1791 passed the U.S. House of Representatives in June. A companion bill in the Senate, S.713, has passed out of committee and awaits action on the Senate floor. The continued bipartisan cooperation and broad community support for this effort here in the Greenway give us strong hope that the Greenway will soon receive the recognition it deserves as a national treasure.



Financial Report

REVENUE

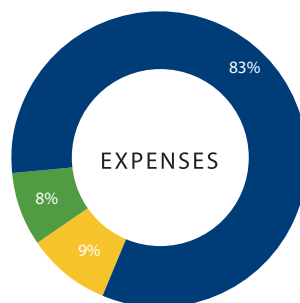
Government Grants & Contracts	\$2,019,532
Contributions	\$1,865,650
In-kind Contributions	\$557,921
Investment & Endowment Revenue	\$46,827
TOTAL	\$4,489,930



■ Government Grants & Contracts
■ Contributions
■ In-kind Contributions
■ Investment & Endowment Revenue

EXPENSES

Program Expenses	\$2,696,532
Management & General	\$275,787
Fundraising	\$284,421
TOTAL EXPENSES	\$3,256,258



■ Program Expenses
■ Management & General
■ Fundraising

NET ASSETS - BEGINNING OF YEAR	\$1,753,820
NET ASSETS - END OF YEAR	\$2,987,492
CHANGE IN NET ASSETS*	\$1,233,672

*Restricted Middle Fork, project restricted, and pledged in-kind

Board of Directors

PRESIDENT

Tod McDonald *
Co-founder, Valid8 Financial

PRESIDENT ELECT

Eric Artz *
EVP/COO, REI Co-op

IMMEDIATE PAST PRESIDENT

Kurt Fraese *
Fraese and Associates, LLC

FOUNDING PRESIDENT

Jim Ellis
Chairman Emeritus, Washington State Convention Center

SECRETARY

Josh M. Lipsky*
Partner, Cascadia Law Group PLLC

TREASURER & OPERATIONS

COMMITTEE CHAIR

Jason Broenneke *
Partner, KPMG

FUNDRAISING COMMITTEE CHAIR

Ken Krivanec *
President, Quadrant Homes

BOARD ENGAGEMENT COMMITTEE CHAIR

Marie Quasius *
Attorney, K&L Gates LLP

PROGRAM COMMITTEE CHAIR

Doug McClelland **
Former Assistant Region Manager, Washington State Dept. of Natural Resources

EXECUTIVE DIRECTOR

Jon Hoekstra *
Mountains to Sound Greenway Trust

Erin Anderson
Partner, Stoel Rives LLP

Sally Bagshaw
Councilmember, Seattle City Council

Jim Becker
Retired, Founder, Smartlab Toys and becker&mayer!

Laurie Benson*
Assistant Region Manager, Washington State Dept. of Natural Resources

Gary Berndt

Wildland Fire Liaison, Washington State Dept. of Natural Resources

Mark Boyar *

President, Middle Fork Outdoor Recreation Coalition

Kevin Brown

Director, King County Parks & Recreation

Susan Carlson

Board Chair, E3 Washington

Bill Chapman *

Former President, Mountains to Sound Greenway Trust

Dow Constantine*

King County Executive

Kitty Craig

Deputy Director, Washington Program, The Wilderness Society

Karl Forsgaard

Manager of Implementations, Thomson Reuters; Alpine Lakes Protection Society

Hilary Franz*

Commissioner of Public Lands, Washington State Dept. of Natural Resources

Ava Frisinger

Former Mayor, City of Issaquah

Kari Glover

Retired, Former Global Integration Partner, K&L Gates

Don Hoch *

Director, Washington State Parks & Recreation Commission

Laura Hoffman

Senior Director, Microsoft; Copper Ridge Farm

Angela Jin

Community Wrangler, Automatic Inc.

Cora Johnson

Geotechnical Engineer, GeoEngineers

Andrew Kenefick

Senior Legal Counsel, Waste Management of Washington

Jamie Kingsbury *

Supervisor, USFS Mount Baker-Snoqualmie National Forest

Janet N. Knox

Principal Environmental Geochemist, Pacific Groundwater Group

Ken Konigsmark

Issaquah Alps Trails Club

Yvonne Kraus

Executive Director, Evergreen Mountain Bike Alliance

Danny Levine

President, NationAd Communications

Sharon Linton

Marketing Consultant, SL Connects

Lorna Luebbe*

Assistant General Counsel/Director, Environment Program Services, Puget Sound Energy

Elizabeth Lunney

Former Greenway Trust Executive Director

Robert Manelski

Senior Director, 787 Program, The Boeing Company

Gordon McHenry, Jr. *

President & CEO, Solid Ground

Roger Millar*

Secretary of Transportation, Washington State Dept. of Transportation

Chad Nesland

Director, Microsoft Procurement

Mary Norton

Meadowbrook Farm Preservation Association

Thomas O'Keefe

Pacific NW Stewardship Director, American Whitewater

David Patton

Northwest Area Director, The Trust for Public Land

Julia Parrish

Associate Dean of Academic Affairs, College of Environment, University of Washington

Kizz Prusia

Project Associate, Triangle Associates

Charles Raines

Director, Cascade Checkerboard Project, Sierra Club

Janet Ray

Assistant VP, Corporate Affairs & Publishing, AAA Washington

Jim Reinhardsen *

Principal & Senior Managing Director, HEARTLAND

Floyd Rogers

Environmental Advocate

Vik Sahney

The Mountaineers; American Alpine Club

Jill Simmons

Executive Director, Washington Trails Association

Al Smith

Partner, Perkins Coie

David Sturtevant

Retired, Former Vice President, CH2M

Maryanne Tagney

Community at Large Representative

Chris Thomas

Senior Vice President, WSP USA

Harry Thomas

Chief Marketing Officer, AAA Washington

Leah Tivoli

Manager, City of Seattle

Mike Williams*

Supervisor, USFS Okanogan-Wenatchee National Forest

Kathy Williams

Retired, Former Senior Vice President, HomeStreet Bank

Joel Yoker

Principal Program Manager, Microsoft, Snoqualmie Valley Youth Activities & Community Center

* Executive Committee Member
X Ex-Officio (non-voting) Director



Photo credit: Ray Lapine

Board of Advisors

Claudia Balducci
Councilmember, District 6,
King County Council

Jim Berry
Community at Large
Representative, Sammamish

Steve Brand
Partnerships and Planning
Program Manager,
Washington State Parks

Michelle Capp
District Ranger,
USFS Cle Elum District

Will Castillo
Principal, GGLO

John Chelminiak
Mayor, City of Bellevue

Alan Coburn
President & CEO,
Green Trails Maps

Jim DeVere
Mayor, City of South Cle Elum

Jan Drago
Former Councilmember,
City of Seattle

Reagan Dunn
Councilmember, District 9,
King County Council

Dr. Eric Friedland
Emergency Medicine Physician,
Overlake Hospital

Leonard Garfield
Executive Director,
Museum of History & Industry

Tom Gibbs
Retired, Former Vice President,
CH2M

Paul Graves
Washington State Representative,
5th District, (R)

Kenneth Hearing
Mayor, City of North Bend

Ron Judd
External Affairs Director,
Washington State Dept. of
Transportation

Jeanne Kohl-Welles
Councilmember, District 4,
King County Council

Leon Kos
Retired, Former City
Administrator, City of Issaquah

Trevor Kostanich
Councilmember,
City of North Bend

Kathy Lambert
Councilmember, District 3,
King County Council

Matt Larson
Mayor, City of Snoqualmie

Arlene Levy
Partner, Social Venture Partners

Mike Livingston
Regional Director, Washington
Dept. of Fish & Wildlife

Christie Malchow
Mayor, City of Sammamish

Joe McDermott
Councilmember, District 8,
King County Council

Dan McDonald
Former State Senator

Jay McGowan
Mayor, City of Cle Elum

Mark McIntyre
Chief of Staff, Seattle Metro.
Chamber of Commerce

Julie Meredith
Program Administrator,
Washington State Dept. of
Transportation

Mark Mullet
Washington State Senator,
5th District, (D)

Obie O'Brien
Kittitas County Commissioner

Laura Osiadacz
Kittitas County Commissioner

Larry Phillips
Former Councilmember,
King County Council

Martie Schramm
District Ranger, USFS
Snoqualmie District

Ron Sher
CEO, Sher Partners

Peter Spiro
Former Technical Fellow,
Microsoft

Julie Stangell
Consulting Forester &
Environmental Auditor

Dan Stroh
Planning Director,
City of Bellevue

Todd Trepanier
Regional Administrator,
Washington State Dept.
of Transportation

Kurt Triplett
City Manager, City of Kirkland

Justin Vander Pol
Evergreen Mountain
Bike Alliance

Jason Walker
Councilmember,
City of Duvall

Glenn Wallace
President, King County
Search and Rescue

Todd Welker
SE Region Manager,
Washington State Dept. of
Natural Resources

Dan Youmans
Retired, Former Regional VP,
External Affairs, AT&T

DONATIONS RECEIVED JULY 2017 - JUNE 2018

Thank You Donors

The Greenway Trust gratefully acknowledges the individuals, businesses, and foundations that generously support our work across the Mountains to Sound Greenway.



MIDDLE FORK SNOQUALMIE CAMPAIGN LEAD DONORS

We are seeking to raise \$20 million to create recreational infrastructure and cooperative management in the Middle Fork, ensuring a sustainable future for the wild, 110,000-acre valley. To join the effort, contact Michael Woodsum.

\$1,000,000
REI Co-op

\$300,000
The Nordcliff Foundation
Wyncote Foundation NW

\$25,000
Peach Foundation

\$250,000
The Boeing Company
Greg Smith

\$19,000
Fred R. Smith Foundation

GREENWAY VISIONARIES

\$25,000+
Anonymous
Jim Ellis
The Ted and Gretchen Thomsen Family

\$10,000-\$24,999
Anonymous
Jon Hoekstra and Jennifer Steele
Arlene Levy
Sam Franklin
Allan and Inger Osberg
Jerry Stritzke
Maryanne Tagney and David Jones
Walker Family Foundation
Robert Wiley
Kathy Williams

\$1,000-\$2,499
Anonymous
Bangs Family Fund
Daniel and Pamela Baty
Andy and Betsy Baur
Alan and Sally Black
Marjorie Bombar
David Bowermaster and Annie
Livingston
Herbert M. Bridge & Edie Hilliard
Amy and Andreas Brockhaus
Kevin Brown
Cliff and Pauline Cantor
Susan and Eric Carlson
Will Castillo and Beth Dwyer
Karen Collins
Jennifer and Chuck Creveling
Stephanie Dunlap
John and Doris Ellis
Kim and Scott Fancher
Don and Carol Gagne
Vanessa Gemmell
Todd and Rhonda Glass

\$5,000-\$9,999
Jim and Barbara Becker*
Mark Boyar and Gretchen Weitkamp
Fred and Joan Burnstead
Jeffrey and Eleanor Freeman
Kari Glover and Thaddas Alston
Jim and Bonnie Reinhardson *
Floyd and Judy Rogers*
Ron and Eva Sher
Brogan Thomsen

GUARDIANS OF THE GREENWAY

\$2,500-\$4,999
Anonymous
Eric and Katie Artz
Jason and Elizabeth Broenneke
Virginia Coe and Michael Garland

Kurt and Roberta Fraese
Charles and Jean Gibbs
Lynn Hubbard and David Zapolsky
Andrew and Polly Kenefick
Nancy Lomneth and Mark Boyd
Bob and Deanna Manelski
Craig McKibben and Sarah Merner
Sue McLain and Steve Persing*
John and Harriett Morton
Chad and Wendy Nesland
Al Smith and Barb Potashnick
George and Bonnie Zinn

\$500-\$999
Anonymous
Alan and Cheryl Ameche
Heather Andersen and Mike Cowden
Robyn and Chris Ashton
Shauna Balderson
Shiv and Kamlesh Batra
Chris Bauer
Tom Bayley
Jennifer Beatty
Jim Berry
Black Family Foundation
John and Maria Bliss
Candace Smith and Steve Bolliger
Brad Brickman
Chris and Jackie Carr
Katherine Carroll
David Chapman
Stacy Chevalier Jones and Bryan Jones
Bryan Cohen
Bob and Muffie Cohen
Fran and Gerry Conley
Cindy and Bill Dickey
John and Julie Duggan
Lynn and Mark Erickson
Alison Evans
Mary Evans and Steven Maggi
Ava and Bill Frisinger*
Rosalie Gann
Tracy Garland
Susan and Gerry Gellatly
Hayley and Casey Goelzer
Slade Gorton
Matthew Grimm
Josh Harris
Susan Hill



"I support Mountains to Sound Greenway Trust because it's important to help ensure that future generations continue to have access to beautiful lakes, rivers, and mountains in Seattle's backyard."

- Sam Franklin, Founder and CEO, Greenvelope

Sherry and Andrew Jaqua
 Rudal Jenkins
 Deborah Jensen and Steve Malloch
 Angela Jin and Dane Odekirk
 Mark Johnson
 Cora and Brian Johnson
 Beth and Steve Kahn
 Judy Kalb
 Trevor Kostanich and Emily Larson
 Marjorie Levar
 Russ Levy
 Rik and Jennifer Lewis
 Rachel Ligtenberg
 Sharon and Bill Linton and Family
 Josh Lipsky and Laura van Dermoot Lipsky
 David Lomet
 Lorna Luebbe
 Elise Lufkin
 Lindsay Malone and Gabriel Deal
 Hilary and Pat McDevitt
 Gordon McHenry, Jr and Dorina Calderon-McHenry
 Mark McPherson and Brandith Irwin
 Marla Mellies
 Anthony Miles
 Roger and Candi Millar
 Lee Mullin
 Henry Mustin and Laura Lippman
 Paul Neutz and Nicole Burnett
 Margaret Newsom
 Dan Nickel
 Eric Noreen
 Lois North
 Peter and Laura Orser
 Ben Packard
 Kathy Patrick
 Debby and Brian Peterman
 Terry Pottmeyer and Geoff Trowbridge
 Janet and Terry Ray*
 Joan and Donald Roberts
 Steven Rogers and Shelly Hall
 Ron Roseman and Liz Thomas
 Miya Schneider and Sam Birch
 Kim Schrier and David Gowing
 Eric Schuehle
 Lori Seabright

Matt and Jennie Shaw
 Rupali and Rajesh Sheth
 Jill Simmons
 Julie Stangell and George Bennett
 Robert and Jennifer Stephenson
 Robert and Mary Terrell
 Chris Thomas*
 Keehn Thomsen
 Leah Tivoli and Bryan Reeves*
 Margaret Ullman-Hess and Eric Hess
 Monty and Lori VanderBilt
 Catherine Walker and David Fuqua
 Bill and Nancy Way

\$250-\$499

Melissa Adams
 John and Lissa Baier
 Sonia and Kendall Baker
 Teri and Mike Barnett
 Jake Bartholomy and Justin Goodman
 Douglas and Maria Bayer Foundation
 Laurie Benson and Ondrej Sklenar
 Katie and Thomas Bezanson
 Charles Bingham
 Connie Blumen
 Jim and Patti Bower
 Steve Boyer and Reri MacLean
 Jennifer and Christopher Brenes
 Joan Caine
 Beverly and John Carey
 Beth and Jeff Cassens
 Scott Chamberlin and Kierstin Swanson
 Hugh and Nicole Chang
 Bill and Frankie Chapman
 Helen Cherullo
 David Clodfelter and Leslie Norton
 Kenneth Colling
 Ted and Patricia Collins
 Charitable Trust
 Patrick and Pamela Cone
 Priscilla Cook
 Debra Dahlen and Robert Fries

Karen Daubert and Jared Smith
 Roy and Lori Dereg
 Mackenzie Dolstad and Dr. Shawnti Rockwell
 Mike Dunning
 Richard and Janet Eichler
 Delmar and Sandra Fadden
 Debra and Andrew Fitzpatrick
 Karl and Mary Forsgaard
 Carolyn Foster and Tyler Licata
 Debbie Frame
 Jon and Cynthia Franklin
 Paul Fredlund
 M.T. Friedman and H. M. Loeb
 David Fujimoto
 Alden Garrett
 Bonnie and Jeffrey Geers
 Sandra and Wally Goelzer
 Mike Goldade
 Steven Gott
 Jeff Gottlieb
 Jen Gradisher and Kay Sadowitz
 Richard Grillo
 Will Hall and Laurie Lindblad
 Marsha Hanson
 Lisa Heilbron and John Platt
 Kelly and Andrew Heintz
 Don Hoch
 Donald Hoekstra
 Jules Hughes
 The Inks Family
 Sally and Warren Jewell
 Mark Johnsen
 Brent Jones
 David Kappler and Ann Fletcher
 Jamie Kingsbury
 Anne Knight and Jerry Arbes
 Hanuma Kodavalla
 Margaret and Tony Laliberte
 Richard Lander
 Sara Leverette
 Fred Lunke
 Elizabeth Lunney
 Peter and Linda Machno
 Alfred and Peggy MacRae
 Abby and Lance Mansfield
 Kevin McDonald
 Dan and Janie McDonald
 Rick McGuire
 William McQuinn Jr and Kay Crampton

Matt and Melinda Mechler
 John and Lisa Merrill
 Brock Millern
 Emily Moon
 David Myre, Jr
 Laurie Needham
 Todd and Mary Nelp
 Stephanie Nelson and Kendall Magnuson
 Tim Noonan and Julie Conklin
 Eric Norelius
 Rebecca Norlander
 Laura O'Hara and David Gustafson
 Yvonne and Dennis O'Leary
 Kortney Okura and Maureen Kennedy
 John Owen
 Alan Painter
 Sachin and Suyash Panwalkar
 Wendy Parslow
 Mary Lou Pauly
 Eriann Pearson
 Larry Phillips
 Sandra Prescott
 Steve Reents
 Matthew Reid-Schwartz and Sara Nickerson
 Jim Roth and Marti McGinley
 Karen Ruppert
 Linda Rusch and Douglas Greenswag
 Gabriel Saucedo
 Mike Schaefer
 Allyson Schrier
 Abhishek Sharma
 Craig and Yumi Sherman
 John Sherwin
 Pat Siggs
 Kristina Sigloh and Chris Allen
 Steve Small
 Gerald Smith
 Elizabeth Swanson
 Jason Sykes
 Jen and Clint Syrowitz
 Jennifer Tada
 Kathryn Terry
 Steve and Terri Thomas
 John Traeger
 Teresa and Galen Trail
 Christie True and Lawrence James
 Prasad Ullal
 Marta and Wayne Ullman

Thomas Vogl
 Scott and Marion Vokey
 Jason Walker and Pamela Schlenburg
 Glenn Wallace
 Andy Wappler
 Walter Watts
 Wendy Weiker
 Bill and Audrey Weitkamp
 Ray and Judy Williams
 Carl Wilson and Kathleen Smith
 Kristine and Patrick Wilson
 David Woolley-Wilson
 Spencer and Erika Wutherich
 Ann Wyckoff
 Kathy Young
 Mona Yurk
 Tjaard and Gabriele Zwaagstra
 Michael and Sonia Zwilling

\$125-\$249

Anonymous
 Janet Adams and Joe King
 Karen Anderson
 Virginia Anderson
 Craig Antliff-Mitchell
 Johannes Ariens
 Greg and Lois Arms
 Leslie Aungst
 Bob Aye and Carol Hunter
 Sally Bagshaw
 Dan and Linda Baker
 Pauline Bariola
 Dean Batten
 James Benson
 Marc and Marcy Berejka
 Kathy Biever
 Janet and Charlie Bird
 Graeme and Cathryn Blake
 Jay Blazey
 Ross and Brenda Bogue
 Wayne and Mary Booth
 Scott and Annette Bowen
 Jay Bower
 Mark Bowman
 Tom and Mary Brucker
 Philip Buckner
 Veronica Burgess
 Steven Burke
 joan burlingame
 Jim Buss
 Patti Carroll
 Rick Chapman

Ed and Rosemary Harrell
 Tod and Deborah Harrick
 Kathryn Haupt
 Michelle Haves
 Guy Haycock
 Catherine Hayes
 Michael and Angela Heald
 Quintin and Debbie Hess
 Adam Hinz
 Helen Hoenig
 Mark and Katherine Hughes
 Sally Hulsman
 Jon Jensen
 Bradley Johnson
 Mike Jonson
 Joanne Kalas
 Raquel Karls
 Nancy Keith
 Bob and Sarah Kettle
 Margaret Kilbourne-Brook
 Paul Kistner
 Jeff Klemann
 Brian and Ginger Knox
 Rebecca Koladycz
 Leon and Kathryn Kos
 Leone Kraus
 Pierre LaBarge
 Ms. Terry Lavender
 Michael Lazarus
 Glenn Leask
 Monica Leers
 Tracy Lehfeldt and Gregory Ehlinger
 Alan Levy
 Peter Linton
 Mike and Nancy Livingston
 Julien Loh
 The Luna Family
 Greg Mackay
 Scott and Jean Manning
 Linda Maxson and Toby Miller
 Zachary McBride
 Chris and Laura McCall
 Mike and Janelle McCarty
 Mary Beth McGee

Renate McVittie
 Jennifer and Chris Meeker
 Brian Meyers
 Patrice Miner
 Tim Morgan
 Kathryn Moxley
 Dave and Susan Mozzone
 Terry Mutter
 Ken Myer
 Bob Myrick
 Mary and Jeffrey Nakasone
 Jay Naylor
 Karen Nelson
 Kate Neville
 Emily Newcomer
 Elizabeth Nitze
 Keith Niven
 Alexander Novos
 Chris O'Connor
 Dr. David and Rosemary O'Hara
 Simone Oliver
 Susan Olson
 Gordon Orians
 Ralph and Peggy Owen
 Chris Pallemarts
 Richard and Sally Parks
 Patti Paxton Eberts and Lindsay Eberts
 Amy and Jens Perrin
 Judith Peterick
 Alanna Peterson
 Dave Peterson
 Kathleen Pierce
 Tom and Dixie Jo Porter
 Claudia Post
 Tom Pozarycki
 Susan Price and Scott Springer
 Homer and Sue Anne Purdy
 Troy and Corina Rahmig
 Sandra Reeves
 Karl Reinsch
 Ed and Linda Richmond
 Valerie Rowe
 Jim and Marcia Rupert

Sal Russo
 Mike Schlafmann
 Virginia Senear
 Mike Sharpe and Elizabeth Dunlap
 John and Maureen Shaw
 Sasha H. Shaw
 Gary Sheneman
 Jessica Smith
 Megan Smith and David St. John
 Robert Smith
 Matthew Snider
 Kurt Sorensen
 Jim and Alcanne Stanton
 Patrick Stephens
 Chriss Stephens
 Douglas Stewart
 Dan Stonington
 Chris and Suzanne Sumi
 Stephen Tan
 Lyndi Thompson
 Ellen Thomson
 Roger Thorson

Paul and Tina Townsend
 Michael and Jane Traffalis
 Marisa Tychon
 Sue VanLeuven
 Robert and Pamela Verginia
 Tim and Evelyn Vinopal
 Janet Wall
 Michelle Wernli and John McGarry
 Dave and Jean White
 Charles Wilkinson and Melanie Ito
 Janet Wilson and David Dunnington
 John and Alcanne Woods
 Carla and Doug Woodworth
 Dan and Sherri Youmans
 Jeanne Yu and Paul Johnson
 Robert and Marne Zahner

*Middle Fork Campaign Donor



Organizational Support

\$100,000+

The Boeing Company
 Carter Subaru
 REI Co-op

\$25,000

Microsoft Corporation

\$10,000 - \$24,999

AAA Washington
 Greenvelope
 Grousemont Foundation
 James M. Cox Foundation
 Marie and Walter Williams Fund
 Potelco
 Rose Foundation
 Treeline Foundation

\$5,000 - \$9,999

Cascadia Law Group
 Heartland*
 Hugh and Jane Ferguson Foundation
 Huntington Steele

Norman Archibald Charitable Foundation
 Paracle Advisors
 Perkins Coie
 Quadrant Homes
 Sterling Realty Organization
 Waste Management of Washington, Inc

\$1,000-\$4,999

The Arbutus Family Foundation
 Asplundh Tree Expert Company
 BlackRock, Inc.
 CH2M
 Eastside Runners
 Fred R. Smith Foundation
 GeoEngineers, Inc.
 Google
 Green Trails Maps
 HomeStreet Bank
 K&L Gates
 KPMG
 Liberty High School DECA

NAI Puget Sound Properties
 The Nature Conservancy
 Nordstrom Inc.
 One Tree Planted
 Ordinary People Foundation
 Port Blakely
 Puget Sound Energy
 Puget Sound Energy Foundation
 Recology CleanScapes
 The Seattle Foundation
 Shelter Holdings
 Suncadia Fund for Community Enhancement
 Thomson Reuters
 The Trust for Public Land
 Unico Properties

*Middle Fork Campaign Donor

IN-KIND SUPPORT

Annie's Art and Frame
 Green Trails Maps
 Heartland
 Homegrown Partners
 Janet and Charlie Bird
 Jones & Jones
 Architects+Landscape
 Architects+Planners
 Merrill Images
 Middle Fork Roasters
 Perkins Coie
 REI Co-op
 Ste. Michelle Wine Estates
 Valley Camp

TRIBAL, PARTNER, AND AGENCY SUPPORT

Children's Garden School
 City of Carnation
 City of Issaquah
 City of Mercer Island
 City of North Bend
 City of Seattle
 City of Snoqualmie

King Conservation District
 King County
 King County Flood Control District
 Mt. Baker-Snoqualmie National Forest
 National Environmental Education Foundation
 National Fish and Wildlife Foundation
 National Forest Foundation
 Okanogan-Wenatchee National Forest
 Rowley Properties
 Snoqualmie Indian Tribe
 Washington State Department of Commerce
 Washington State Department of Natural Resources
 Washington State Parks & Recreation Commission
 Washington State Recreation and Conservation Office
 Wildlife Conservation Society



PLANNED GIVING

Thank you to those who choose to make the future of the Mountains to Sound Greenway a part of their personal legacy.

\$780,000

Ted and Gretchen Thomsen

Thomsen Family, left to right: Webb, Brogan, Gretchen, Ted, Keehn, and Burch



**Visit mtsgreenway.org for the full
version of our annual report.**

2701 First Ave, Suite 240, Seattle WA 98121
206.382.5565