

# TOWNS TO TEANAWAY WINTER TRAILS

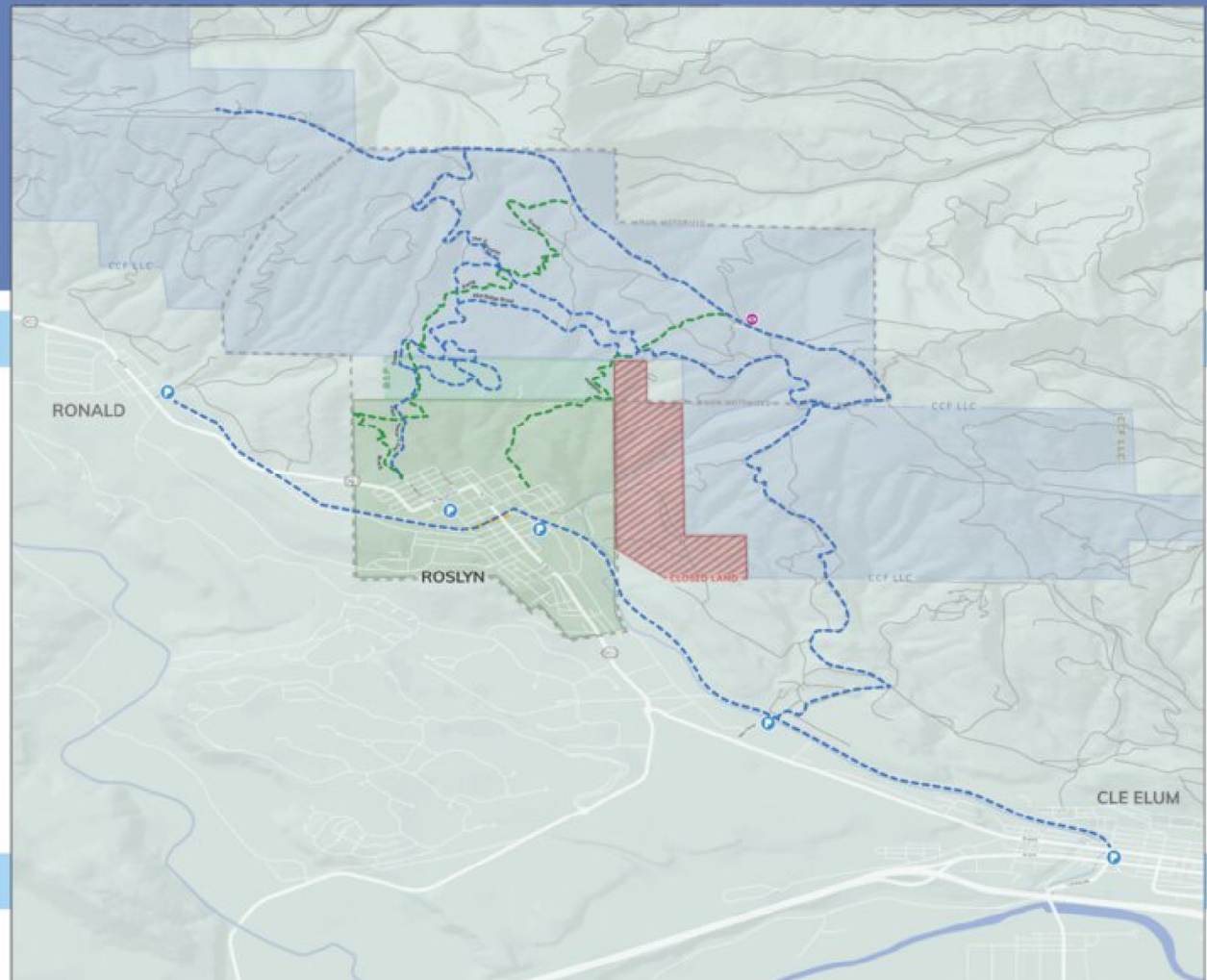
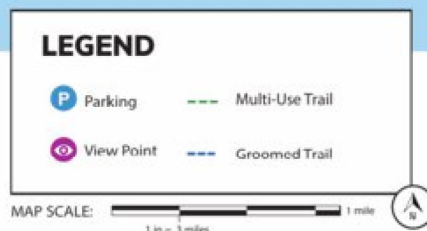
Version Beta A / Published 7/15/19

Welcome to the Towns to Teanaway Trail System. Connecting the towns of Roslyn, Cle Elum, and Ronald, this network is partially complete and will evolve as trails are built, decommissioned, and other land management initiatives such as prescribed fire and logging are implemented.

Also note that there will be summer and winter versions of the map available. Winter trails are groomed (snow coverage permitting) from December 1<sup>st</sup> – March 30<sup>th</sup>. This is a BETA version of the map. Please send comments to [kprdp2@gmail.com](mailto:kprdp2@gmail.com).

The network crosses multiple private properties. In order to ensure continued public access please respect the land by following these rules:

- No Motorized Use
- No E-Bikes
- Snowmobiles only on designated trails
- Horses only on designated trails
- Bikes yield right of way to hikers and skiers
- Please stay on designated trails.
- Leave No Trace



PROJECT SPONSORS:



The Nature Conservancy

