



Land Management Collaboratives of Kittitas County



WHO/WHAT ARE THEY?

WHY ARE THERE SO MANY?

CAN THEY BE STREAMLINED?



Nicky Pasi – Mountains to Sound Greenway Trust
Upper Yakima Basin Community Coordinator

Seriously,
there are just...so many

Collaboratives

East
Cascades
Recreation
Partnership

Kittitas
Stewardship
Fund

Kittitas
County Parks
and
Recreation
District 1

Yakima Basin
Integrated
Plan

Towns to
Teaway

Public Lands
Advisory
Committee

Tapash
Collaborative

Teaway
Community
Forest
Advisory
Committee

I-90 Projects

Public
Development
Authority
(maybe)

Checkerboard
Partnership
Program
Committee

Central
Cascades
Winter Rec
Coalition

SORTED BY CHIEF PURPOSE:

Manage specific landscape:

Teanaway
Community
Forest
Advisory
Committee

Checkerboard
Partnership
Program
Committee

I-90 Projects

Fundraising/Education:

Kittitas
Stewardship
Fund

Provide/maintain rec infrastructure or access:

Kittitas
County Parks
and
Recreation
District 1

Public
Development
Authority

Towns to
Teanaway

East
Cascades
Recreation
Partnership

Central
Cascades
Winter Rec
Coalition

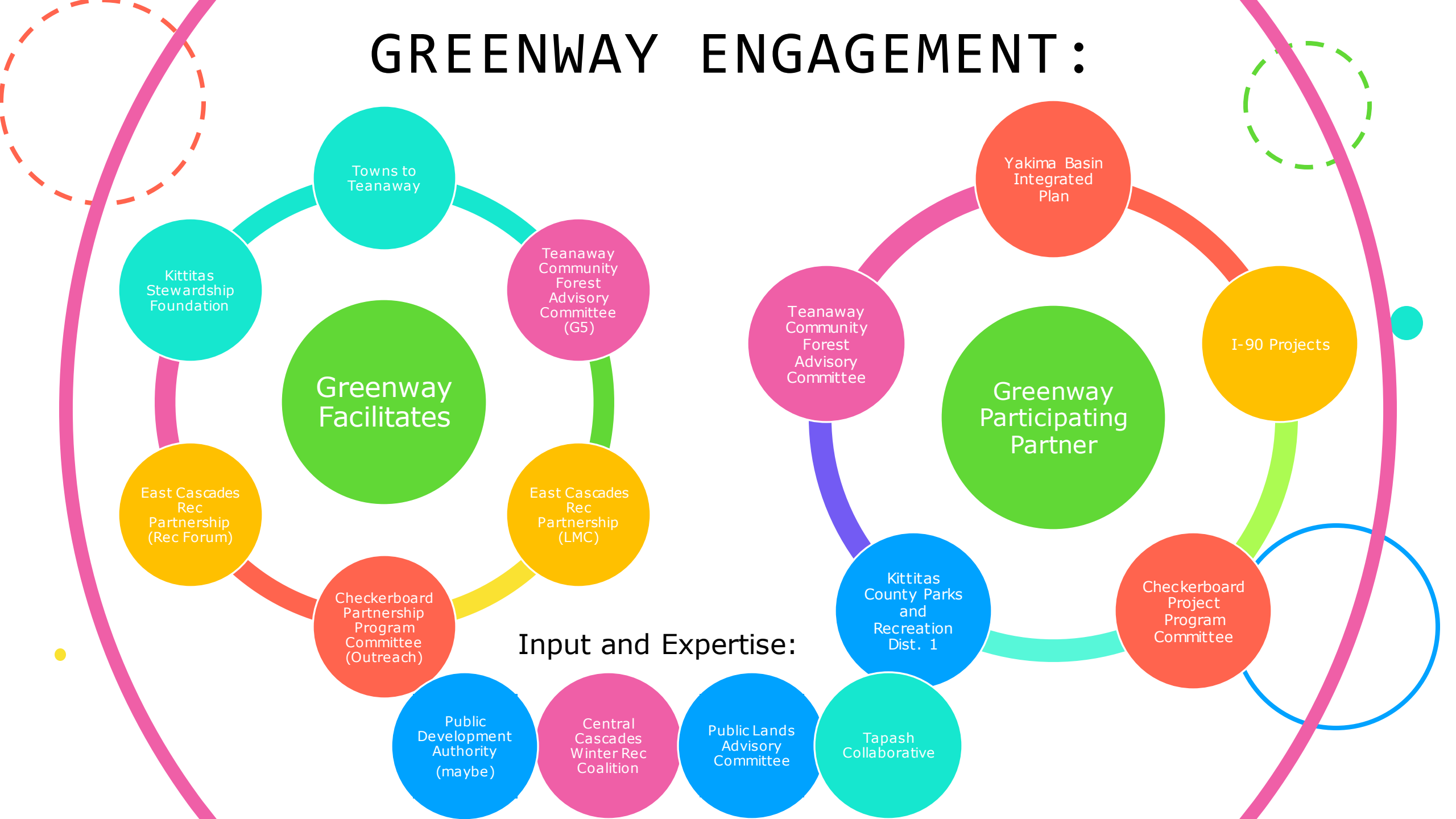
Public Lands
Advisory
Committee

Holistic Resource Strategies

Tapash
Collaborative

Yakima Basin
Integrated
Plan

GREENWAY ENGAGEMENT:



Upper Yakima Basin

Private

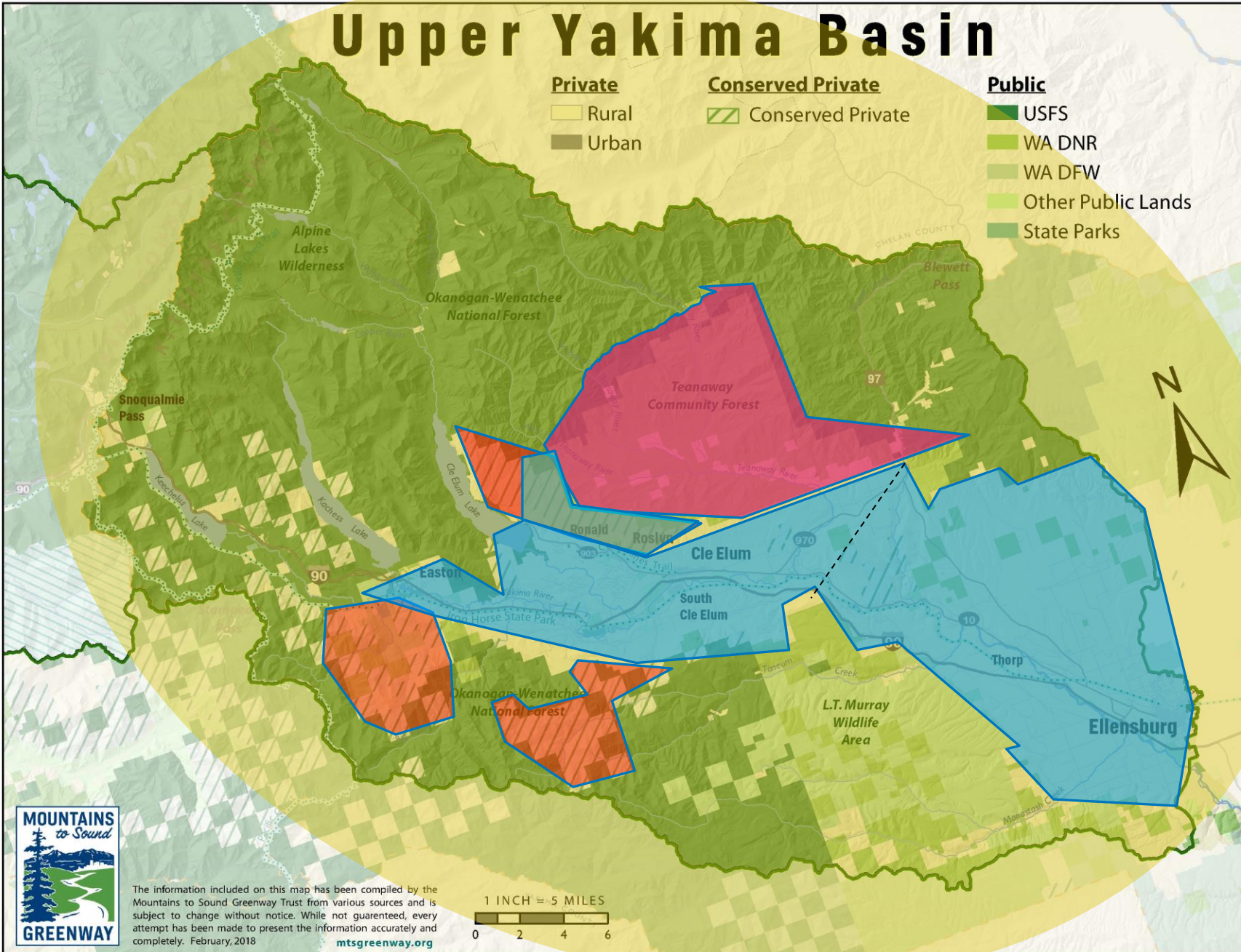
- Rural
- Urban

Conserved Private

- Conserved Private

Public

- USFS
- WA DNR
- WA DFW
- Other Public Lands
- State Parks



The information included on this map has been compiled by the Mountains to Sound Greenway Trust from various sources and is subject to change without notice. While not guaranteed, every attempt has been made to present the information accurately and completely. February, 2018
mtsgreenway.org

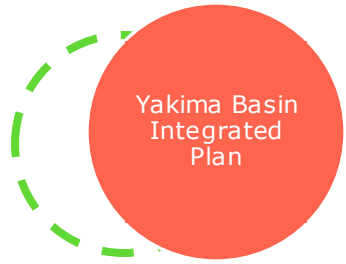
WHERE DOES GEOGRAPHY OVERLAP?

Some management very separate:

- TCFAC
- Checkerboard
- KPRD 1

But some needs cross borders:

- Same volunteer pool
- Same fundraising pool



YAKIMA BASIN INTEGRATED PLAN

Goal: 30-year plan to establish reliable and sustainable water supply for the Yakima Basin's fish, farms, and forests.

Authority: Authorized by WA legislature and, as of 2019, federal gov. Largely represented by WA Dept of Ecology and USDA Bureau of Reclamation

Active Projects:

- Fish passage
- Fish habitat enhancement
- Modifying existing irrigation structures and operations
- Surface storage
- Water market-based reallocation (water banks)
- Groundwater storage
- Enhanced water conservation



EAST CASCADES RECREATION PARTNERSHIP

LAND MANAGERS COALITION

The ECRP Land Manager Consortium is comprised of decision-makers from the public land management agencies in Kittitas County, guided by a MOU that establishes roles and responsibilities.

MEMBERS:

USFS, BLM, Yakama Nation, DNR, WDFW, WA State Parks, Kittitas County, TNC

Projects:

Human Ecology Mapping
Communication Coordination
Leveraging Funding

RECREATION FORUM

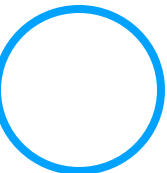
Representatives from our county's outdoor enthusiast communities who seek collaborative solutions to recreational issues facing lands open to the public.

Members: (see website!)

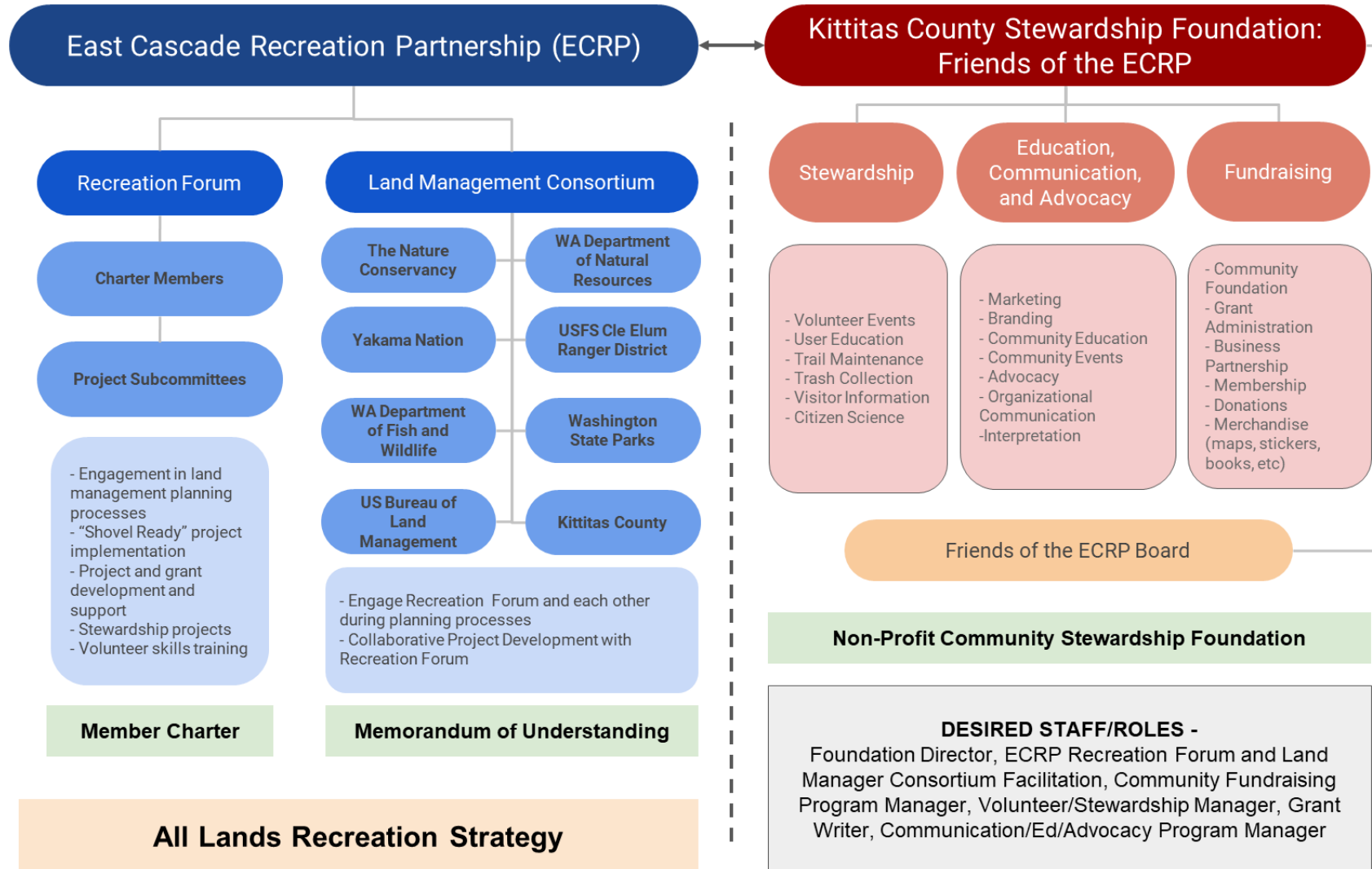
Projects:

French Cabin Creek dispersed camping
Swauk Five Fingers trail planning
Eventual volunteer coordination
Winter Recreation Videos

KITTITAS STEWARDSHIP FOUNDATION BORN FROM THIS



KITTITAS STEWARDSHIP FOUNDATION






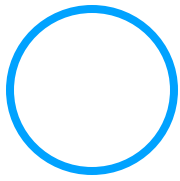
CHECKERBOARD PARTNERSHIP



Goal: A group of individuals, organizations, and government entities coming together to start a conversation about the future of 27,000 acres of privately owned forest in the Central Cascades.

Authority: Currently facilitated by TNC (land manager)

Active Projects:

- Community interest and value survey
 - Ongoing community engagement efforts
 - Pursuing grants to transfer ownership from TNC
 - \$25 mil in applications submitted 2020
 - Establishing Entity to assume ownership
- 
- 




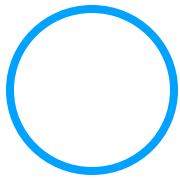
TEANAWAY COMMUNITY FOREST AC



Goal: Provides advice to DNR and WDFW about the ongoing management and recreation planning for the forest. The committee represents the interests of governments, communities, partners, and stakeholder groups reflecting the priorities of the broad cross-section of Washingtonians who cherish the forest.

Authority: DNR and WDFW

Active Projects:

- Goal 5 Outreach Subcommittee performs annual volunteer events, lobbies in Olympia, and maintains the public-facing media for the TCF
 - Campground improvements at Teaaway and Indian Camps
 - Completing Cultural Resources assessments in key project areas
 - Trail Working Group lead by WTA to develop priority trail implementation plan
- 
- 



TOWNS TO TEANAWAY

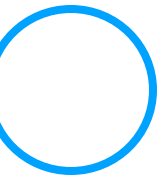


Goal: A sustainable network of nonmotorized trails connecting Upper Kittitas communities to the Teanaway Community Forest, while also tying together regional trail systems like the Coal Mines Trail, Rat Pack Trail, and Palouse to Cascade trails

Authority: An official subcommittee of KPRD1

Active Projects:

- Construction of route to ridge from each community
- Procuring easements from private landowners
- Addressing parking needs for trail system use
- Addressing weed transmission issues along trail system
- Ongoing maintenance
- Ongoing fundraising





PUBLIC LANDS ADVISORY COMMITTEE

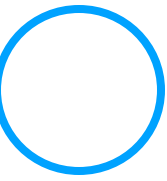


Goal: Mechanism through which appointed citizens of Kittitas County advise the Board of County Commissioners on public lands access, wildlife management, and natural resources issues.

Authority: Derives mandate from Kittitas Co., serves as County's voice on state and federal public lands concerns.

Active Projects:

- Roads and road closures
- Hunting/target shooting
- Fishing
- Stance on acquisition of public lands


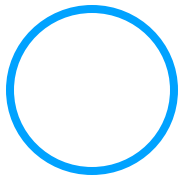


KITTITAS CO. PARKS AND REC (KPRD1)

Goal: Increase recreational opportunities in Upper Kittitas County in order to benefit the health and economic vitality of the community

Authority: Derives mandate from Kittitas Co., but no funding

Active Projects:

- T2T legal and fiscal entity
 - Snopark management
 - Winter grooming
 - Liability for rec projects
- 
- 


WHERE DO GOALS OVERLAP?

Sustainable Rec	Economic Benefit	Volunteering	Maintenance Needs	Fundraising	Education	Watershed and Forest Health
<ul style="list-style-type: none">•KPRD 1•ECRP•Checkerboard Partnership•T2T•TCFAC•I-90•CCWRC	<ul style="list-style-type: none">•KPRD 1•Checkerboard Partnership•T2T•YBIP	<ul style="list-style-type: none">•KPRD 1•ECRP RF•T2T•TCFAC	<ul style="list-style-type: none">•KPRD 1•ECRP LMC•Checkerboard Partnership•T2T•TCFAC•I-90•CCWRC	<ul style="list-style-type: none">•ECRP•Checkerboard Partnership•T2T•YBIP	<ul style="list-style-type: none">•ECRP RF•Checkerboard Partnership	<ul style="list-style-type: none">•KPRD 1•ECRP LMC•Checkerboard Partnership•T2T•TCFAC•YBIP•I-90



COMBINING NEEDS

Kittitas Stewardship Fund



501c3 Arm of
KPRD1, PDA

Oversee
certain
communal
resources, like
Tool Cache

One-stop-
Volunteer
registration
and
management

Provide
education for
and advocacy
on behalf of
Kittitas' natural
resources

Raises funds
for
stewardship,
recreation, and
conservation
projects
through VSP
and private
donations

Local grant
source for local
entities –
outdoor
schools, enviro
ngos, rec
groups, etc





ACTIONS UP NEXT:

In shaping the KSF, we need:

- Local Board Recommendations
- Legal Assistance