



The Greenway Connects It All

JULY 2018 - JUNE 2019 ANNUAL REPORT



Connected with nature, our lives are better

We are healthier and happier, and our communities are stronger, more equitable, and more economically competitive. Enhancing people's connections to nature drives our mission.

The Mountains to Sound Greenway Trust leads and inspires action to conserve and enhance the landscape from Seattle across the Cascade Mountains to Central Washington, ensuring a long-term balance between people and nature.

This vision—of the way life can be, of equal support for economic vitality and nature—is worth pursuing.

The Greenway is an NHA!

The Mountains to Sound Greenway National Heritage Area. It has a great ring to it. After more than a decade of preparation and advocacy, with support from thousands of citizens and organizations, and thanks to bipartisan support in Congress, the Greenway is now official. National Heritage Area designation affirms what we have known for a long time: that this place we call home is special. It tells a nationally significant story that merits recognition and deserves our continued care and stewardship.

No one knew that better than our founder, Jim Ellis. Jim's vision and leadership launched the Greenway, and it was wonderful that he could see the Greenway recognized in such a profound way before passing away in late 2019 at the age of 98. The values Jim exemplified and wove into the fabric of the Greenway will guide our efforts to continue his good work.

I anticipate that National Heritage Area designation will elevate our perspectives and extend the boundaries of what we see as possible in this amazing place. Through our work this year, we've continued to connect communities with public lands in the Upper Yakima Basin; enhanced safe and sustainable access to our "backyard wilderness" in the Middle Fork Snoqualmie Valley; promoted pride-of-place for natural, historical, and cultural resources in the Snoqualmie Valley; and helped the Greenway's burgeoning urban population connect with and care for nature.

Thank you for your part in making what we do and what we achieve together possible.



Jon Hoekstra
Executive Director

THANKS TO ALL OF OUR SUPPORTERS FOR MAKING THIS POSSIBLE

Our Year In Review

LANDSCAPES



401 *Acres in restoration*

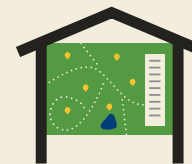


473 *Acres of new public land*



38,059 *Native trees & shrubs planted*

CONNECTIONS



50 *Miles of trail maintenance completed*



\$750K+ *Recreation improvements*

PEOPLE

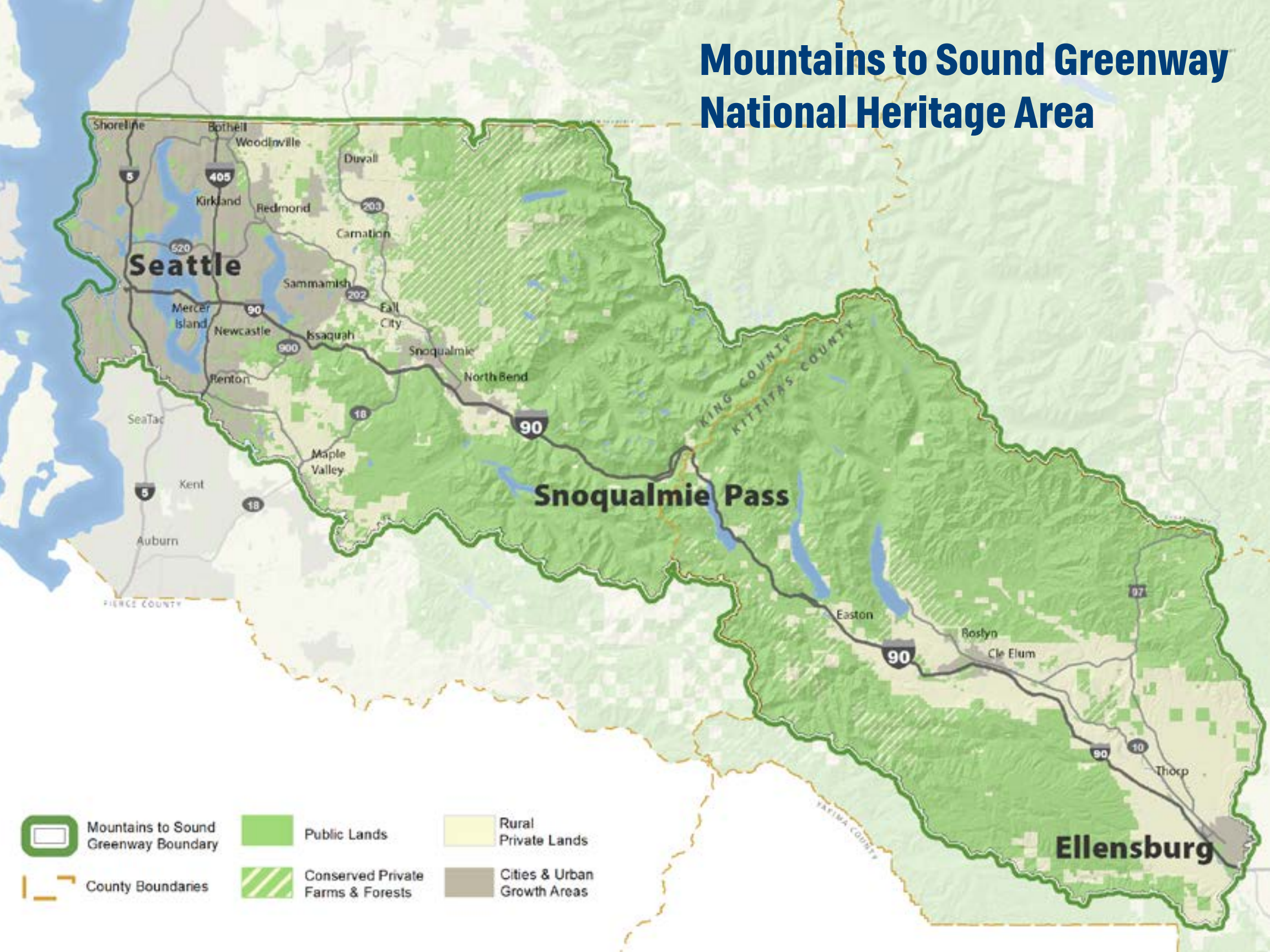


4,518
People volunteered (33% youth)



4,050
Students participated in Greenway education programs

Mountains to Sound Greenway National Heritage Area



OUR WORK

Urban Communities



Ballinger Open Space

What began as a volunteer planting event in 2018 has grown into a much larger commitment for the Greenway Trust at Ballinger Open Space in Shoreline. Located in a high-density area with limited access to green space, the 3-acre Ballinger Open Space is the backyard for many families and individuals. Unfortunately, after decades of neglect, the open space was overrun by invasive weeds and trash hiding beneath blackberry. Volunteers, along with Greenway Trust staff, crews and AmeriCorps members, have been leading the effort to restore Ballinger into a healthy forest with strong biodiversity.

Although it may seem like a typical urban forest restoration project, this project has a unique partnership with City Forest Credits to develop Carbon+ Credits that not only quantify carbon sequestration, but also calculate the value of other environmental benefits like air quality. This project is in partnership with the City of Shoreline and City Forest Credits and is funded by King County Flood Control District, The Nature Conservancy's Urban Habitat project, and pilot funding from Bank of America. The goal at the end of the 25-year project is to establish 2,000 trees on site which will help store an estimated 4,000 tons of carbon dioxide, or the equivalent of removing about 1,000 cars off the road for a full year!



Duwamish Alive! Day

The Greenway Trust partnered with the City of Seattle and ECOSS to host two events in celebration of Duwamish Alive! Day in April and October. ECOSS brought together communities from their New Arrivals Program to learn about their new local environment through environmental restoration with the Greenway at Duwamish Hill Preserve in the City of Tukwila.

Everyone learned about native and invasive plants on a native plant walk, and participated in planting a native shrub buffer at Duwamish Hill, a site sacred to the Duwamish and Coast Salish Tribes.



OUR WORK

Snoqualmie River Valley

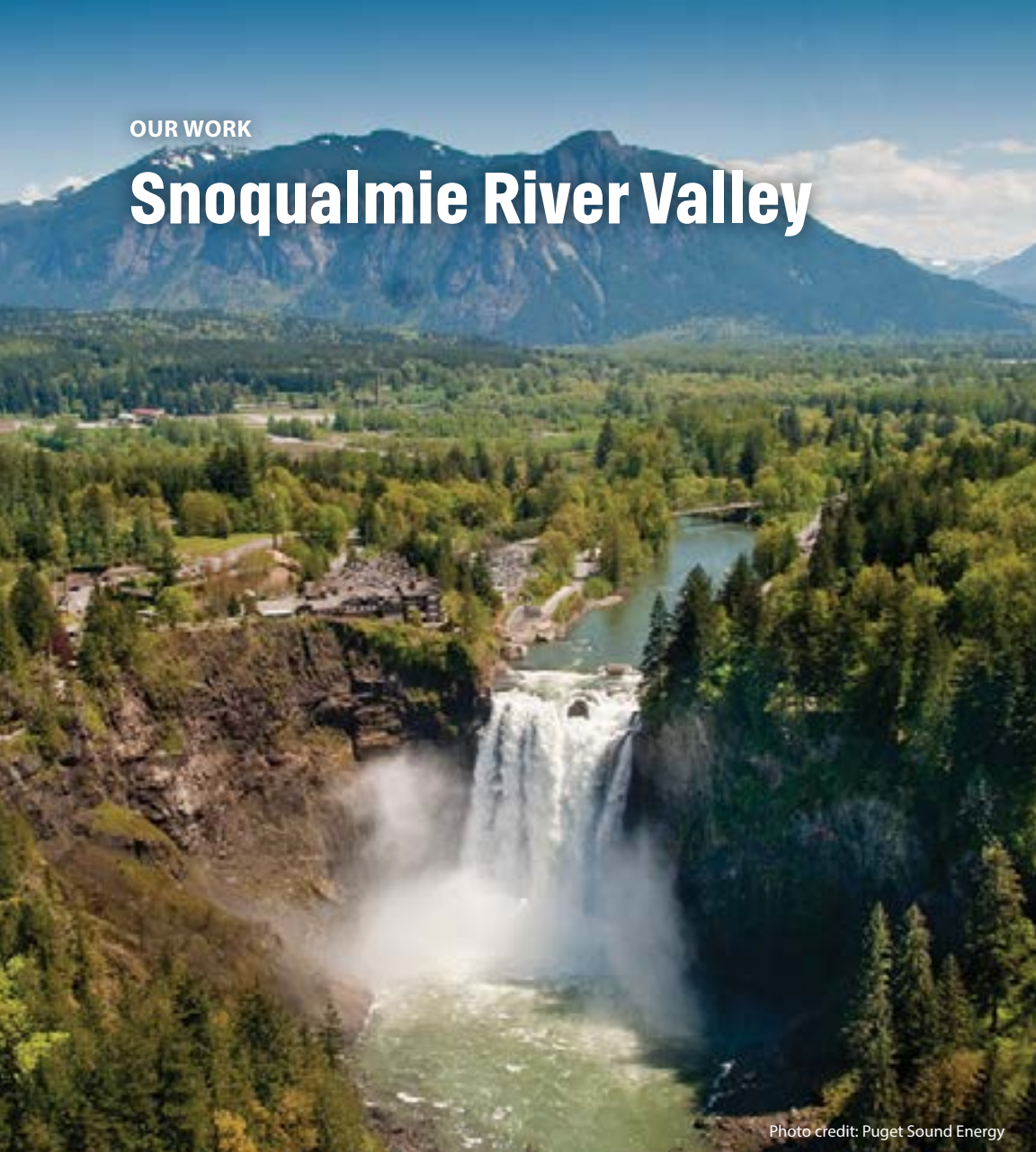


Photo credit: Puget Sound Energy

Ecological Restoration in the Snoqualmie Valley

The Greenway Trust coordinated community volunteers and professional conservation crews to restore several important open spaces in the Snoqualmie Valley. Projects included invasive plant removal and replanting with over 11,000 native trees and shrubs at Meadowbrook Farm, Sandy Cove, Kimball Creek, and Bernard Memorial Park to provide better wildlife habitat and shade along the Snoqualmie River and its tributaries. The Greenway Trust also continued a decade-long effort to control highly invasive knotweed populations along the Raging River, engaging both public and private landowners.


Savor Snoqualmie Valley

Savor Snoqualmie Valley is a cooperative effort, facilitated by the Greenway Trust, to celebrate and promote the local food and farms, arts and culture, heritage, outdoor activities, and independent businesses of the Snoqualmie Valley. Local events, activities, stories, and destinations were promoted through the Savor website, Facebook page, and suite of brochures. A series of historical downtown walking tour itineraries elevated the unique history of each community and encouraged visitation to the downtown business cores. Visit savorsnoqualmievalley.org to see what's new.

Heritage Summit

The third annual Snoqualmie Valley Heritage Summit, organized and facilitated by the Greenway Trust, brought together representatives from historical societies and other heritage groups from Duvall to North Bend to network, learn, and work towards shared projects, like outreach materials and digitization of newspaper archives. The Summit is part of the Greenway Trust's year-round work to lead a coalition of heritage groups across the Valley to share resources, spark ideas for collaborative projects, and build a Valley-wide narrative to build pride of place among residents and visitors.





OUR WORK

Middle Fork Snoqualmie Valley

Campaign Progress

The Greenway Trust continues to lead a coalition of partner organizations working toward a sustainable balance between recreation and healthy ecological conditions in the beautiful Middle Fork Snoqualmie River Valley. After three years, the Middle Fork campaign has raised more than \$8 million in funding to develop sustainable infrastructure, access, and ongoing maintenance and operations in the Valley. It is thrilling to see the public and private sectors coming together to invest in the future of this priceless community asset.

Middle Fork Gateway Bridge Redecking

Construction of the Gateway Bridge symbolized the spirit of collaboration surrounding the Middle Fork Snoqualmie River Valley. Twenty-five years ago, a group of dedicated volunteers worked with the USDA Forest Service and spent weeks in the once-lawless Valley. They carted supplies, camped out to guard bridge building materials, and risked stray bullets until a tricky helicopter lift finally put this iconic bridge in place. This year, many more people and organizations came together to replace its aging wooden deck. Backcountry Horsemen of Washington raised funds, TRM Mill provided lumber at a discounted rate, and volunteers spent many days taking care of this iconic structure so it can continue to carry hikers, horseback riders, mountain bikers, and picnickers over this Wild and Scenic River.



Photo credit: Kimberly Schmeling

New Recreational Sites and Facilities

Trails, river-access sites, signage, and sanitation facilities are all essential to directing and absorbing heavy recreational activity and preserving the long-term quality of the Valley's wild expanse. This year, we completed the family-friendly, 1.5-mile Oxbow Loop Trail, constructed in partnership with the state Department of Natural Resources along the Middle Fork Snoqualmie River and past an oxbow lake. This new trail easily connects people to nature in a spectacular place, with future plans for educational and interpretive features. Since the start of the Middle Fork Campaign, we have also increased publicly accessible toilets from two to 11.

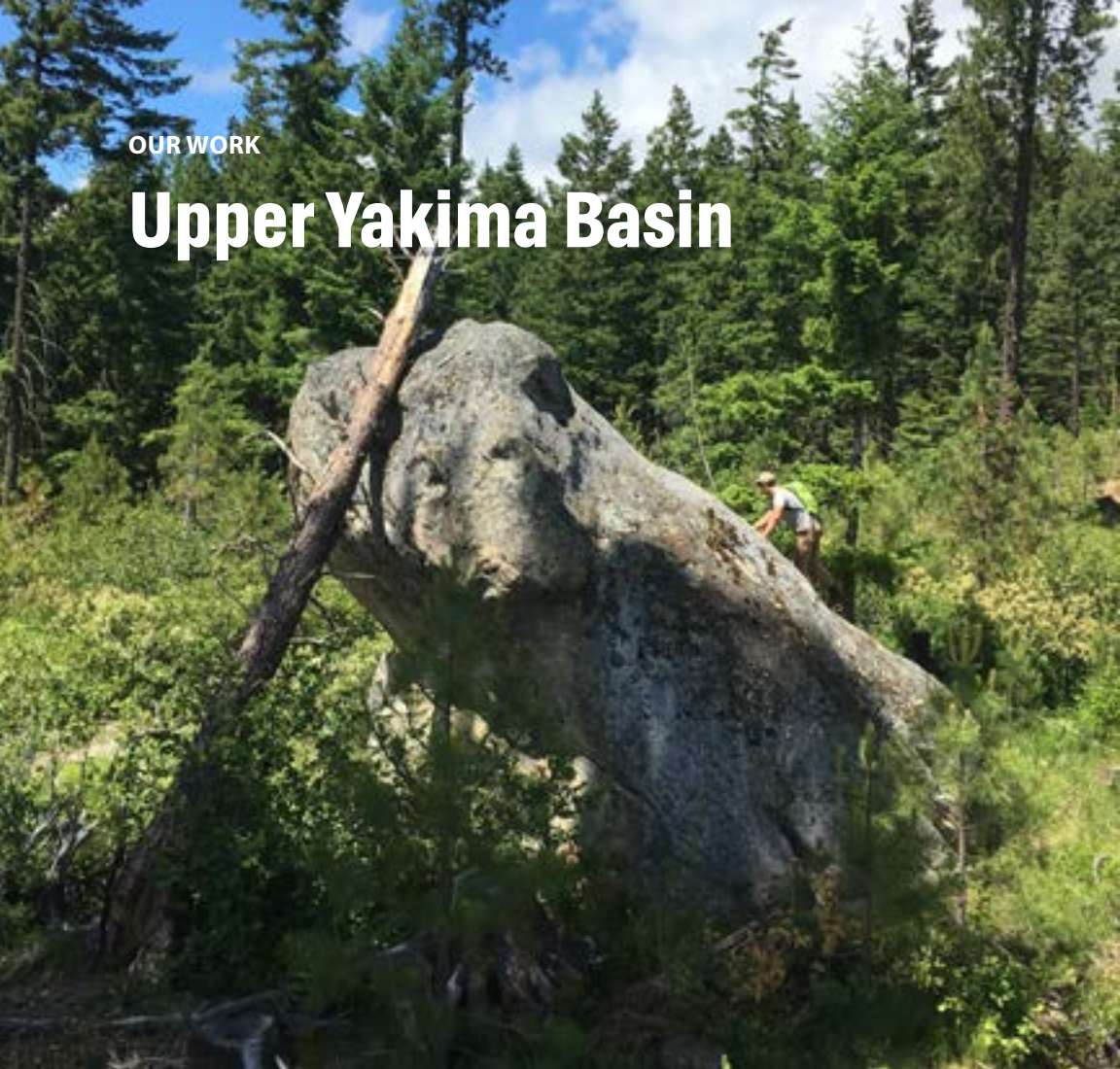
National Public Lands Day Celebration

This year on National Public Lands Day, more than 150 people joined the Greenway Trust and our partners in the Middle Fork Snoqualmie Valley to celebrate ongoing stewardship efforts and implement six new projects. From constructing new picnic tables, to enhancing native habitat, and nearing completion of the new Garfield Ledges trail, the energy and dedication from our volunteers could be felt throughout the Middle Fork Valley on this incredible day of stewardship.



OUR WORK

Upper Yakima Basin



New Teanaway Community Forest Recreation Plan

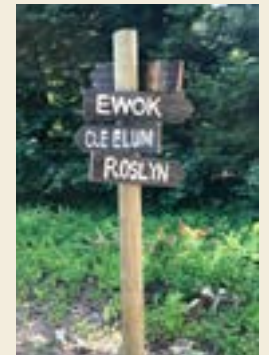
The Teanaway Community Forest Advisory Committee provides advice to the Washington State Department of Natural Resources (DNR) and Department of Fish and Wildlife (WDFW) about the ongoing management and recreation planning for the forest. The committee represents the interests of governments, communities, partners, and stakeholder groups reflecting the priorities of the broad cross-section of Washingtonians who cherish the forest. In December 2018, the agencies and advisory committee completed the Teanaway Community Forest Recreation Plan to serve as a supplement to the Teanaway Community Forest Management Plan. Now, the Teanaway is entering into a 15-year implementation phase guided by the plan.

During the summer of 2019, the Greenway Trust partnered with DNR to expand volunteer opportunities in the Teanaway by hosting the 3rd Annual Teanaway Work Party. Volunteers erected a mile of fencing to prevent cattle from crossing out of grazing pastures and into sensitive restoration areas.



Towns to Teanaway Trail Progress

In October 2018, the Mountains to Sound Greenway Trust, The Nature Conservancy (TNC), Washington Trails Association (WTA), Kittitas County Parks and Recreation District, and REI Co-op came together in the largest-ever trail building event to take place in the Greenway! More than 300 REI executives and store managers turned out to build 2.3 miles of trail from the border of the Roslyn Urban Forest to the top of the Cle Elum Ridge. The “Ewok” trail is the first completed piece of the recently designed Towns to Teanaway trail system. REI funded excavation work to rough in the trail line as well as the hand tools needed for 300+ of their staff to do the finishing work. WTA flagged the trail line and provided expert crew leads, and the Greenway Trust oversaw event logistics, tool acquisitions, and coordination with REI.



In Spring of 2019, The Kittitas Chapter of the Evergreen Mountain Bike Alliance offered to help fund design and construction of a downhill bike trail that would complete the Ewok loop into the town of Ronald. The Kittitas EMBA chapter, Greenway staff, and local businesses partnered to develop grant applications and events to benefit the project. They successfully collected the resources and volunteer manpower to complete 2.25 miles of bike trail, as well as 3 miles of a multi-use trail for hikers, equestrians, and other users.

Human Ecology Mapping

Kittitas County has become the site of a unique cross-boundary model of recreation management. Known as the East Cascade Recreation Partnership (ECRP), it is made up of federal, state, and county land management agencies, private landowners, and recreation groups, all seeking to design regional recreation systems and better coordinate their limited resources. The Greenway Trust facilitates the partnership, and created a position during 2018-2019 to conduct a survey assessment of recreational patterns across the eastern Cascades to inform future work.

OUR WORK

National Heritage Area Designation

“The Mountains to Sound Greenway is a treasure in our midst, with history dating back to the well-worn path of the first Americans—inland tribes trading with their coastal neighbors over Snoqualmie Pass.”

– Sally Jewell, former U.S. Secretary of the Interior & Founding Member of the Greenway Trust Board

Local Pride & Joy is a National Treasure

After eight years of tireless advocacy, the Mountains to Sound Greenway was designated a National Heritage Area (NHA) on March 12, 2019!

We proudly join 54 other NHA sites in 32 states, including iconic and historic landscapes such as New York’s Niagara Falls, Mississippi’s Gulf Coast, and North Carolina’s Blue Ridge. Through public-private partnerships, NHAs support historic preservation, natural resource conservation, recreation, heritage tourism, and educational projects. Leveraging funds and long-term support for projects, these partnerships foster pride of place and an enduring stewardship ethic.

Next Steps

As the named coordinating entity, the Greenway Trust aspires to reach every community and every corner of the 1.5 million acre landscape to engage an inclusive coalition of people as stewards of their public lands, trails, natural resources, and cultural heritage. The overarching care for the Greenway, the people who live here, and the connections between them, is the driver of the NHA vision to inspire action to protect and enhance this place we all love.

Thank you to our partners and every one of you who supported us over the years. It is because of all of you that the Greenway will be conserved for future generations, connecting our residents and visitors with the diverse people, landscapes, and stories of this region.



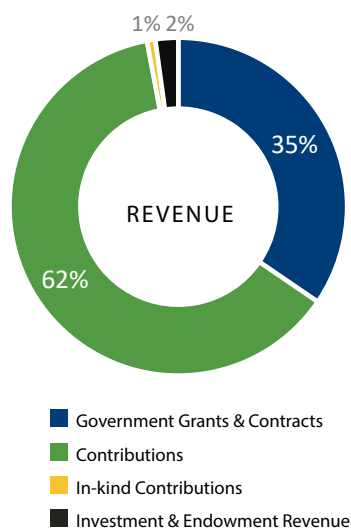
Photo credit: Ray Lapine

A few of the faces behind the NHA designation

Financial Report

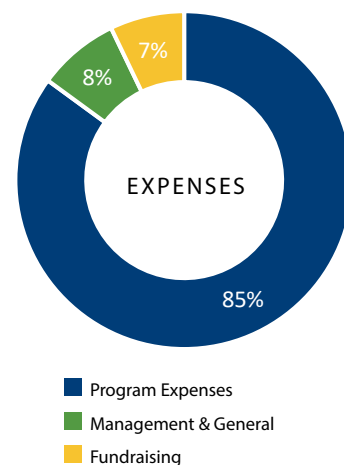
REVENUE

Government Grants & Contracts	\$1,302,136
Contributions	\$2,356,924
In-kind Contributions	\$30,119
Investment & Endowment Revenue	\$82,182
TOTAL REVENUE	\$3,771,361



EXPENSES

Program Expenses	\$2,680,204
Management & General	\$246,592
Fundraising	\$224,777
TOTAL EXPENSES	\$3,151,573
NET ASSETS - BEGINNING OF YEAR	\$2,986,816
NET ASSETS - END OF YEAR	\$3,606,604
CHANGE IN NET ASSETS*	\$619,788



*Restricted Middle Fork, project restricted, and pledged in-kind

Board of Directors

PRESIDENT

Tod McDonald *
Co-Founder, Valid8 Financial

PRESIDENT-ELECT

Doug McClelland *
Former Assistant Region Manager, Washington State Department of Natural Resources

FOUNDING PRESIDENT

Jim Ellis
Chairman Emeritus, Washington State Convention Center

SECRETARY

Josh M. Lipsky*
Partner, Cascadia Law Group PLLC

TREASURER & OPERATIONS

COMMITTEE CHAIR
Jason Broenneke *
Partner, KPMG

FUNDRAISING COMMITTEE CHAIR

Ken Krivanec *
President, Quadrant Homes

BOARD ENGAGEMENT

COMMITTEE CHAIR
Marie Quasius *
Senior Port Counsel, Port of Seattle

PROGRAM COMMITTEE CHAIR

Cora Johnson *
Geotechnical Engineer, GeoEngineers

EXECUTIVE DIRECTOR

Jon Hoekstra *
Mountains to Sound Greenway Trust

Erin Anderson

Partner, Van Ness Feldman LLP

Eric Artz

President and CEO, REI Co-op

Sally Bagshaw

Councilmember, District 7, City of Seattle

Jim Becker

Retired, Founder, SmartLab Toys and becker&mayer!

Laurie Benson*

South Puget Sound Assistant Region Manager for Conservation, Recreation, and Transactions, Washington State Department of Natural Resources

Gary Berndt

Wildland Fire Liaison, Washington State Department of Natural Resources

Mark Boyar *

President, Middle Fork Outdoor Recreation Coalition

Kevin Brown

King County Parks & Recreation

Susan Carlson

Board Chair, E3 Washington

Bill Chapman *

Past President, Mountains to Sound Greenway Trust

Dow Constantine*

King County Executive

Kitty Craig

Deputy Director, Washington Program, The Wilderness Society

Karl Forsgaard

Manager of Implementations, Thomson Reuters; Alpine Lakes Protection Society

Kurt Fraese *

Fraese and Associates, LLC

Hilary Franz*

Commissioner of Public Lands, Washington State Department of Natural Resources

Ava Frisinger

Former Mayor, City of Issaquah

Kari Glover

Retired, Global Integration Partner, K&L Gates

Don Hoch*

Director, Washington State Parks & Recreation Commission

Laura Hoffman

Owner, Copper Ridge Farm; Senior Director, Microsoft

Angela Jin

Community Wrangler, Automattic, Inc.

Andrew Kenefick

Senior Legal Counsel, Waste Management of Washington, Inc.

Jamie Kingsbury*

Supervisor, USFS Mt. Baker-Snoqualmie National Forest

Janet N. Knox

President & Principal Environmental Geochemist, Pacific Groundwater Group

Ken Konigsmark

Issaquah Alps Trails Club

Yvonne Kraus

Executive Director, Evergreen Mountain Bike Alliance

Danny Levine

President, NationAd Communications

Sharon Linton *

Marketing Consultant, SL Connects

Lorna Luebbe

Assistant General Counsel/ Director Environment Program Services, Puget Sound Energy

Elizabeth Lunney *

Former Greenway Trust Interim Executive Director

Robert Manelski

Senior Director, 787 Program, The Boeing Company

Gordon McHenry, Jr. *

President & CEO, United Way of King County

Roger Millar*

Secretary of Transportation, Washington State Department of Transportation

Chad Nesland

Director, Microsoft Procurement

Mary Norton

Meadowbrook Farm Preservation Association

Thomas O'Keefe

Pacific NW Stewardship Director, American Whitewater

Julie Parrish

Associate Dean of Academic Affairs, College of Environment, University of Washington

David Patton

Northwest Area Director, The Trust for Public Land

Kizz Prusia

Project Associate, Triangle Associates

Charles Raines

Director Cascade Checkerboard Project, Sierra Club

Janet Ray

Former Assistant Vice President, Corporate Affairs & Publishing, AAA Washington

Jim Reinhardsen *

President, Laird Norton Properties

Floyd Rogers

Environmental Advocate

Vik Sahney

The Mountaineers; American Alpine Club

Jill Simmons

Executive Director, Washington Trails Association

Al Smith

Partner, Perkins Coie LLP

David Sturtevant

Retired, Vice President, CH2M Hill

Maryanne Tagney

Community at Large Representative

Chris Thomas

Senior Vice President, Government Market Head, Property & Buildings Sector, WSP USA

Harry Thomas

Chief Marketing Officer, AAA Washington

Leah Tivoli

Manager, City of Seattle

Kathy Williams

Former Senior Vice President, HomeStreet Bank

Mike Williams

Supervisor, USFS, Okanogan-Wenatchee National Forest

Joel Yoker

Principal Program Manager, Microsoft;- Snoqualmie Valley Youth Activities and Community Center

* Executive Committee Member
* Ex-Officio (non-voting) Director

DIRECTORS THROUGH
JUNE 2019



Board of Advisors

Claudia Balducci
Councilmember, District 6, King County Council

Jim Berry
Community at Large Representative, Sammamish

Steve Brand
Partnerships and Planning Program Manager, Washington State Parks

Michelle Capp
Cle Elum District Ranger, USFS, Okanogan-Wenatchee National Forest

Will Castillo
Principal, GGL0

John Chelminiak
Mayor, City of Bellevue

Alan Coburn
President and CEO, Green Trails Maps

Jim DeVere
Mayor, City of South Cle Elum

Jan Drago
Former Councilmember, City of Seattle

Reagan Dunn
Councilmember, District 9, King County Council

Dr. Eric Friedman
Emergency Medicine Physician, Overlake Hospital

Leonard Garfield
Executive Director, Museum of History & Industry

Tom Gibbs
Former Vice President, CH2M

Paul Graves
Former Washington State Representative, 5th District (R)

Kenneth Hearing
Mayor, City of North Bend

Ron Judd
External Affairs Director, WA State Department of Transportation

Jeanne Kohl-Welles
Councilmember, District 4, King County Council

Leon Kos
Retired, City Administrator, City of Issaquah

Trevor Kostanich
Councilmember, Position 3, City of North Bend

Kathy Lambert
Councilmember, District 3, King County Council

Matt Larson
Mayor, City of Snoqualmie

Arlene Levy
Partner, Social Venture Partners

Mike Livingston
Regional Director, Washington Department of Fish & Wildlife

Christie Malchow
Mayor, City of Sammamish

Joe McDermott
Councilmember, District 8, King County Council

Dan McDonald
Former State Senator; Principal Engineer, MWH Americas

Jay McGowan
Mayor, City of Cle Elum

Sue McLain
Retired, Senior Vice President Delivery, Operations, Puget Sound Energy

Julie Meredith
Program Administrator, WSDOT Northwest Region

Mark Mullet
Washington State Senator, 5th District (D)

Obie O'Brien
Kittitas County Commissioner, District 3

Laura Osiadacz
Kittitas County Commissioner, District 2

Mary Lou Pauly
Mayor, City of Issaquah

Larry Phillips
Former Councilmember, District 4, King County Council

Martie Schramm
Snoqualmie District Ranger, USFS Mt. Baker Snoqualmie National Forest

Ron Sher
CEO, Sher Partners

Peter Spiro
Retired, Technical Fellow, Microsoft

Julie Stangell
Consulting Forester and Environmental Auditor

Ian Sutton
Attorney, Summit Law Group

Todd Trepanier
Regional Administrator, WSDOT South Central Region

Kurt Triplett
City Manager, City of Kirkland

Jason Walker
Former Councilmember, Position 7, City of Duval

Glenn Wallace
President, King County Search and Rescue

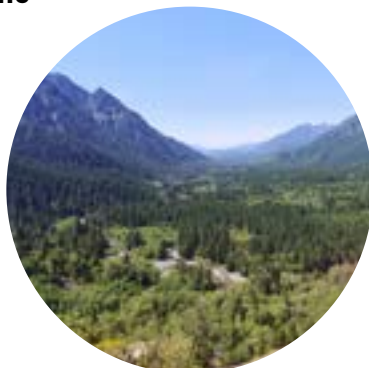
Todd Welker
SE Region Manager, Washington State Department of Natural Resources

Dan Youmans
Former Regional Vice President, External Affairs, AT&T

ADVISORS THROUGH
JUNE 2019

“One of the special treasures of our part of the country is the natural beauty and opportunities for exploration, especially in the I-90 corridor. We take this for granted, but 30 years ago it was in danger of being developed. Thanks to the Mountains to Sound Greenway Trust, we have it to enjoy today and for future generations.”

- Kathy Williams, Greenway Visionary



Thank You, Donors

The Greenway Trust gratefully acknowledges the individuals, businesses, and foundations that generously support our work across the Mountains to Sound Greenway.

MIDDLE FORK SNOQUALMIE CAMPAIGN

The Middle Fork Snoqualmie campaign seeks to chart a sustainable future for the Middle Fork Valley through enhanced recreational infrastructure, cooperative management, and volunteer stewardship. Donors have broken new ground in this effort by bringing philanthropy to bolster dwindling public funds. With their help, the Greenway Trust and agency partners are creating the facilities needed to accommodate rising usage of this incredible wilderness just minutes from the busy Puget Sound metro.

\$1,000,000+
REI Co-op

\$500,000 - \$999,000
The Boeing Company

\$100,000 - \$499,999
The Nordcliffe Foundation
Wyncote Foundation Northwest
Greg & Monica Smith
Treeline Foundation
Waste Management Association
Maggie Walker

\$20,000 - \$99,999
National Forest Foundation
Fred R. Smith Foundation
Peach Foundation
Ron and Eva Sher
Brogan Thomsen
Allan and Inger Osberg

\$10,000 - 19,999
Valley Camp
Anonymous
Arlene Levy
Jones & Jones Architects

Mark Boyar and Gretchen Weitkamp
Thomsen Family
Vikram and Jessica Sahney

\$2,500 - 9,999
National Environmental Education Foundation
Candace Smith and Steve Bolliger
Alpine Lakes Protection Society
Cascade Gateway Foundation
David and Sue Sturtevant
Eric and Katie Artz

Floyd and Judy Rogers
HEARTLAND LLC
Issaquah Alps Trails Club
Jim and Bonnie Reinhardtsen
Kurt and Roberta Fraese
Charles Fleming and Deborah Klein
Green Trails Maps

GREENWAY VISIONARIES

\$25,000+
Anonymous
Doug and Kristi McClelland
Greg & Monica Smith
The Ted and Gretchen Thomsen Family

\$10,000-\$24,999
Eric & Katie Artz
Marjorie Boettler Estate
Jim Ellis
Arlene Levy
Inger Osberg
Jon Hoekstra and Jennifer Steele
Jerry Stritzke
Maryanne Tagney and David Jones
Walker Family Foundation
Kathy Williams

\$5,000-\$9,999
Anonymous
Jim and Barbara Becker
Mark Boyar and Gretchen Weitkamp
Fred and Joan Burnstead
Kurt and Roberta Fraese

Jeffrey and Eleanor Freeman
Tom and Jean Gibbs
Kari Glover and Thaddas Alston
Jim and Bonnie Reinhardtsen
Ron and Eva Sher
Brogan Thomsen
Robert Wiley

GUARDIANS OF THE GREENWAY

\$2,500-\$4,999
Candace Smith and Steve Bolliger
Betty Bottler
Susan and Eric Carlson
Bill and Frankie Chapman
Matthew and Michelle Grimm
Lynn Hubbard and David Zapsky
Andrew and Polly Kenefick
Bob and Deanna Manelski
Sue McLain and Steve Persing
Jens Molbak
John and Harriett Morton
Debby and Brian Peterman
Vikram and Jessica Sahney
Matt and Jennie Shaw

Al Smith and Barb Potashnick
John and Jennifer Spaitth
Peter and April Spiro
Webb Thomsen
Carol Weisbecker and Michael Ernst
Joel and Wendy Yoker

\$1,000-\$2,499
Alan and Cheryl Ameche
Heather Andersen and Mike Cowden
Erin Anderson and Adam Torem
Bangs Family Fund
Tom Bayley
Alan Black
Michael and Debra Bresko
Amy and Andreas Brockhaus
Jason and Liz Broenneke
Stephen Brown and Sarah Battersby
William Castillo and Beth Dwyer
Ted and Patricia Collins Charitable Trust
Stacey Crawshaw-Lewis
Jennifer and Chuck Creveling
Todd DuChene
Stephanie Dunlap
John Ellis
Kim and Scott Fancher

Susanne Forderer
Alden Garrett
Vanessa Gemmell
Todd and Rhonda Glass
Laura Hoffman and John Burry
Patsy Huntington and John Gove
Karen Hust and Todd Vogel
Andrew Jacobson
Judy Jesiolowski and David Thompson
Sally and Warren Jewell
Mike and Peggy Kanaga
Janet Knox and Tom Fehsenfeld
Casey Kramer
Ken and Kay Krivanec
Walter Kuciej
Russ Levy
Dr. Jerry and Marguerite Lewis
Sharon and Bill Linton and Family
Nancy Lomneth and Mark Boyd
Gordon McHenry, Jr and Dorina Calderon-McHenry
Mark McPherson and Brandith Irwin
Lee Mullin
Chad and Wendy Nesland
Mary Norton and Joe McElroy
Joanie Parsons

Matthew Perkins
Don and Susan Phillips
Bryce Phillips
Terry Pottmeyer and Geoff
Trowbridge
Marie Quasius and Paul Fischer
Mark Rieder
Floyd and Judy Rogers
Gary Rygmyr
Steve Schepman
Lauren and John Schiltz
Miya Schneider and Sam Birch
Charles and Leeta Scott
Meredith and Craig Shank
Alice and Dave Shorett
Emer Dooley and Rob Short
Stuart and Patricia Spencer
Arriba Statute
Jane and Alec Stevens
David and Sue Sturtevant
John Teutsch
Harry Thomas
Mikal and Lynn Thomsen
Marisa and Terry Tychon
Don and Judy Willott
Gary Young
Danny Levine and Catherine
Zimmerman

\$500-\$999

Anonymous
Joshua Anderson and
Katherine Alberg Anderson
Cody Arledge
Jennifer Beatty
Laurie Benson and Ondrej
Sklénar
Inez Noble Black
Black Family Foundation
John and Maria Bliss
Terri Bookwalter
Devon Butler
Hugh and Nicole Chang
Stacy Chevalier Jones and
Bryan Jones
William Chin
Bryan Cohen
Dale Cole
Julie Colehour
Darcy and Trent Dawson
Heidi De Laubenfels
Elizabeth Dennis
John and Julie Duggan
Lynn and Mark Erickson
Jenna and Jonathan Erney
Mary Evans and Steven Maggi
Debra and Andrew Fitzpatrick
Ava and Bill Frisinger
David Fujimoto
Tracy Garland
Susan and Robert Gellatly
Rochelle Goffe

Slade Gorton
Alejandro Grajal and Helena
Puche
David Gruenewald and
Marlene Stutzman
Renee and Ken Haniu
Marsha Hanson
Josh and Jamie Harris
Jerry and Linda Henry
David Jenkins
Deborah Jensen and Steve
Malloch
Greg Johnson and Natanya
Bednarski
Cora and Brian Johnson
Judy Kalb
Paul Kistner
Ken Konigsmark
Brynne and Ryan Koscianski
Kristi Kosmata
Trevor Kostanich and Emily
Larson
Yvonne Kraus and Brian
McNaboe
Quentin Kuhrau
Marjorie Levar
Josh Lipsky and Laura van
Dermoot Lipsky
Lorna Luebbe
Fred Lunke
Elizabeth Lunney
Peter and Linda Machno
Susan MacRae and Shelly
Nance
Alex and Cynthia Malesis
Jeff and Eve Martine
Bob and Susan Mecklenburg
Jayme Money
Henry Mustin and Laura
Lippman
Irena Netik
Paul Neutz and Nicole Burnett
Ryan Newell
Margaret Newsom
Eric Norelius
Lois North
Thomas O'Keefe
Ben Packard
Sachin and Suyash Panwalkar
Wendy Parslow
Sam Patton
Tom Pozarycki
Janet and Terry Ray
Steven Rogers and Shelly Hall
Jim and Marcia Rupert
Paul Schmitt
Lori Seabright
Steven Seward
Tim and Sasha Shaw
Riley and Donna Shirey
Jill Simmons

Julie Stangell and George
Bennett
Dan Stonington
Elizabeth Thomas
Keehn Thomsen
Monty and Lori VanderBilt
Edward Vervoort
Scott and Marion Vokey
Doug and Stacey Waddell
Bill and Audrey Weitkamp
George and Bonnie Zinn
Tjaard and Gabriele Zwaagstra

\$250-\$499

Anonymous
Anonymous
Jessica and Justin Adair
Karen Anderson
Steve and Sharon Anderson
Hiddy Awwad and Ziad Khalidi
Sally Bagshaw
Sonia and Kendall Baker
Virginia Barney
Jake Bartholomy and Justin
Goodman
Douglas and Maria Bayer
Foundation
James and Bobbi Benson
Jim Berry
George Borle
David Bowermaster and Annie
Livingston
Jennifer and Christopher
Brenes
Henry Brown
Lisa and Bob Brudvik
Allison Capen and Mark
Iverson
Patricia Carroll
Scott Chamberlin and Kierstin
Swanson
Helen Cherullo
Lesley Chin
Lynn Claudon
David Clemens
Trisa Clemons
Alan and Gail Coburn
Bob and Muffie Cohen
Marisa D'Angeli and Thomas
Brogan
Deloa Dalby
Karen Daubert and Jared
Smith
Karen Deal
Patricia Devereux
Mackenzie Dolstad and Dr.
McFarland
Richard and Martha Draves
Betty Drumheller
Riley and Donna Shirey
Jill Simmons

Jessica Emerson and Evan
Buehler
Jean Ferry
Barbara and Tim Fielden
Mary Fields
John Floberg and Lisa
Bellefond
Michael Ford
Karl and Mary Forsgaard
Jon and Cynthia Franklin
Penny and Paul Fredlund
Robin Freedman
Susan and Albert Fuchs
Craig Gannett
Hayley and Casey Goelzer
Mike Goldade
Steven Grot
Gabe Grant
Shep Griswold
Don Hachel
Linda Harer
David Harrison
Orin Hasson and Deva Dawson
Donald Hoekstra
The Inks Family
Angela Jin and Dane Odekirk
Mike Jonson
Rep. Ruth Kagi
David Kappeler and Ann
Fletcher
Robert and Sarah Kettle
Margaret Kilbourne-Brook
Jamie Kingsbury
Brian and Ginger Knox
Hanuma Kodavalla
Leon and Kathryn Kos
Richard Lander
Susan Langsley and William
Adams
Terry Lavender
Michael Lazarus
Mara Lemagie
Steve Lewis
David Lomet
Elise Lufkin
The Luna Family
Gretchen Luxenberg and Leigh
Smith
Alfred and Peggy MacRae
Lindsay Malone and Gabriel
Deal
Hilary and Ryan McDevitt
Kevin McDonald
Dan and Janie McDonald
Dr. Roberta and Robert
McFarland
Rick McGuire
Carolyn McKenna
Renate McVittie
Matt and Melinda Mechler
John Milbrath

Anonymous
David Papiez
David Peterson
Lynn Phillips
Larry Phillips
Claudia Post
Selden Prentice
Dave Rodgers
Lisa Rogers
Jim Roth and Marti McGinley
Valerie Rowe
Karen Ruppert
Joe Sambataro
Gary Sheneman
Craig and Yumi Sherman
John Sherwin
Steven and Carol Shesteg
Rupali and Rajesh Sheth
Lauren Shuck
Kristina Sigloh and Chris Allen
Jon Simmons
Gerald Smith
Paul and Tina Townsend
Christie True and Lawrence
James
Prasad Ullal
Janet and Stanley Vail
Tim and Evelyn Vinopal
Paul and Elaine Vonrosenstiel
Glenn Wallace
Bill and Nancy Way
Cynthia and Bruce Welter
Dana West
Ryan Wilhelm
Charles Wilkinson and
Melanie Ito
Ray and Judy Williams
Dan Wilson and Kathleen
Smith
Constance Wood
Ann Wyckoff
Hyung Won Yang
Dan and Sherri Youmans

Julie Miller
Brock Millien
Patrice Miner
Emily Moon
Dr. Marr Mullen
Jay Naylor
Keith Niven
Tim Noonan and Julie Conklin
Rebecca Norlander
Rayma Norton
Laura O'Hara and David
Gustafson
Yvonne and Dennis O'Leary
Peter and Laura Orser
David Papiez
David Peterson
Lynn Phillips
Larry Phillips
Claudia Post
Selden Prentice
Dave Rodgers
Lisa Rogers
Jim Roth and Marti McGinley
Valerie Rowe
Karen Ruppert
Joe Sambataro
Gary Sheneman
Craig and Yumi Sherman
John Sherwin
Steven and Carol Shesteg
Rupali and Rajesh Sheth
Lauren Shuck
Kristina Sigloh and Chris Allen
Jon Simmons
Gerald Smith
Paul and Tina Townsend
Christie True and Lawrence
James
Prasad Ullal
Janet and Stanley Vail
Tim and Evelyn Vinopal
Paul and Elaine Vonrosenstiel
Glenn Wallace
Bill and Nancy Way
Cynthia and Bruce Welter
Dana West
Ryan Wilhelm
Charles Wilkinson and
Melanie Ito
Ray and Judy Williams
Dan Wilson and Kathleen
Smith
Constance Wood
Ann Wyckoff
Hyung Won Yang
Dan and Sherri Youmans

Michael and Sonia Zwilling

\$125-\$249
Janet Adams and Joe King
Gabe Aeschliman
Thomas Anderson
Kaylene Anderson
Richard Anderson
Gilbert and Mary Jane
Anderson
Virginia Anderson
Dan Anderson
Bob Aye and Carol Hunter
Sourabh Bansal
Pauline Bariola
Oliver Bazinet
Marc and Marcy Berejka
Donna Bernard
Janet and Charlie Bird
Connie Blumen
Sarah Brandt
Barbara Braun and Curtis
Allred
Brad Brickman
Rachel Brucker and Jeffrey
Haessler
Tom and Mary Brucker
Philip Buckner
Tom Bugert
Veronica Burgess
Joan Burlingame
Sarah Cave
Barb Chamberlain
Sidney Chun
Hannah Clark
Lauren Clark
Peter Cleworth
Kenneth Colling
Michael Collins and Karen
Carlson
Michelle Connor
William Cox
Kitty Craig
Juelanne Dalzell
Mark Daniel

Bruce Danielson

Philip and Lenore Defliese
Patty and Patrick Dillon
Adam Draper
Reagan Dunn
Ian Dunn
Steve Durrant and Chris
Carlson
Will Einstein
Allan Ekberg
Valerie Ensor
Matthew Erickson
Kenny Fahey
Ben Farrow
Margaret Fern
Lloyd and Pat Fetterly
Emily Gallagher
Meital and Inbar Gazit
Bonnie and Jeffrey Geers
Don Gerend
Benjamin Gilbert
Sandra Goelzer
Jessica Goodman
Ashit Gosalia
Jen Gradisher and Kay
Sadowitz
Gordon Gray and Marie
Overturf
Phil Guess
Harumi Guiberson
Amy Gutmann
Richard Haase
Margaret Haggerty
Will Hall and Laurie Lindblad
Patrick Hand
James Hanley
Sonja Hanson and Patrick
Hurley
Grace Han Stanton
Laura Harper
Jonah Harrison and Annie
Tegen
Guy Haycock
Ed Hazen and Sue Holbink

Kelly and Andrew Heintz

Eve Henriksen
Fernando Hernandez
Quintin and Debbie Hess
Susan Hill and Eric Noreen
Don Hoch
Dianne Hoff and Jim Stiles
Jon Jensen
Maggie Johnescu
Rick Johnson and Diane Berge
Lee Johnson
Ruth Johnston
Nancy Keith
Steve and Janet Keller
Brian Kelly
Erika Kinno
Joseph Krukowski
Erik and Kristine Lange
Mynga Le
Margaret Lead
Rose LeSmith
Konrad Liegel and Karen
Atkins
Mike and Nancy Livingston
Tavish MacLean
John Mannetti
Scott and Jean Manning
Kristin Marshall
Mike and Janelle McCarty
Tod and Amy McDonald
Mary Beth McGee
Eric Schuehle
Shyla Miller
Parham Mohadjer
Kathryn Moxley
David Myre, Jr
Don Nataros
Todd and Mary Nelp
Karen Nelson
Alyssa Nessman
Ethan Newberry
Emily Newcomer
Jeff Newman
Alexander Nosov

Dr. David and Rosemary
O'Hara
Kortney Okura and Maureen
Kennedy
Gordon Orians
Ralph and Peggy Owen
Alan Painter
David Patton
Mary Lou Pauly
Eriann Pearson
Susan and Bo Peck
Regina and Mike Peckman
Bob Peters
Erik Pham
Katy Phillips
Susan Price and Scott Springer
Max and Erin Prinsen
Evan pulse
Charles Raines and Cindy
Seramur
Will Rava
Alex Rea and Akane Suzuki
Sandra Reeves
Sage Reeves
Chris Reh
Ben and Nicole Reinhardson
Karl Reinsch
Mary Rossano
Kathryn Rothberg
Minna Rudd
Eric and Tera Schreiber
Eric Schuehle
Beverley Scruton
Mike Sharpe and Elizabeth
Dunlap
John and Maureen Shaw
Virgie Sheldon
Miller Sherling and Nathan
Herring
Bruce and Jean Sillers
Mike Simms
Susan and Britt Slone
Robert Smith
Lorinda Soma

Vivek Soman
Mohamed Souzaia
Betsy Stauffer
Mike Stenger and Su Thieda
Chriss Stephens
Diane Stevens
Douglas Stewart
Joy Stewart
Mary Stratton
Stephen Streufert and Lisa
Foisy
Erica Stricker
Katie and Burleigh Surbeck
Jason Sykes
Keith Taylor
Kathryn Terry
Brenda Tincher
John Traeger
Michael Truog
Susan VanLeuven
David VanWert
Thomas Vogl
Janet Wall
Preston Walls
Bill and Ann Walters
Curt Warber
David Weber
Wendy Weiker
Elliott Weiss
Hannah Wheeler and Cooper
Cain
Mason White
Jason Wilkinson
Sue Williams
Tracy Williams
Michael Woodsum
Carla and Doug Woodworth
David Woolley-Wilson
Michiel Worries
Spencer and Erika Wutherich
Susan Yates
Asako Yoshimura
Mona Yurk
Brian Zimmer
Gary Zink

Organizational Support

\$100,000+

The Boeing Company
REI Co-op
Wyncote Foundation
Northwest

\$50,000 - \$99,999
American Forests
Carter Subaru and Volkswagen

\$20,000 - \$49,999
Bullitt Foundation
Greenvelope, LLC
Holocene Foundation
Marie and Walter Williams
Fund
The Nature Conservancy
Russell Family Foundation

\$10,000 - \$19,999

AAA Washington
Fred R. Smith Foundation
Grousemont Foundation
Microsoft Matching Gifts
Program
Potelco

\$5,000-\$9,999

Cascadia Law Group PLLC
Hugh & Jane Ferguson
Foundation
Laird Norton Foundation
National Environmental
Education Foundation
Norman Archibald Charitable
Foundation
Perkins Coie LLP
Puget Sound Energy
Quadrant Homes
Rotary Club of Seattle
Sterling Realty Organization
Treeline Foundation
Waste Management of
Washington

\$1,000 - \$4,999

4Culture
Asplundh Tree Expert
Company
Back Country Horsemen of
Washington

Back Country Horsemen of
Washington- Pierce County
Chapter
Back Country Horsemen
of Washington- Tahoma
Chapter
EarthShare of Washington
Eastside Runners
GeoEngineers, Inc.
GGLO
Google
Green Trails Maps
Harrington-Schiff Foundation
K&L Gates LLP
KPMG LLP
Liberty High School DECA
Molbak's Garden & Home
Port Blakely
Recology Cleanscapes
Thomson Reuters
Washington Trails Association
Washington Women's
Foundation
Wildlife Conservation Society

Wilson Sonsini Goodrich &
Rosati Foundation
WSP

IN-KIND SUPPORT
Annie's Art and Frame
Heartland LLC
Michael Gribble
Moonphoto
Perkins Coie LLP
REI Co-op
Ste. Michelle Wine Estates

TRIBAL, PARTNER, AND AGENCY SUPPORT

City of Carnation
City of Duvall
City of Issaquah
City of Mercer Island
City of North Bend
City of Seattle
City of Shoreline
City of Snoqualmie
City of Woodinville
King Conservation District

King County
King County Flood Control
District
Lake Washington/Cedar/
Sammamish Watershed
Mt. Baker-Snoqualmie
National Forest
National Fish and Wildlife
Foundation
Okanogan-Wenatchee
National Forest
Snoqualmie Indian Tribe
Snoqualmie Watershed Forum
Washington State Department
of Commerce
Washington State Department
of Natural Resources
Washington State Parks &
Recreation Commission
Washington State Recreation
and Conservation Office



PLANNED GIVING - THOMSEN FAMILY FELLOWSHIP FOR THE FUTURE

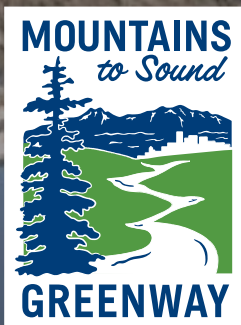
*Thank you to those who choose to make the future of the Mountains
to Sound Greenway a part of their personal legacy.*

\$781,000

Ted and Gretchen Thomsen Estate

\$13,700

Marjorie Boettger Estate



Visit mtsgreenway.org for the full version of our annual report.

2701 First Ave, Suite 240, Seattle WA 98121
206.382.5565